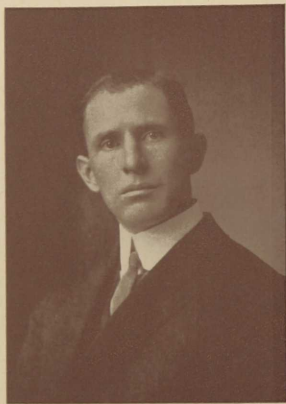




The Grist
1914

Lucy Comins Tucker



As a token of our esteem for him and his unbiased
interest shown toward our class and the college
community, we hereby respectfully dedicate
this volume to our honorary member
Prof. Leonard Verley Dickenson

THE GRIST

MDCCCCXIV

VOLUME XVII



PUBLISHED BY THE JUNIOR CLASS OF
THE RHODE ISLAND STATE COLLEGE

KINGSTON, RHODE ISLAND

1913

THE GRIST

MDCCCXIV

VOLUME XVII



PUBLISHED BY THE JUNIOR CLASS OF
THE RHODE ISLAND STATE COLLEGE

KINGSTON, RHODE ISLAND

1913



.. Prologue ..



ONCE AGAIN the supply of grain for the old Grist has run low. It has been a difficult task to keep the old wheel busy and the old miller Rhody contented. Now once more he is awaiting patiently a good harvest.

For sixteen years he has supplied his patrons faithfully with grindings and chaff, and so may he have a big harvest this year for the enrichment of the community and the happiness of all.

The planters of the seed and those who have toiled honestly to bring about a good crop have given their best to the cause. Let us judge them accordingly.

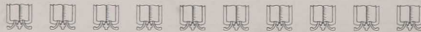


TABLE OF CONTENTS

	PAGE
THE CORPORATION	4
THE FACULTY	5
COLLEGE CALENDAR	9
THE GRIST BOARD	10
THE CLASSES	12
ATHLETICS	43
FRATERNITIES	71
ORGANIZATIONS	83
THE BATTALION	97
THE ALUMNI	105
MISCELLANEOUS	108
THE YEAR	113
GRINDINGS	125
ADVERTISEMENTS AND THE GRIST CALENDAR	131

Rhode Island State College

Corporation

HON. ROBERT S. BURLINGAME	Newport County
HON. CHARLES ESTES	Bristol County
HON. CHARLES DEAN KIMBALL	Providence County
HON. THOMAS G. MATHEWSON	Kent County
HON. B. FRANK ROBINSON	Washington County
HON. WALTER E. RANGER, State Commissioner of Schools	<i>ex-officio</i>
HON. PHILIP A. MONEY,	Member of State Board of Agriculture

Officers of the Corporation

HON. CHARLES DEAN KIMBALL, <i>President</i>	Providence
HON. WALTER E. RANGER, <i>Vice-President</i>	Providence
HON. ROBERT S. BURLINGAME, <i>Clerk and Treasurer</i>	Newport

Faculty

- HOWARD EDWARDS, A. M., LL. D. *President*
Φ K Ξ; A. M., Randolph-Macon College, 1876; Student, University of Leipzig, 1877-1878; Student in Paris, 1878; Teacher, Bethel Academy, Virginia, 1878-1800; Teacher, Bingham School, North Carolina, 1880-1882; Acting Principal of Bethel Academy, Virginia, 1882-1884; Principal, Tusculum Academy, Alabama, 1884-1885; Professor of English and Modern Languages, University of Arkansas, 1885-1890; Professor of English and Modern Languages, Michigan Agricultural College, 1890-1906; LL. D., University of Arkansas, 1891; Leave of absence in France and England, 1891-1892; Entered upon duties as President, July 1, 1906.
- HOMER JAY WHEELER, PH. D., SC. D. *Professor of Geology*
C S C; B. S.; Massachusetts Agricultural College, 1883; Assistant Chemist, Massachusetts State Experiment Station, 1883-1887; Graduate student, University of Göttingen, 1887-1889; Ph. D., Göttingen, 1889; Appointed Chemist of Rhode Island Agricultural Experiment Station and Professor of Geology, 1890; Acting President, August 15, 1902-April 1, 1903; Professor of Agricultural Chemistry, 1902-1907; Sc. D., Brown University, 1911; Resigned Directorship, Dec. 1912.
- BURT LAWS HARTWELL, PH. D. *Professor of Agricultural Chemistry*
C S C; Σ Ξ; Φ K Φ; B. S., Massachusetts Agricultural College and Boston University, 1889; M. S., Massachusetts Agricultural College, 1900; Ph. D., University of Pennsylvania, 1903; Appointed First Assistant Chemist, R. I. Experiment Station, 1891; Appointed Associate Chemist, 1903; Professor, 1908; Appointed Director, Dec. 1912.
- HARRIET LATHROP MERROW, A. M. *Professor of Botany and Secretary of the Faculty.*
B. S., Wellesley College, 1886; Teacher of Science, Plymouth High School, 1887-1888; Teacher of Science, Harcourt Place, Gambier, O., 1888-1891; Graduate student, University of Michigan, 1891-1892; A. M., Wellesley College, 1893; Graduate assistant, Botanical Laboratory, University of Michigan, 1893-1894; Appointed Professor of Botany, January, 1895.
- VIRGIL LOUIS LEIGHTON, PH. D. *Professor of Chemistry*
Δ T Δ; Φ B K; A. B., Tufts College, 1894; A. M., Kansas State University, 1895; Ph. D., Tufts College, 1897; Instructor in Organic Chemistry, Tufts College, 1897-1901; Appointed Associate Professor of Chemistry, 1901; Professor, 1903.
- JOHN BARLOW, A. M. *Professor of Zoology*
Δ T; Φ B K; B. S., Middlebury, 1895; A. M., Brown University, 1896; Assistant Biologist, R. I. Experiment Station, 1898; Professor of Biology, Fairmount College, 1898-1901; Appointed Professor of Zoology, 1901.
- MARSHALL HENRY TYLER, B. S. *Professor of Mathematics*
Θ Δ X; B. S., Amherst College, 1897; Instructor at St. Mark's 1897-1898; Appointed Master of the Preparatory School, 1898; Professor of Mathematics, 1906.
- GEORGE EDWARD ADAMS, B. S. *Professor of Agriculture*
B. S., R. I. College of Agriculture and Mechanic Arts, 1894; Student, Cornell University, 1897 and 1899-1901; Assistant in Horticulture, Rhode Island Experiment Station, 1895-1901; Assistant Agriculturist, Rhode Island Experiment Station, 1901-1906; Associate, Agronomy, 1906; State Statistical Agent, U. S. Department of Agriculture, 1901; Appointed Professor of Agriculture, 1907.

- ANDREW EDWARD STENE, M. S. *Superintendent of College Extension*
 B. S., University of Minnesota, 1897; Principal of Schools, Ashby (Minn.), 1897-1901; M. S., Cornell University, 1902; Appointed Assistant in Horticulture, 1903; Appointed Assistant of Extension, 1904.
- SAMUEL HARVEY WEBSTER, B. S. *Professor of Civil Engineering*
 A. B., Waynesboro College, Pa., 1893; Instructor, Jackson High School, Michigan, 1894-1896; Instructor, Washington State College, 1896-1903; Student, Leland Stanford University, 1903-1904; B. S., University of Illinois, 1906; Assistant Professor of Civil Engineering, Oklahoma State College, 1907; Appointed Professor of Civil Engineering, 1907.
- ROYAL LINFIELD WALES, B. S. *Professor of Mechanical Engineering*
 B. S., Massachusetts Institute of Technology, 1902; Instructor, Massachusetts Institute of Technology, 1902-1904; Instructor in Mechanical Engineering, State College of North Carolina, 1904-1905; Assistant Professor of Experimental Engineering, University of Tennessee, 1905-1908; Appointed Professor of Mechanical Engineering, 1908.
- LESTER WELLS BOARDMAN, A. M.
 A. B., Brown University, A. B., 1899; A. M., 1902; Graduate Student in English, University of Chicago, 1899-1900; Teacher of English, Cook Academy, Montone Falls, N. Y., 1900-1901; Teacher of English, The University School, Providence, R. I., 1901-1904; Graduate Student, Teacher's College, Columbia University, Summer Sessions of 1905-1906; Teacher of English, Baltimore City College, Baltimore, Md., 1904-1909; Head of Department of English, 1909-1912; Professor of Literature and Education and Head of the English Department at Rhode Island State College, 1912; Member of National Educational Association.
- LEONARD PERLEY DICKINSON, B. S. *Professor of Physics and Electrical Engineering.*
 A. B., B. S., Massachusetts Institute of Technology, 1896; With American Telephone and Telegraph Co., 1896; Instructor in Electrical Engineering, University of Maine, 1898; Instructor in Electrical Engineering, Massachusetts Institute of Technology, 1899; Assistant Professor of Electrical Engineering, Lafayette College, 1903; Appointed Professor of Physics and Electrical Engineering, 1909.
- HERMAN CHURCHILL, A. B., A. M.
 B. S., Syracuse University, A. B., 1894; Summer Sessions, Chautauqua, N. Y., Chicago University, University of Wisconsin; University of Wisconsin A. M., 1902; Instructor of English in Academic schools, 1894-1903; English Department, Northwestern University, Evanston, Ill., 1903-1907; Head of English Department, Southwestern College, Winfield, Kan., 1907-1909; Head of English Department, Nebraska Wesleyan University, 1902-1912; R. I. S. C., 1912.
- FRED SILVER PUTNEY, M. S. *Professor of Animal Husbandry*
 B. S., A. Z., Acacia; B. S., New Hampshire College, 1905; Assistant in Agronomy and Animal Industry, Pennsylvania Experiment Station, 1906-1907; Assistant in Animal Nutrition, Institute of Animal Nutrition, Pennsylvania State College, 1907-1908; M. S., Pennsylvania State College, 1908; Student, University of Missouri, 1908-1909; Assistant to Dean and Director, College of Agriculture, University of Missouri, 1909-1910; Professor of Animal Husbandry, 1910.

WILBUR EGBERT DOVE, U. S. A. *Professor of Military Science and Tactics*

Captain United States Army, Retired.
Cadet at De Veaux College, Niaraga Falls, N. Y., 1884-1888; Graduated with the rank of cadet captain; Enlisted in the United States Army, January 28, 1889; Private, Corporal and Sergeant, Co. "E," 12th Infantry, 1889-1892; Appointed Second Lieutenant, July 18, 1892; Promoted to First Lieutenant, April 26, 1898; Captain, February 2, 1901; Served with regiment, 12th Infantry, in garrison and in camp in North Dakota, South Dakota, Kansas, Nebraska, Missouri, Georgia, Florida, Cuba and the Philippine Islands; Retired from active service, December 17, 1901, as a result of "disability in line of duty due to a wound received in battle;" On duty with the United States Infantry Association in Washington, D. C., 1904-1905; On recruiting duty at Albany, N. Y., 1905-1909; Professor of Military Science and Tactics at Fork Union Military Academy, Virginia, September 17, 1911-January 2, 1912; Transferred to Rhode Island State College, January 2, 1912.

GEORGE ROBERT COBB, B. S. *Assistant Professor of Horticulture*
C S C; B. S., Massachusetts Agricultural College and Boston University, 1908; At A. N. Pierson and Company's Greenhouses, Cromwell, Connecticut, 1908; Appointed Instructor of Horticulture, 1909; Assistant Professor of Horticulture, 1910.

THOMAS CARROL RODMAN *Instructor in Woodwork; Supervisor of Buildings*
Appointed, 1890.

MABEL DE WITT ELDRED, B. S. *Instructor in Drawing*
B. S., Rhode Island College of Agriculture and Mechanic Arts, 1895; Appointed Instructor in Drawing, 1897.

HOWLAND BURDICK, B. S. . . . *Instructor in Dairying and Farm Superintendent*
B. S., Rhode Island College of Agriculture and Mechanic Arts, 1895; Appointed Assistant in Agriculture, and Farm Superintendent, 1896; Appointed Instructor in Agriculture, 1900; Appointed Instructor in Dairying, 1906.

DANIEL JOSEPH LAMBERT *Instructor in Poultry Keeping*
Appointed, 1907.

JOHN RALEIGH ELDRED, B. S. *Instructor in Mechanical Engineering*
B. S., Rhode Island College of Agriculture and Mechanic Arts, 1900; Engaged in practical work, 1900-1905; Instructor in Mechanical Engineering, Cornell University, 1900-1908; Appointed Instructor in Mechanical Engineering, 1908.

FRANCIS HERVEY SMITH, M. S. *Instructor in Chemistry*
X Φ ; Ph. B., Brown University, 1905; M. S., Brown University, 1906; Assistant in Chemistry, Brown University, 1906; Instructor in Chemistry, Purdue University, 1907-1908; Appointed Instructor in Chemistry, 1908.

FLORENCE H. MYRICK, B. S. *Instructor in Languages*
B. S., Wellesley College, 1892; Appointed in 1909.

ERNEST K. THOMAS, *Instructor in Nature Study and School Garden Work, Extension Department.*

- PAUL CLOKE, E. E. *Instructor in Physics and Electrical Engineering*
T B II; E. E., Lehigh University, 1905; Engineering Apprentice, Westinghouse Electric and Manufacturing Company, 1905-1907; Foreman, Market Street Gas Works, Public Service, 1907-1909; Corporation of New Jersey, Newark, N. J.; Instructor in Physics, Pennsylvania State College, 1909; Electrical Engineer, Westinghouse Lamp Company, Bloomfield, N. J., 1909-1910; Instructor in Electrical Engineering and Physics, 1910.
- FRANK HARTWELL BILLS, B. S. *Instructor in Mathematics and Surveying*
B. S., New Hampshire College, 1910; Appointed 1910.
- FRED J. GODIN *Instructor in Horticulture*
- MAURICE BROWN GREENOUGH, B. S. *Instructor in Mechanical Engineering*
Commons Club; B. S., Tufts College, 1912; With Winston & Co., Contractors, Brown Sta., N. Y., June to September, 1912; Appointed Instructor, R. I. S. C., September 1912; Member Boston Society of Engineers, American Society for Testing Materials, International Society for Testing Materials, Society for the Promotion of Engineering Education.
- J. STANLEY BEAMENSERFER, A. M., M. E. *Instructor in Mechanical Engineering*
Franklin and Marshall College, Pa., A. B., 1907; A. M., 1908; Cornell University, M. E., 1911; Instructor, Mass. Institute Technology, 1911-1912; Theoretical and Applied Mechanics, Testing Materials Laboratory, Instructor Rhode Island State College 1912.
- GLADYS E. BURLINGAME, A. B.
A. B., Smith College, 1911; Appointed Librarian, 1911.
- NELLIE ARMSTRONG HARRALL, B. S. *Instructor in Physical Training*
B. S., Rhode Island State College, 1905; Graduate of Sargent School for Physical Education, 1909; Physical Director at Wheaton Seminary, 1909-1910; Appointed Physical Director, 1910; In charge of Women's Dormitory, 1912.
- ROBERT A. LICHTENTHAELER, M. S. *Instructor of Geology*
B. S., University of North Carolina, 1902; M. S., University of North Carolina, 1904; Instructor of Chemistry, University of Florida, and Assistant Chemist Florida Experiment Station, 1903-1905; Assistant Chemist of Pennsylvania State Agricultural Experiment Station, 1905-1907; Assistant Chemist in Institute of Animal Nutrition of Pennsylvania, 1907-1909; appointed Assistant Chemist in Rhode Island Experiment Station, 1909; appointed Instructor of Geology in 1913.
- LEONARD A. MAYNARD, B. A.
B. A. Wesleyan University, 1911; Graduate Student Iowa State College, 1911-1912; appointed Assistant Chemist Rhode Island Agricultural Experiment Station, 1912; appointed Instructor in Industrial Chemistry, 1913.
- MISS SARAH WINDLE LANDES
Philadelphia School of Design for Women; Philadelphia School of Domestic Economy; Vienna Millinery Institute; Parisian Tailoring Academy; Pratt Institute and Teachers' College; Instructor Y. M. C. A., Toronto, Ont.; Ohio State School for Soldiers' Orphans; Georgia State Normal and Industrial College; Oklahoma State Agricultural and Mechanical College; appointed head of the Department of Economics, R. I. State College, Sept., 1912.
- LUCY COMINS TUCKER *Secretary to the President*
ALICE ELIZABETH BEALE *Bursar*
JENNIE CRANDALL THOMPSON *Bookkeeper*
GERTRUDE B. BURDICK *Bookkeeper*

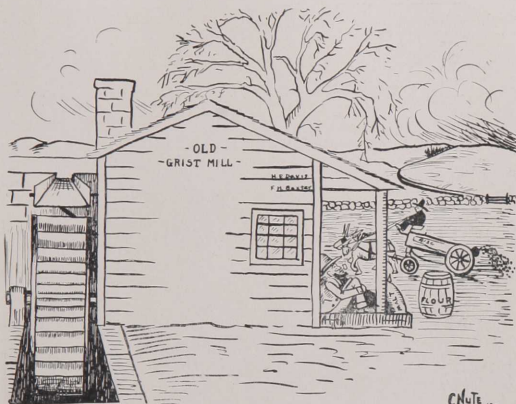
College Calendar

Tuesday, September 17, 1912.....	Chapel Exercises, 8:20 A. M.
	Registration, examination of entering and conditioned students, 9:00 A. M.
Wednesday, September 18.....	Recitations begin, 8:20 A. M.
Saturday, October 12.....	Columbus Day
Tuesday, November 5.....	Election Day
Wednesday, November 27, 12:00 M.	} Thanksgiving Recess
Monday, December 2, 8:20 A. M.	
Friday, December 20, 4:35 P. M.	} Christmas Recess
Thursday, January 2, 1913, 8:20 A. M.	
Tuesday, February 4, 4:35 P. M.....	First Term Ends
Wednesday, Thursday, Friday, February 5, 6, 7.....	Farmer's Week
Monday, February 10, 8:20 A. M.....	Second Term Begins
	Registration, 9:00 A. M. Recitations begin 1:00 P. M.
Saturday, February 22.....	Washington's Birthday
Friday, March 21.....	Good Friday
Friday, May 9.....	Arbor Day
Friday, May 30.....	Memorial Day
Sunday, June 15.....	Baccalaureate Address
Thursday, June 19.....	Commencement Exercises

GRIST BOARD



H. W. Browning J. H. Aldred J. R. Estey L. M. Sherwin J. F. Shea E. C. Webster
Miss O. Nicholson H. E. Davis F. H. Baxter L. A. Whittaker



The Grist

Editor-in-Chief

HENRY E. DAVIS

Associate Editors

LEROY M. SHERWIN	<i>Athletics</i>
HAROLD W. BROWNING	<i>History</i>
JAMES R. ESTY	<i>Grinds</i>
OLIVE NICHOLSON	<i>Organizations</i>
JAMES H. ALDRED	<i>Organizations</i>

Business Manager

FRANK H. BAXTER

Advertising Manager

LEROY A. WHITTAKER

Assistant Business Managers

JOSEPH F. SHEA

EARL C. WEBSTER



Class of 1913



1913 Class Roll

Officers

Honorary Member, PROF. ROYAL LINFIELD WALES, B. S.	
WALTER C. IRONS.....	President
IRVING C. MITCHELL.....	Vice-President
ESTHER L. CONGDON.....	Secretary
BENJAMIN COHEN.....	Treasurer
RALPH IRWIN ALEXANDER, B Φ.....	Baldinville, Mass.
REUBEN CHARLES BATES, B Φ.....	Providence, R. I.
CLARENCE ELMER BRETT, Φ Σ K.....	Brockton, Mass.
BENJAMIN COHEN, Δ Α Ψ.....	New Bedford, Mass.
ESTHER LOOMIS CONGDON.....	Wakefield, R. I.
JOHN WILLIAM CORR, P I K.....	East Greenwich, R. I.
DOROTHY DEARBORN ELKINS.....	Amesbury, Mass.
MARGUERITE WHITE ELKINS.....	Amesbury, Mass.
FREDERICK JOSEPH GODIN, Θ X.....	Kingston, R. I.
CRAWFORD PECKHAM HART, P I K.....	Melville Station, R. I.
WALTER COLWELL IRONS, Θ X.....	North Scituate, R. I.
THOMAS KYLE.....	Central Falls, R. I.
IRVING CALVARY MITCHELL, P I K.....	Oakland, R. I.
WILLIAM FRANCIS REDDING, P I K.....	Meshanticut, R. I.
WALDO REINER, Θ X.....	Brooklyn, N. Y.
ARTHUR LESLIE REYNOLDS, P I K.....	Providence, R. I.
GEORGE EDWIN SLOCUM, B Φ.....	Providence, R. I.
WALTER RAYMOND TURNER, Θ X.....	Johnston, R. I.
SUSIE STANTON WOOD.....	Slocum, R. I.
JAMES HANNIBAL YOUNG, B Φ.....	Brooklyn, N. Y.



Class of 1914



History of the Class of 1914

In September, 1910, some sixty-five decidedly green-looking specimens, the finished product of various preparatory schools, alighted from the train at Kingston and inquired the way to Rhode Island State College. We were received in a manner, common to all new-comers at an institution, and soon our green color had entirely made its disappearance. The co-eds of our class soon gave a reception in Davis Hall in honor of the fellows, who through the unexpected appearance of the Sophs, had some difficulty in keeping the eagerness.

Shortly after registration, the President of 1912, called our members together and then we organized as a class and elected our officers for the year. Dr. Sechrist was at that time chosen as our honorary member, but since then he has severed his connections with the institution and Prof. Dickinson now holds this place of distinction.

In all athletics during our Freshman year, we displayed marked ability, yet were unable to defeat the Sophomores in any sport. Early in the year, the "Freshman Literary Society" was formed, and many interesting programs were arranged. The benefits of this organization were made manifest in our Sophomore year when 1914 won the Inter-Class Championship in debating.

During our Sophomore year we were victorious in all branches of athletics, defeating the Freshman in Football by an overwhelming victory of 22-5.

In the class-room, 1914 has made an enviable record, and its members are found to be leaders in all student activities. 1914 is well represented on, and its members are the mainstays of all athletic teams that uphold the honor of Rhode Island. To show our ability and not boast about it has been our slogan.

The time is rapidly approaching when it will become necessary for us to assume the dignity of a senior. The fourth and last act of the wonderful play is soon to appear on the stage, the end will come before it can be hardly realized, the curtain slowly fall, and 1914 will exit from the college to which she will ever delight in bringing honor and glory.

1914 Class Roll

Officers

Honorary Member, PROF. LEONARD P. DICKINSON, B. S.

HAROLD W. BROWNING.....	President
HERBERT REINER	Vice-President
OLIVE NICHOLSON	Secretary
LEROY A. WHITTAKER	Treasurer
JAMES HILTON ALDRED, $\Gamma \Delta \Sigma$	Ashton, R. I.
WILLIAM EDWARD ANDERSON	Westerly, R. I.
FRANK HOWARD BAXTER, $B \Phi$	Mansfield, Mass.
ROBERT JOHN BENSON, $\Gamma \Delta \Sigma$	Brockton, Mass.
EDWARD JAMES BOULESTER	Providence, R. I.
JOHN BRECHIN, JR., <i>P. I. K.</i>	Bristol, R. I.
HAROLD WILLIAM BROWNING, ΘX	Matunuck, R. I.
SETH ATHERTON CALDWELL, $\Gamma \Delta \Sigma$	Woonsocket, R. I.
CEDRIC HAMLIN COLLINS, $\Gamma \Delta \Sigma$	Berkeley, R. I.
THOMAS ROWLEY CONNER	Wakefield, R. I.
HENRY ELLIS DAVIS, <i>P. I. K.</i>	Edgewood, R. I.
JAMES RUSSELL ESTEY, $B \Phi$	Slatersville, R. I.
MYRON WHITMARSH FINCH, <i>P. I. K.</i>	Providence, R. I.
HELEN WHEELER FORD	North Easton, Mass.
JOHN CHARLES GLYNN, ΘX	New London, Conn.
MYRON ANGELL HAWKINS, $B \Phi$	Providence, R. I.
CARLETON WALTER JONES	Providence, R. I.
HERMANN HARRY KARMAN	Providence, R. I.
LORENZO FOSTER KINNEY, JR., ΘX	Kingston, R. I.
WILFRED CHIPMAN MATTHEWS, $\Delta A \Psi$	Providence, R. I.
LEROY BURGESS NEWTON, <i>P. I. K.</i>	West Barrington, R. I.
OLIVE NICHOLSON	Pawtucket, R. I.
SARAH ALICE NICHOLSON	Pawtucket, R. I.
MILTON HARRIS PRICE, <i>P. I. K.</i>	Providence, R. I.
FREIDA REINER	Brooklyn, N. Y.
HERBERT REINER, ΘX	Brooklyn, N. Y.
LOUIS ROSSI, $B \Phi$	Westerly, R. I.
EDITH MARIE SAFFORD	Lancaster, Mass.
JOSEPH FRANCIS SHEA, $\Gamma \Delta \Sigma$	Valley Falls, R. I.
LEROY MERTON SHERWIN, <i>P. I. K.</i>	Quincy, Mass.
ALOY SOONG	Canton, China
HARVEY ROBERT TURNER	Providence, R. I.
ADELAIDE GILBERT WATSON	Peace Dale, R. I.
RICHARD WARD WESTON, $B \Phi$	West Bridgewater, Mass.
LEROY ALLEN WHITTAKER, <i>P. I. K.</i>	Central Falls, R. I.
EARL CLIFTON WEBSTER, $B \Phi$	Providence, R. I.
EDWIN OLNEY YOUNG	East Greenwich, R. I.

JAMES HILTON ALDRED, Γ Δ Σ Ashton, R. I.

"Jimmy" Mechanical Engineering
Class Football (1) (2); Scholastic Honors (1)
(2); Class President (2); Chairman Soph. Hop Com-
mittees (2); Corporal (3); Grist Board (3).

"Jimmy" entered R. I. in 1909 as a prep, and the following year registered in Mechanical Engineering with the class of 1914. His most prominent hobbies are four in number; the first is studying, the second plugging, the third grinding, and the fourth military drill. As a result, his path has been strewn with a vast succession of "A's," and, after serving faithfully in the ranks for three years, he was promoted, last fall, to the rank of corporal, for distinguished bravery on the field of action.



WILLIAM EDWARD ANDERSON Westerly, R. I.

"Bill" Agriculture
Stock Judging Team (2); Secretary Agricultural
Club (2); Vice President (3); Corporal Co. C. (3).

When the various entrances in the noble halls of R. I. C. were designed, the architects little calculated on "Long Bill" ever entering the institution, for he seems to have considerable difficulty in passing through without at least bumping his head on the top casing and stubbing his toe on the sill at the same time. Bill brings forth the idea of the wrong in studying on Sunday. Oh, you Bill, you can't make us believe that some member of the fair sex is not the real cause of your earnest efforts to finish your work before the seventh day. "Cheer up Bill, when you are the possessor of the many fine steeds you intend to raise, you will have the advantage of us all in the courting line."



FRANK HOWARD BAXTER, Β Φ Mansfield, Mass.

"Pot" Mechanical Engineering
Scholastic Honors (1); Class Football (1) (2);
Class Basketball (2); Soph. Hop Committee (2);
Corporal Co. B. (2); Varsity Debating Team (2);
Mandolin Soloist Glee Club (2) (3); Glee Club
(2) (3); Class Debating Team (2); Assistant
Manager Varsity Baseball (3); Business Manager
1914 Grist (3); Sergeant Co. B. (3).

Who is that tub-shaped image with the "four eyes" and the would be rah-rah hair-cut, piking across the campus, with his shoulders bracing back with every melodious note of his corduroy trousers. Ah, no! He's not a tinsmith or a bass horn player. He's Hon. F. H. Baxter, alias "Pot."

This man knows, doubtlessly, more of how to entertain without money a young miss at a swell hotel dinner than anyone else at college with the possible exception of Young, '13.

"Pot" is a Bay Stater, coming from Mansfield, Mass. He passed his Freshman year somewhat in darkness, due probably to the fact that he helped a neighboring farmer milk cows and chase the pigs in his spare time. But the second year of his liberal education he spent at the Beta Phi house, where he has become the "bouncer."





ROBERT JOHN BENSON, J' Δ Σ Brockton, Mass.

"Ben" Electrical Engineering
Class Track (1) (2); Varsity Track Squad (1)
(2); Class Basketball (1) (2); Class Baseball (2);
Polygon (2) (3); Sophomore Hop Committee,
Tennis Association, Engineering Society.

It was on the twentieth day of September, 1889,
that "Ben" was ushered into the "shoe city" of
Brockton. Not much is known of him until he
came to us on his twenty-first anniversary. Since
then he has learned to distinguish the country
from the city? "Ben" is an excellent student and
during study hours he is never seen loitering
around the corridors. We hope to see him some
day as the inventor of the five pole generator.



EDWARD JAMES BOULESTER Providence, R. I.

"Eddie" "Doc" Applied Science
Corporal Co. C (3); Glee Club (3); Reader (3);
Vice President Debating Society (3); Member
2nd Debating Team (2).

In his youth "Eddie" gave prominence of be-
coming a giant, but unfortunately, the growth went
to his feet. He was trapped in the wilds of Acad-
emy Avenue of Providence and after being tamed
for four years in English High, he was sent here
for further confinement. Last summer he issued
what is now universally known as "Boulester's
Business Directory of Usquepaugh," the lines of
which are written in blank verses. Well-known
critics have pronounced it to be the best literary
production the world has as yet witnessed. The
school authorities in Jimmietown and Biscuit City
have adopted it as a regular text-book.

"Eddie's" highest ambition is to become at first
alumni president of his Alma Mater, at which
time, he will deal a death blow to the short-cut,
narrow-gauge, copy-lighting express two years'
courses.



JOHN BRECHIN, JR., P I K Bristol, R. I.

"Breck" Mechanical Engineering.
Class Baseball (2); 1914 Literary Society (1).

"Breck" came to us from Bristol, where he gradu-
ated from high school in 1908. After working two
years he decided that he would like to become an
engineer and so took mechanical engineering. While
here he has been apparently quiet but has had his
part in "rough housing" and having that innocent
look has never been suspected. He is usually ready
for a good time when it does not interfere too much
with studies or writing a letter. He has spent most
of his time on his studies and we will look forward to
the time when he is a full-fledged engineer.

"Still water runs deep."

HAROLD W. BROWNING, Θ X

Matunuck, R. I.

"Funny" "Gramp" Applied Science
President of Freshman Literary Society (1);
Corporal (2); Secretary Debating Society (2);
Member of Class and Second Debating Teams
(2); Beacon Board (2) (3); Assistant Treasurer
of Lecture Association (3); Assistant Botany
Instructor (3); Polygon (3); Assistant Manager
Basketball (3); Associate Editor 1914 Grist (3);
Scholastic Honors (1)(3); Sergeant (3); Treasurer
Y. M. C. A. (3); President Athletic Association
(3); President of Class (3)

"Funny" comes from Matunuck, which is often compared with New York (200 inhabitants). During the first two years of his collegian life he remained in the dormant stage concerning the other sex. However, during his Junior Year, "My what a change." Peacedale three times during the week and all day Sunday. "Gamp" says that the reason he spends so much time there is because he is collecting material (from practical experience) for a book which he is writing, entitled, "The Joys of Canoeing." The work will be published in July 1914.



SETH ATHERTON CALDWELL, Woonsocket, R. I

"Scrim" Mechanical Engineering
Class Football (2); Varsity Football (3); Corporal
(2); Drum Major (3)

Seth is a native of Toledo, Ohio. The corn belt was not interesting enough for Seth, so he located in Woonsocket. He joined the class of 1912 here but was forced to leave in their Sophomore year on account of blood poisoning. However, he joined us last year and is taking a mongrel course of his own arrangement and will be with us strong at the finish.



CEDRIC HAMLIN COLLINS, Γ Δ Σ Berkeley, R. I.

"Cy" "Yena" Applied Science
Beacon Board (1) (2); Manager Class Football
(2); Soph. Hop Committee (2); Polygon (2); Vice-
Pres. Athletic Association (2); Class Baseball (2);
Corporal (3)

This modest looking youth entered R. I. S. C. in the fall of 1910, and immediately took up connections with the "Kelly Gang," the membership of which required rough-housing ability only. He quieted down a bit during his sophomore year however. There was a decided change in the "boy" when he became a sedate junior. He has collaborated with Prexy in the economic management of the college by forfeiting his daily breakfasts. "Cy" is an inveterate user of the pipe, but has not lost control of his skillful hand in the construction of graphics.





THOMAS ROWLEY CONNER,

Wakefield, R. I.

"Tommy" began his career at R. I. with the class of '14. His work has been exclusively original, and it is this fact alone, perhaps that has put him among the peers of the spy-glass squad. Although "Tommy" does not take part in athletics to any great extent, he is ever ready to lend a hand, and whenever needed can be relied upon. Aside from being a good man with the books, "Tommy" is well known and will be remembered for his abilities (?) at the forge and machine shop.



HENRY ELLIS DAVIS, P I K

Edgewood, R. I.

"Davy" "Harry" Agriculture
Class Football (1) (2); Class Baseball (1) (2); Dramatic Society (1) (2); Rifle Club (1); Team (1); Glee Club (1) (2) (3); Orchestra (1) (2) (3); Manager (3); Aggie Club; Editor-in-Chief Grist (3); Subscription Manager Beacon (3); Corporal Co. A (2); First Sergeant Co. A (3); 1914 Literary Society (1); Class Debating Team (2); Debating Society (2) (3); Treasurer (3); Varsity Football (3); Polygon (3); Mil. Ball Committee (3); Business Manager Beacon (3).

Athlete, scholar, orator, literary critic, debator, farm manager. We have all these things embodied in this wonderful human being, who has all the ear marks of a great man, so "Davy" says. "Davy" has always had what seems to be an inherent desire for a good time, but one thing is certain, "Harry's" natural inclinations have never stopped him from carrying to a successful culmination all of his undertakings. One must watch very carefully to shut it off when once he gets started on aggie matters.



JAMES RUSSEL ESTY, B Φ

Slatersville, R. I.

"Jimmy" Chemical Engineering
Polygon (3); Student Council (2) (3); Vice President Y. M. C. A. (3); Mgr. Class Baseball (2); Sec. Athletic Association (2) (3); Corporal (2); Q. M. Sergeant (2); 2nd Lieutenant (3); Soph. Hop Comm. (2); Scholastic Honors (1); Editor-in-Chief 1912 Hand Book (2); Associate Editor Beacon (2) (3); 1914 Literary Society (1); President Woonsocket Club (3); Indoor Track Comm. (2); Associate Editor 1914 Grist (3); Editor-in-Chief Beacon (3).

Although Jimmy's manly blushes and winsome smiles have made him the attack of the combined co-ed body, he has gained world wide reputation by directing all feminine communications homeward.

Assuming that our class model does not make a success along clerical lines he will probably be found as chief chemist in some large distilling plant (Pabst or Schlitz) of the country.

MYRON WHITMARSH FINCH, PIK Providence, R. I.

"Mike" Agriculture
Class President (1); Class Football (1) (2);
Class Basketball (1) (2); Captain (2); Class Base-
ball (1) (2); Class Track (1) (2); 1914 Literary
Society (1); Glee Club (1) (2) (3); Corporal Co.
C (2) (3); Aggie Club (1) (2) (3); Beacon Board
(2) (3); Soph. Hop Committee (2); Cheer Leader
(2).

"Mike" first became notorious by becoming president of the class in our Freshman year. His chief ambition is to sing, and if he were stopped for fifteen minutes he would pine away. "Mike" has striven for athletic honors in all branches of sports, from the brutal game of football to the delicate act of fussing. He reached the zenith of his athletic career in his Sophomore year, when he became cheer leader. Dissatisfied in his love affairs, in the summer of 1912, he migrated to the wild and woolly west, but, fortunately for 1914, several "hopes" brought him back to us again.



HELEN WHEELER FORD, North Easton, Mass.

Girl's Athletic Association (1) (2) (3); Treas-
urer (3); Girl's Assembly (1) (2) (3); Scholastic
Honors (1) (2).

"Good words go ever with the lady's name."

It has been whispered that Helen is a quiet sedate young lady and we believe she reigns supreme in the library as the result of this reputation. Helen is one of those nervous, conscientious girls who is always fearing failure but to whom failure never comes. She has an inquiring and an acquiring turn of mind and continues to hold the good record she brought with her from North Easton. She tried her luck as a village student but found the loss of Davis Hall too great so returned to "Angels' Row" to take up her abode once more among her classmates. She has been coquettish on some occasions but claims to be a devotee man-hater.



JOHN CHARLES GLYNN, Θ X New London, Conn.

"Tac" Alderman Applied Science
Class Football (1); Manager Class Track (1);
Executive Committee Tennis Association (2);
Corporal (2); Varsity Football (3); Sergeant (3);
Treasurer Rifle Club (3).

This distinguished member of our class decided to become a collegian in September 1910, when he entered Brown University. Finding the city life entirely too tame, he decided to come to Kingston, where he might devote more time to social functions and less time to studies. He first attempted the engineering course, but finding that too easy for his marked ability, he changed to the Applied Science course. "Tac" always has a good supply of wit with him and is always causing a laugh. His greatest ability is as a scoiist. Whatever profession which "Tac" enters, the best wishes of the class of 1914 are with him.



MYRON ANGELL HAWKINS, B Φ Providence, R. I.



"Myney" Agriculture
Varsity Relay Team (1) (2); Track Team (1) (2); Manager (3); Agricultural Club Treasurer (3); Stock Judging Team (3); Class Track Team (1) (2); Captain (2); Scholastic Honors (2).

Myron is a very quiet, modest little chap, who thinks much, but says little about some things. Studies seem to bother him but little.

In love "Myney" is a batchelor so far, but his many references to the fair sex indicate that his ambition savors of developing into that of a confirmed fusser in the near future.

Orcharding and poultry-keeping are the speed-boy's ambitions for life after he receives a cum-laude in the spring of 1914.

CARLETON WALTER JONES, Providence R. I.



"C. W." Civil Engineering

June 3, 1890. Add this to your list of important dates to be remembered. Why? you ask. Because it marks the advent of no less a personage than Carleton Walter Jones, B. S., C. E.

"C. W." came to Rhode Island from Technical, where he was a member of the track team. His attempt to "come back" as a college sprinter was unsuccessful. In his Sophomore year he gained fame and distinction in the cheering section at baseball games as the loyal rooter of all. He is also a great favorite of the co-eds (at meal time).

Jones is a model youth, being ever present in Christian Endeavor and Y. M. C. A. circles. His hobby is to "hit the pike" at a mile-a-minute clip on a twin cylinder "Indian" motor cycle. But on the level, he is a passenger on that slow-but-sure "local" with the motto, "It's the plodder who gets there."

HERMAN HARRY KARMANN Providence, R. I.



"Herman" Civil Engineering

Herman comes from Providence, where he is a shrewd business man, especially well-known in newspaper circles. He maintains an excellent reputation as a fusser in Pawtuxet. He is one of those quiet, busy ones who never wastes a minute. When in Kingston, he works while we sleep, our guardian angel during the silent hours of the night.

As an athlete he is an exponent of the "manly arts," as his roommates will testify. It is generally rumored that engineering projects in the middle west will prove his attraction at the close of his college career. We wish him success.

LORENZO FOSTER KINNEY, JR., Θ X Kingston, R. I.

"Lorenz" Applied Science
Scholastic Honors (1) (2); Class Track (1)
(2); "Kingston Prize" Essays, 3rd (2); Sergeant
Co. C. (3); Associate Editor Beacon (3).

This "Prodigy" is the only true product of
Kingston in our midst. Just why such a genius
should find himself at home among 1914 remains
beyond our conception. Some claim it is not only
the companionship of talented contemporaries,
but that the "campus queens" exert a mysterious
influence. In classes Lorenzo has proven his
motto, that mum's the word, unless called upon
and then no end (till Prof. Adams is convinced?).
At other times he may be found in the swamp,
industriously digging his fame as a future Rhododendron King.



WILFRED CHIPMAN MATTHEWS $\Delta\Delta\psi$ Providence, R. I.

"Bill" Electrical Engineering
Class Football (2); Corporal, Company A. (2);
Sergeant Company A. (2); Sergeant Major (3);
First Lieutenant (4); Rifle Team (3); Soph. Hop
Committee, Orchestra (2) (3);

Bill was born in Providence in 1891. The greater
part of his life was spent there, but in 1908
he decided to honor R. I. S. C. by prepping here
and from thenceforth he has been a loyal Rhode
Islander. Although Bill never cared much for
electricity, after long years of persuasion he was
finally influenced to take a course in electrical
engineering. His tastes run mostly to mathem-
atics and fussing, which is proved by his pain-
taking labors at solving the Worcester problem.



LERROY B. NEWTON, Π K Fairhaven, Mass.

"Newt" Electrical Engineering
Class Football (1) (2); Class Basketball (1);
Class Baseball (1); Class Track (2); Varsity Foot-
ball (2) (3); Varsity Basketball (2); Varsity
Track (1); Varsity Baseball (1) (2); Captain-
elect (3); Vice President Student Council (3);
Corporal Co. A. (2); Q. M. Sergeant Co. A. (3).

"Newt" from his first day here at Rhode Island
showed great consideration for his classmates by
helping in athletics, and for himself by endeavor-
ing to get and keep his Hartwell. Cupid is his
physician. "Newt" is not a dunce by any means,
nor unredeemably lazy. He is a perfect gentleman
and if he has any faults they are hard to find. In
fact, if "Newt" just gets three good "squares" in-
to his "bread-basket" each day with a snatch of
an after supper letter big enough to keep his heart
well, he is perfectly harmless.





OLIVE NICHOLSON

Pawtucket, R. I.

"Olive"
Home Economics
Scholastic Honors (1) (2); Class Secretary (2) (3); Vice President Y. W. C. U., Beacon Board; Program Committee, Literary Society; Girls' Athletic Association.

The envy of the duller minds, Olive has always set the pace for the most brilliant. In fact, one hundred per cent. in a math. exam. was a mere trifle with her. In literary work also, in connection with the Beacon her work is not unknown. Although chemistry was of "Big" importance to Olive, we believe that her work in the home economics course, which attracted her to the cause during her Sophomore year, will be of very practical value to her in the near future.



SARAH ALICE NICHOLSON,

Pawtucket, R. I.

"Sarah"
Home Economics
"Smiles to all, to all she smiles extends,
Oft she rejects, but never once offends."

Full of the spirit and bouyancy of youth Sarah entered R. I. after having completed a most successful course at Pawtucket High School. Her bright and gay disposition made her a valuable classmate. Walking was one her best-liked pastimes in the days when "Young Tip" was around but when he wandered off to Philadelphia Sarah became the predominating spirit of Davis Hall. Formerly every Friday evening somebody would "tip-toe" to Sarah's room. For a time, Sarah was quite lonesome. Now when Friday comes around, Sarah sings as blithly as a lark, and the 5:10 speeds her home, where in the evening the "Tip-Nic" players render a "Man-Ban" concert to the Nicholson family.



MILTON HARRIS PRICE, P I K

Providence, R. I.

"Pricie," "Milt"
Agriculture
Class Baseball (1) (2); Capt. (1); Varsity Baseball (1) (2); Class Football (2); Varsity Football (2) (3); Sergeant Co. A (3); Orchestra (2) (3); Reception Committee, Military Ball (3).

"Pricie" blew in from Providence the second term of our freshman year. We must admire "Milt's" persistency in athletics and if our R. I. S. C. had a hockey team he might have another chance to shine. He is an excellent student (when he studies). The rest of the time his actions are characteristic of all full-fledged farmers. After "Pricie" gets his B. S. and has settled down on his little farm in Barrington, we expect great things from him.

"When 'roughhousing' interferes with studies, give up the studies," is "Pricie's" motto.

FREIDA REINER

Brooklyn, N. Y.

"Frieda" Home Economics
Y. W. C. U. (1) (2) (3); Girls' Athletic Association (1) (2) (3).

"Come and trip it as you go"
"On the light fantastic toe."

Freida came to us from Brooklyn, guarded by her two brothers. Her peaceful, quiet nature is known to all. Her excellent preparatory course has enabled her to finish her college work in three and one-half years. Her main occupation is trying to keep Edith in "the straight and narrow path." Her advancement as an instructor is certain, for her ability has already been seen. We all wish her success and prosperity in the future.



HERBERT REINER, Θ X

Brooklyn, New York.

"Herb" Agriculture
Manager Class Basketball (1) (2); Captain Class Track (1); Treas. Agricultural Club (1); Rifle Team (1); Vice President Agricultural Club (2); Vice President New England Federation of Agricultural Students (3); Varsity Track (1) (2); Corporal (2); First Sergeant (3); Class Vice-President (3); Assistant Varsity Football Manager (3); Manager-elect (4).

"Herb" came from Brooklyn. Yes, Sir! Came to show this little place a few new ideas, for instance: a remedy for the Davis Hall habit—very simple—spend your spare time up in the village; and a solution for another puzzling problem—to keep well up in studies while apparently devoting your entire time to athletic and social activities. But never mind, we all know that he thinks rough-houses afford the best real entertainment of them all.



LOUIS ROSSI, B Φ

Westerly, R. I.

"General" Civil Engineering
Secretary Day Students, Organization (1) (2).

Louis Rossi, better known as "General," was blown by a gentle breeze from sunny Italy, via Westerly, one day in 1909, and landed safely upon the steps of Davis Hall. He easily completed the prep. course and entered the class of '14, the following year, in which he has kept a fast and steady pace ever since. "General's" favorite subjects are mathematics and mechanics, and in these subjects he has "shown" the boys. He has little use for text books; he uses his own head. "General" makes friends easily and is well liked by his classmates, who wish him success.



EDITH MARIE SAFFORD

Lancaster, Mass.

"Edith"
Literary Editor Beacon (3); "The Village Queen" (1) (2) (3).



September of 1910 brought us Edith who previously had spent a year at Wheaton Seminary. At first we thought she was pensive and demure, but as time rolled on we found her to be buxom, blithe, and debonair. Books do not complain of lack of rest in Edith's company. One of her devouring glances gives her what others have to boil and labor for. On her daily journey to college, lonesomeness never seems to trouble her. For Edith's sake many a duty is neglected, many a meal is lost. Nature study seems to her of more importance than hours spent in gymnasium work. Although Edith's future to us is vague, we are confident that her cheerfulness will always add many true friends to her present endless number.

JOSEPH FRANCIS SHEA, P Δ Σ Valley Falls, R. I.

"Joe"
Electrical Engineer.
Orchestra (1) (2); Y. M. C. A. Accompanist (1); Manager Class Track Team (2); Beacon Board (3); Associate Business Manager of Grist (3); Engineering Society; Tennis Club; Rifle Club.



"Joe" is sure some boy, but it is hard to state what he's a shark at. Personally, we refuse to state what his ambition may be, although, we have noticed tendencies along certain lines. Whether or not, he will continue along the same lines is none of our business; but, at any rate, we can give away some of his secrets. He's somewhat of a camera enthusiast; goes fussing once in a while; and, thinks nobody knows anything about his escapades. Well, here's hopes you might, dear reader, let him off easy. But we are not going to because we're going to have him explain why he can tickle the ivories, better than Bell (s).

LERoy MERTON SHERWIN, P I K Quincy, Mass.

"Tubby"
Agriculture
Class Vice-President (1); Glee Club (1) (2) (3); Varsity Football (1) (2) (3); Captain-elect (3); Class Football (1) (2); Capt. (1) (2); Class Baseball (1) (2); Class Track (1) (2); Varsity Track Squad (2); 1914 Debating Society (1); Chairman 1914 Banquet (1); Athletic Editor Grist (3); Rifle Club (3); Ass't Mgr. (2); Manager (3); Corporal (2); Q. M. Sergeant (3).



"Tubby" was the only man in his Freshman class to make the Football team. This ought to be introduction enough for anyone. He attended Cuyahoga Falls, Ohio, high school before coming to Rhode Island and gathered knowledge enough to set him on the road to a brilliant career as an engineer, but the "aggie" bug has stung him and now he spends all his time in drawing pictures of his future farm. We intend to get a life sized picture of "Tubby" milking a cow before he graduates.

ALOY SOONG

Canton, China.

"Joe"

Chemical Engineering

Kingston Prize (2); 2nd Team Debating (2);
Class Debating Team (2); Debating Society (2)
(3); Secretary (3).

Aloy, who traveled 10,000 miles to attend R. I. S. C., is the direct descendent of Lee Whang Bull, the first Chinaman known to have introduced science into China. He has proven himself a worthy successor to this famous educator, as exemplified by his ability in English classes to inform us of the sentiments expressed by unknown professors out in Missouri somewhere.

While at college so far he has been successful in bumming tobacco, smoking cigarettes, breaking up the Chem. Lab., and by classifying shells in Geology. He has turned his interests toward Chemistry and will soon have completed Mendeleeff's periodic table.

Since this Chinese giant comes from a land where deafness prevails, we all have had to excuse him for his extreme noisiness.



HARVEY ROBERT TURNER,

Providence, R. I.

Civil Engineering

Class Football (1) (2); Class Track (1) (2).

Harvey came to us from Technical High which perhaps accounts for his being a Math shark. He is a very busy man, but nevertheless has found time for athletics. When we wanted a left-end for our football team he was there; when we wanted a little endurance for the two-mile, he was there. When it comes to burning the midnight oil, he is there. He is always heard singing some ole German lullaby, and is well-known for his wit. He'll make some engineer.



ADELAIDE GILBERT WATSON Peacedale, R. I.

Secretary of the Dramatic Club (2); Secretary of the Y. W. C. U. (3) (4); Vice-President of the Girls' Athletic Assn. (3) (4).

Adelaide, with her winning ways, descended upon us in the middle of our Freshman year. She soon won the reputation of being very conscientious and studious, but never too busy to take part in a good time. She delights in studying "Life" and "nature," as manifested by frequent sessions in the library and long walks. Judging by appearances, it might be suggested that upon finishing her college course, she will have no scruples against becoming a Bride(n).



EARL CLIFTON WEBSTER, B Φ

Providence, R. I.



"Fat" Civil Engineering
Class Football (1) (2); Glee Club (1) (2) (3);
Sec. 1914 Literary Society (1); Ass't Mgr. Glee
Club (2); Soph Hop Comm. (2); Assoc. Editor
Beacon (2); Mgr. Glee Club (3); Sergeant Co.
B. (3); Ass't Business Mgr. 1914 Grist (3); Var-
sity Football (3); Mill Ball Comm. (3).

Bright, Breezy, Bellicose, Bustling, Buster:
That's our "Fat." He can't laugh without shaking
all over, and he can't move without laughing all
over. That's the reason they call him the jolly
fat man. Does he dance; do his thoughts ever
drift toward the fair sex; just mention Pawtuxet
and see the big boy laugh. Earl is right on the
job, for on the last New York trip of the Glee
Club he "slipped one over" on the crowd when
he took the "belle of the ball" safely home. Ask
him what time he returned and see him smile again.

RICHARD WARD WESTON B Φ East Bridgewater, Mass.



"Dick" Agriculture
Class Football (2); Class Basketball (2); Class
Baseball (2); Varsity Track Squad (2); Soph.
Hop Comm. (2).

In September of 1911 "Dick" bid good-bye to
the "other resident" of East Bridgewater and took
his departure for Rhode Island to join the Class
of 1914. We have had to "hand it to him" in cer-
tain branches of athletics (including numerous
long walks on Friday evenings), and in the ma-
jority of successful "rough-houses" in the north-
west corner of the campus. "Dick" is a registered
"aggie," but often bewails a miscalling, for he
thinks, as do we all, that his proper course should
have been one at the Yale Divinity School.

LEROY ALLEN WHITTAKER, P I K Central Falls, R. I.



"Whit" Electrical Engineering
Class Baseball (1) (2); Captain (2); Varsity
Baseball Squad (1); Scholastic Honors (1)
Military Ball Comm. (1); Soph. Hop Comm. (2);
Corporal Co. A. (3); Class Treas. (2) (3); Class
Debating Team (2); Advertising Mgr. 1914 Grist
(3); Ass't Mgr. Varsity Track (3); Glee Club (3);
Elec. Eng. Society (3); Ass't Mgr. Interclass
Meets (3); Student Member Am. Institute Elect.
Eng.

In the autumn of 1910, after five years of prac-
tical experience along electrical lines, Central
Falls ousted "Whit" and gave orders that he re-
main away four years. After considerable pon-
dering, he decided to spend them at R. I. S. C.,
and further enlighten his copious mental regions.
His two strong points are his studies and non-
sense, and he is equally efficient in both. He has
vowed that his life's research work will be to find
the yet undiscovered hair restorer.

EDWIN OLNEY YOUNG, East Greenwich, R. I.

"Ed" "Stevie" Electrical Engineering
Class Baseball (1) (2); Band (2) (3).

Hailing from the West Indies, "Stevie" first occupied the limelight in this country, by attracting the attention of major league scouts while playing third base for N. K. H. S. It is said that from his childhood "Stevie" gave great promise as an electrical engineer, having at the age of three, mastered the principles of direct and alternating currents. Spurred on by the desire to become one of our foremost engineers and orators, "Ed" joined our class in its freshman year, and has since been one of its best students. His ability as a manager of men and his experience with the social set at Newport, recently won for him the position of Manager of the Kingston Non-pariels. To him we wish the best of success.



Phantom Roll

EDWIN ANDERSON, $\Gamma \Delta \Sigma$	Newport, R. I.
LOUIS WHITMAN ARNOLD, JR., $A \Delta \Psi$	Westerly, R. I.
EDWIN STATES BABCOCK	East Greenwich, R. I.
THEODORE EDGAR BLACK, JR.	Westerly, R. I.
HERMAN BYRON BROWN	Hope Valley, R. I.
POWELL BURDICK	Wickford, R. I.
THOMAS FRANCIS CARBERRY	Providence, R. I.
JOHN CASEY	Newport, R. I.
CHARLES BROWNING CLARKE, ΘX	Wakefield, R. I.
HENRY MARSH CLARKE, ΘX	Westerly, R. I.
GLADYS HARTWELL	Kingston, R. I.
FRED H. HULING	Central Falls, R. I.
HERBERT GEORGE HUNTLEY, $\Gamma \Delta \Sigma$	New London, Conn.
CHESTER LEWIS KNOWLES, $B \Phi$	Point Judith, R. I.
ALEXANDER D. MACLELLAN, $\Gamma \Delta \Sigma$	Newport, R. I.
CYRIL MERCER MAY, ΘX	East Greenwich, R. I.
ETTA ELIZABETH MEEARS	Kingston, R. I.
JAMES EDWARD MCGOLRICK	New York, N. Y.
JOSEPH GEORGE NATHANSON	Central Falls, R. I.
WILLIAM HENRY OSLIN, $B \Phi$	Providence, R. I.
RAYMOND GEORGE POLLARD	Central Falls, R. I.
THOMAS JOHN SPARGO	Westerly, R. I.
HAROLD FRANCIS THAYER	Woonsocket, R. I.
ALBERT LEWIS THORNLEY, <i>P. I. K.</i>	Pawtucket, R. I.
MYRON GRIFFEN TUCKER, ΘX	Wakefield, R. I.
LORRIMER ALTON WINSLOW, $B \Phi$	Valley Falls, R. I.



1914 SOPHOMORE FOOTBALL TEAM



1914 SOPHOMORE BASKETBALL TEAM

1914 Debating Teams



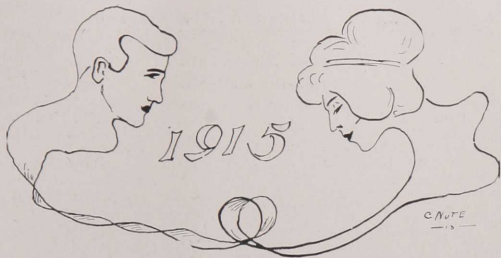
Victors over 1913



Victors over 1915



Class of 1915



History of the Class of 1915

It was in September, 1911, that we entered as Freshmen, sixty strong. Soon after we arrived, an unofficial reception committee entertained several of our more prominent members, who felt highly honored. We were also entertained by the co-eds of our class in Davis Hall in spite of the efforts of 1914.

Then came the class football game. Our team, which boasted not a single Varsity man, was pitted against a heavier team whose backfield was made up of three Varsity men. Suffice it to say that we retired from the field defeated by a score of 22 to 5. In basketball we did our best to "come back" and it required five minutes of overtime play to defeat us 14 to 10. Not daunted, we organized a strong baseball team and went out to conquer. We succeeded in several outside games, but our manager was unable to find a date acceptable to the Sophomores.

The next fall saw our class much reduced. We were nevertheless able to defeat the Freshmen in a dual track meet. In football, we were less fortunate. Our team, weakened by the loss of several of the previous year's men, fought hard, but was unable to overcome the Freshmen's lead of 6 to 0. The next day was Sunday, but it had none of the traditional quietness of the Sabbath, for at noon several Sophs seized the Freshman banner that floated tauntingly from the flag pole. In resentment, the Freshmen seized two Sophs, carried one to an isolated house in the woods and branded the other with iodine. It later appeared that the banner was under Prexy's guardianship, but the evil had been done and the banner has not yet been located and returned.

In the meantime our class had held on the 22nd of November their Sophomore Hop. This affair was well carried out and proved to those in attendance that the class of 1915 is capable of doing things.

1915 Class Roll

Officers and Members

Honorary Member, PROF. MARSHALL H. TYLER.

LAWRENCE F. KEITH	President
CLIFFORD A. ALLENSON	Vice-President
ADA L. HARDING	Secretary
FRANK J. LENNOX	Treasurer
CHESTER WILLIAMS ALLENSON, $\Gamma \Delta \Sigma$	Central Falls, R. I.
CLIFFORD ARNOLD ALLENSON, <i>P. I. K.</i>	Central Falls, R. I.
RAYMOND LIVINGSTON BARNEY, $B \Phi$	Providence, R. I.
ROBERT WILLIAM BELFIT, $B \Phi$	Kingston, R. I.
NORMAN HARRISON BORDEN, ΘX	Providence, R. I.
HENRY HARRINGTON BROADFOOT	Westerly, R. I.
KENNETH ALLEN BROWNELL	Adamsville, R. I.
PHILIP ROYAL CLOKE, $\Delta A \Psi$	Kingston, R. I.
CARL LAFAYETTE COLEMAN, <i>P. I. K.</i>	Orange, Mass.
LILLIAN MARGUERITE DONOVAN	Westerly, R. I.
EUGENE JOSEPH FLAHERTY, <i>P. I. K.</i>	North Attleboro, Mass.
CURTIS WOLCOTT GATES, <i>P. I. K.</i>	New London, Conn.
JANET SAXON GRAY	Allenton, R. I.
CARLISLE HALL, $B \Phi$	Providence, R. I.
WILLIAM FRANK HANLIN, <i>P. I. K.</i>	Arlington, R. I.
ADA LAPLACE HARDING	Lynne, Conn.
LEON IRVING HARRIS	Bryantville, Mass.
ROYAL CARLETON HUDSON, ΘX	Phoenix, R. I.
ALBERT CLAYTON HUNTER, $B \Phi$	East Providence, R. I.
JOHN LOUIS JACKOWITZ, <i>P. I. K.</i>	East Providence, R. I.
LAWRENCE FULLER KEITH, ΘX	Campello, Mass.
HENRY CLINTON KELLY, $\Sigma \Delta \Sigma$	Nayatt, R. I.
ALFRED PATRICK KIVLIN, $\Delta A \Psi$	North Attleboro, Mass.
FRANK JOSEPH LENNOX, ΘX	Woonsocket, R. I.
GEORGE MITCHELL LEWIS	Kingston, R. I.
WILLIAM EMANUEL LEWIS, <i>P. I. K.</i>	East Providence, R. I.
ALBERT EDWARD MCINTOSH	Providence, R. I.
FRANK HARRY MEYER, <i>P. I. K.</i>	North Attleboro, Mass.
WESLEY CLIFTON MILLER, ΘX	Providence, R. I.
HAROLD CONRAD MOWRY	North Scituate, R. I.
JOSEPH ELTON NICHOLS, $\Gamma \Delta \Sigma$	Woonsocket, R. I.
HARRY OSCAR VALDIMAR NORDQUIST	Providence, R. I.
RALPH LANGLEY PARKER, $\Delta A \Psi$	Brockton, Mass.
CHESTER WARREN RUGG, ΘX	Brocton, N. Y.
WALTER CURTIS SENIOR, ΘX	Amesbury, Mass.
FRANK EDWARD TABOR, $B \Phi$	Slatersville, R. I.
WALDO TRESMOTT, $\Delta A \Psi$	Pawtucket, R. I.
WILFRED NICHOLS WALES	Groveland, Mass.
HAROLD CLAYTON WILCOX, $\Delta A \Psi$	South Milford, Mass.
ALVAH GRAY WOODWARD	Wakefield, R. I.

1915 Football Team

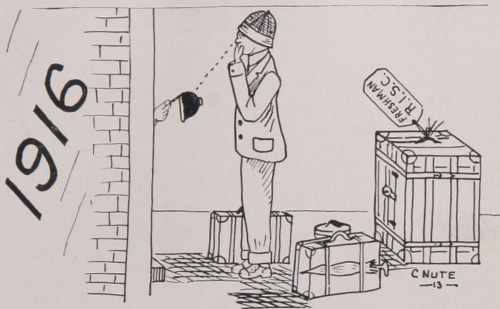


Irons (Coach), Harris, Hall, Nordquist, Belfit, Mowry, Coleman, Miller, Hunter, (Mgr.)

Lewis, Tabor, Rugg, Jackowitz (Capt.), Cloke, Nichols, Borden



Class of 1916



History of the Class of 1916

On Wednesday, September 20, 1912, Rhode Island State College threw open her portals to the largest Freshman Class that ever assembled at Kingston. True, some were a little tardy in entering, but the majority showed their worth by their punctuality. The Class numbers sixty-eight, forty-two in the engineering, one in the applied science, eighteen in the agriculture, and seven in the home economics course.

Early in the year, the class held a meeting and organized. The officers were elected for the year and they have already shown their capability in their respective positions.

In the Sophomore-Freshman Track Meet, which was held on November 4th, the Freshmen lost to the Sophs by a score of 66-48. Some of our men made very creditable showings and gave promise of good future track material.

In the Class Football game, however, the situation was reversed, the Freshmen winning for the first time in the history of the college, the score being 6-0. The 1916 team played a wonderful game for a team which was hardly organized, the players barely knowing each other.

The class of 1916 has given material help to athletics during its short life. Three of our members received their R. I. in football and two others in basketball.

Thus far, 1916 has given a good account of itself in the class-room and on the athletic field. It is not only the largest Freshman Class ever known at Rhode Island, but it has given promise of being one of the best.

1916 Class Roll

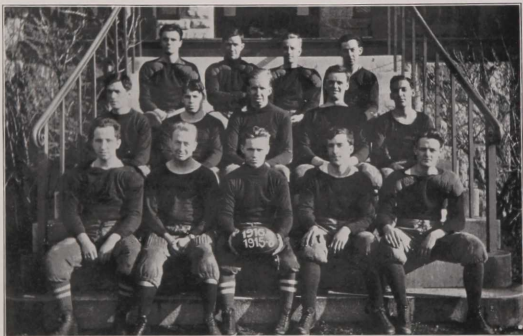
Officers and Members

Honorary Member, PROF. HERMAN CHURCHILL.

ROSSELL W. HENNINGER	President
DOROTHY I. BURR	Vice-President
DEAN B. FRASER	Secretary
PHINEAS M. RANDALL, JR.	Treasurer
ROLAND GOULD ALBRO	Peace Dale, R. I.
DANIEL GASKILL ALDRICH, <i>P. I. K.</i>	Georgiaville, R. I.
KENNETH ALLEN	Pawtucket, R. I.
HAROLD CONGDON ANTHONY, $\Delta A \Psi$	Newport, R. I.
WALKER EDMANDS BABBITT	Spencer, Mass.
WESLEY CROWELL BRIGHAM, <i>P. I. K.</i>	Pawtucket, R. I.
DOROTHY ISABELLE BURR	East Providence, R. I.
EVERETT AUGUSTUS CARLETON	Greenwood, Mass.
AMBROSE ROYLE CHANTLER, $\Delta A \Psi$	Pawtucket, R. I.
HELENA FRANCIS CLARKE	East Greenwich, R. I.
CLARENCE JOHN CONYERS, $\Delta A \Psi$	Providence, R. I.
GILBERT RALPH CORDIN, <i>P. I. K.</i>	Providence, R. I.
EMILIE MAY CURRAN	Pawtucket, R. I.
HENRY FALES DANIELS, ΘX	Pawtucket, R. I.
OLIVE MARGUERITE DATSON	Westerly, R. I.
WILFRED EASTERBROOKS	Wakefield, R. I.
ROBERT ALLEN EBBS, <i>P. I. K.</i>	Newport, R. I.
FRANK ALOYSIUS FARON, $\Delta A \Psi$	Woonsocket, R. I.
ERNEST GEORGE FIELD, $\Gamma \Delta \Sigma$	Providence, R. I.
RUTH ALLEN FLEAGLE	Baltimore, Md.
DEAN BLENUS FRASER ΘX	Brockton, Mass.
THOMAS WILLIAM FREEMAN, <i>P. I. K.</i>	Newport, R. I.
RALPH EARLE GLASHREEN, ΘX	Brockton, Mass.
FRANKLIN PERRY GODDARD	Newport, R. I.
GEORGE GAINER GUINNESS, $B \Phi$	Providence, R. I.
CLINTON DEXTER HAWKINS	Pawtucket, R. I.
KENNETH CHASE HAYWARD, $\Delta A \Psi$	South Easton, Mass.
ROSSELL WOODWARD HENNINGER, <i>P. I. K.</i>	Williamsport, Pa.
JAMES MURRAY HENRY, <i>P. I. K.</i>	Stonington, Conn.
EDWIN DOUGLAS HILL, $B \Phi$	Providence, R. I.
LEONARD STANLEY HOLLEY, $B \Phi$	Peace Dale, R. I.
ANNIE SARAH HOXIE	Canochet, R. I.

ROBERT CHARLES KIRK, $\Delta A \Psi$	Pawtucket, R. I.
SETH FREDERICK HADLEY LAGERSTEDT, ΘX	Brockton, Mass.
HOWARD MAXWELL LAITY	Wakefield, R. I.
EDGAR BABCOCK LEONARD, $B \Phi$	Providence, R. I.
LESTER WILLIAM LLOYD, ΘX	Chester, Mass.
ROBERT THOMAS LONGTON, ΘX	Brockton, Mass.
GEORGE EMILE LUSSIER, $\Delta A \Psi$	Woonsocket, R. I.
LEONARD HORMISDAS MAILLOUX, $\Delta A \Psi$	Woonsocket, R. I.
JOHN LAWRENCE McCORMICK	Glendale, R. I.
JOHN HENRY MCGILL, ΘX	Cranston, R. I.
JOSEPH EDWIN MCGILL, $\Delta A \Psi$	Woonsocket, R. I.
HENRY EDMUND MEDBURY, $\Delta A \Psi$	East Providence, R. I.
CHARLES IRVING MILNES, $B \Phi$	Providence, R. I.
PHILIP WILLIAM MORRISON, JR.	Greenwood, Mass.
HENRY DODGE MUNROE	Campello, Mass.
CHRISTOPHER JAMES O'BRYNE	Brockton, Mass.
THEODORE ANDREW PALMER	Hope Valley, R. I.
CLARENCE HOWARD PARKER, ΘX	Brockton, Mass.
JOHN PREMO	Wakefield, R. I.
CARLOS QUINTERO, $\Gamma \Delta \Sigma$	Panama, Panama,
BERTHA ADELAIDE RANDALL	Providence, R. I.
PHINEAS MUNSSELL RANDALL, JR., <i>P. I. K.</i>	Westerly, R. I.
ERNEST ELMER REDFERN, ΘX	Woonsocket, R. I.
HOMER RANSOM ROWELL	Groveland, Mass.
RUST SCOTT, $B \Phi$	Providence, R. I.
CHARLES EDWARD SEIFERT, $\Delta A \Psi$	Chepachet, R. I.
FRANK SHANAHAN	Newport, R. I.
CARLETON WEBB SHORT, $B \Phi$	East Providence, R. I.
KENNETH MATTESON SLOCUM, ΘX	Central Falls, R. I.
HAROLD BURLIN SMITH, $\Delta A \Psi$	Brockton, Mass.
WILLIAM EARL STEDMAN	Wakefield, R. I.
EDITH TINKHAM STEERE	Providence, R. I.
DANIEL LEO SULLIVAN	Providence, R. I.
RUSSELL HERNDON SWEET	Wakefield, R. I.
HAROLD WEBSTER TILLINGHAST	East Greenwich, R. I.
THOMAS FRANCIS VICTORY	Warren, R. I.
EARL WALMSLEY, ΘX	Anthony, R. I.
LESTER EARL WELLS	East Greenwich, R. I.
VINCENT CASE YOUNG, ΘX	Bristol, R. I.

1916 Football Team



Seifert J. E. McGill Redfern Milnes
Glasheen Parsons Medbury Ebbs Randall
Cordin Freeman Lagerstadt (Capt.) Conyers J. H. McGill

Special Students

FREDERICK OTTO ASPINWALL, ('14)	Pawtucket, R. I.
GEORGE HOLLAND BALDWIN, Δ A Ψ ('14)	Valley Falls, R. I.
WILLIAM EARL DODGE, X Φ (Brown)	Providence, R. I.
HOWARD LEE FORMAN	Brooklyn, N. Y.
ARCHIE COGGSHALL GODDARD, Θ X	Newport, R. I.
FRED JOSEPH GODIN, Θ X ('13)	Kingston, R. I.
JOHN LOFTUS	West Kingston, R. I.
JOHN LEO SULLIVAN, P. I. K. ('14)	Lonsdale, R. I.
EMANUEL TSAGARAKIS	Attleboro, Mass.
WILLIAM HENRY TULLY, Φ X ('14)	Peacedale, R. I.
WILLIAM HARRY WEBB, P. I. K. ('14)	Providence, R. I.

Short Course Students

HARRIET BUDLONG ALLEN	Providence, R. I.
DORRIS DEVIEGER ARNOLD	Washington, R. I.
ALBERT EDWIN BARBER	Peace Dale, R. I.
THOMAS FRANCIS BURKE	Providence, R. I.
FRANK ARTHUR CARROLL	Woonsocket, R. I.
MARK ANSELM CASSIDY	Woonsocket, R. I.
WILLIAM JAMES CHAMPLIN	Slocum, R. I.
HENRY BROWNING CHAPPELL	Saunderstown, R. I.
KENNETH ROSS DENNIS	Newport, R. I.
JOHN ADAMS DOLLIVER, Γ Δ Σ	Newport, R. I.
LAWRENCE KNIGHT EBBS	Newport, R. I.
CHESTER GOODRICH	Epping, N. H.
WILLIAM RUDOLPH HAAS	Newport, R. I.
JOHN ALBERT HARTMAN	Milford, Mass.
EARL JOSEPH HOPE, Δ A Ψ	Pawtucket, R. I.
ALENA FRANCIS HUBBARD	Woonsocket, R. I.
BENJAMIN HULL	West Kingston, R. I.
HAROLD CORBIN JONES	Providence, R. I.
JOHN FRANCIS LESLIE	Wakefield, R. I.
MICHAEL JOSEPH O'NEIL	Providence, R. I.
JOHN HAYWARD PARSONS	Kingston, R. I.
GORDEN FENN PYPER	Conimicut, R. I.
CARL HENRY SHEDD	East Providence, R. I.
HOWARD ERASTUS SWIFT	Lee, Mass.
EDMUND JOHNSON TANNER	Carolina, R. I.
WILLIAM LESTER TOURGEE	Peace Dale, R. I.
MARY ROBINSON WALLER	Washington, D. C.
HELEN M. WEIR	West Kingston, R. I.
MILLIE ELIZABETH WEIR	West Kingston, R. I.

Honors

Honors Awarded Commencement Day, June 21, 1912.

FINAL HONORS FOR FOUR YEARS.

HIGHEST HONORS.

HENRY NEWELL BARLOW.

ALLAE CORDELIA SLATER.

WALTER DOLL.

HIGH HONORS.

CARLE MUZZY BIGELOW.

SENIOR.

HENRY NEWELL BARLOW.

ALLAE CORDELIA SLATER.

GEORGE WILLIAM SHERMAN, JR.

WALTER DOLL.

FRED ALLEN RICHMOND.

CARLE MUZZY BIGELOW.

ARTHUR JOHN PATTERSON.

JUNIOR.

MARGUERITE WHITE ELKINS.

DOROTHY DEARBORN ELKINS.

SUSIE STANTON WOOD.

CLARENCE ELMER BRETT.

IRVING CALVARY MITCHELL.

SOPHOMORE.

OLIVE NICHOLSON.

HELEN WHEELER FORD.

LORENZO FOSTER KINNEY, JR.

MYRON ANGELL HAWKINS.

HAROLD WILLIAM BROWNING.

SARAH ALICE NICHOLSON.

JAMES HILTON ALDRED.

FREDERICK OTTO ASPINWALL.

FRESHMAN.

NORMAN HARRISON BORDEN.

JOSEPH ELTON NICHOLS.

WESLEY CLIFTON MILLER.

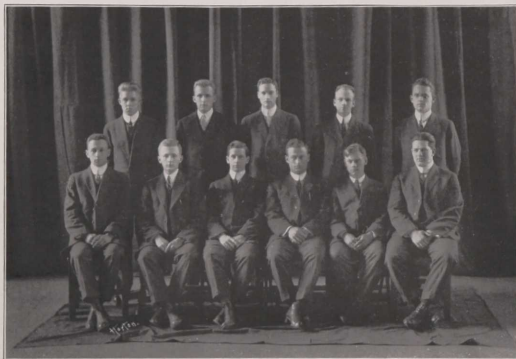
HENRY HARRINGTON BROADFOOT.

CURTIS WOLCOTT GATES.

ATHLETICS



CNOTE
— 5 —



Athletic Board

Browning H. Reiner Esty Whittaker Baxter
Cohen W. Reiner Collins Webb Hawkins Sherwin

Athletic Association

W. HARRY WEBB, '14	<i>President</i>
CEDRIC H. COLLINS, '14	<i>Vice-President</i>
JOHN BARLOW	<i>Secretary and Treasurer</i>
JAMES R. ESTY, '14	<i>Recording Secretary</i>
WALDO REINER, '13	<i>Football Manager</i>
HERBERT REINER, '14	<i>Assistant Football Manager</i>
BENJAMIN COHEN, '13	<i>Basketball Manager</i>
HAROLD W. BROWNING, '14	<i>Assistant Basketball Manager</i>
LEROY M. SHERWIN, '14	<i>Baseball Manager</i>
FRANK H. BAXTER, '14	<i>Assistant Baseball Manager</i>
MYRON A. HAWKINS, '14	<i>Track Manager</i>
LEROY A. WHITTAKER, '14	<i>Assistant Track Manager</i>

Athletic Advisory Board

MARSHALL H. TYLER	WALDO REINER
SAMUEL H. WEBSTER	BENJAMIN COHEN
JOHN BARLOW	MYRON A. HAWKINS
	LEROY M. SHERWIN

Wearers of the R. I.

Football

JOHN L. SULLIVAN	Captain
WALDO REINER	Manager*
FRANK H. BRIDEN	ROSWELL W. HENNINGER*
WESLEY C. BRIGHAM*	ALBERT E. MACINTOSH*
SETH A. CALDWELL*	LEONARD H. MAILLOUX*
HENRY E. DAVIS*	LEROY B. NEWTON
JOHN C. GLYNN*	MILTON H. PRICE
W. FRANK HANLIN* EARL C. WEBSTER*	LEROY M. SHERWIN

Basketball

WILLIAM H. TULLY	Captain
BENJAMIN COHEN	Manager*
HAROLD W. BROWNING	Assistant Manager*
FREDERICK O. ASPINWALL	FRANK J. LENNOX
THOMAS W. FREEMAN*	JOSEPH E. NICHOLS*
VINCENT C. YOUNG*	

Baseball

FRANK H. BRIDEN	Captain
CHARLES H. LARRIN	Manager
CARL L. COLEMAN*	LEROY B. NEWTON
WALTER DOLL	MILTON H. PRICE
FRANCIS J. FOLEY*	WILLIAM F. REDDING
ROYAL C. HUDSON*	JOHN L. SULLIVAN
FRANK J. LENOX*	DAVID E. WARNER
FRANK H. MEYER*	W. HARRY WEBB*

Track

HENRY N. BARLOW	Captain
W. HARRY WEBB	Manager
FREDERICK O. ASPINWALL	MYRON A. HAWKINS
CARL L. COLEMAN	WALTER C. IRONS
WILLIAM E. DODGE*	HERBERT REINER

*Denotes R. I. won for the first time this last season.

'Varsity Football



Reiner (Mgr.), Caldwell, Brigham, Mailloux, McIntosh, Hanlin, Bingham (Coach)
Webster, Davis, Sullivan (Capt.), Briden, Henninger
Price, Newton, Sherwin, Glynn

Football



CAPT. SULLIVAN.

Responding to a call from the manager an enthusiastic squad appeared on the campus September 9th and donned their football suits to practice for a stiff schedule. But five of the last year's team returned this year. They were Captain Sullivan, Sherwin, Newton, Price and Briden. However, the last year's second team and the freshman class furnished the remaining positions with competent material. The squad was under the direction of R. W. Bingham, Jr., Brown, 1911. By Sept. 21 the team was in good condition to journey to Amherst to meet their old rivals, M. A. C., defeating them by the score of 7-0.

Massachusetts won the toss and received the kickoff, but was forced to punt after three unsuccessful attempts to make first down. Sullivan ran the ball back twenty yards. On the first down Sherwin made five yards through left tackle. Sullivan carried the ball around right end for a long gain. Sherwin and Newton both made gains through the line, bringing the ball to Massachusetts' twenty yard line. Sullivan ran around left end for a touch down and kicked the goal. Rhode Island had a much lighter team than her opponents, but all through the first two periods she played a much faster game and made some long gains. Near the end of the second period Sullivan drop kicked from Massachusetts' forty yard line, the ball striking the upright two feet above the cross bar. During the third period the ball was in the center of the field all the time with the exception of the last few minutes, when Rhode Island rushed the ball to Massa-

chusetts' twenty-five yard line. Massachusetts came back strong in the fourth period, and by a series of line plunges through the guards twice rushed the ball to Rhode Island's one yard line, but here Rhode Island showed her do-or-die spirit, and here held her opponents for four downs twice. The time was called. The whole Rhode Island team showed up well for the first game.

A week later Rhode Island easily disposed of the strong Pawtuxet A. C. team. R. I.'s goal was never in danger and the team filed up a score of 20 to 0. The team showed a marked improvement over the previous week.

On October 5th Rhode Island met with her first defeat when she met Brown, on Andrews Field. The final score after a plucky fight on a dusty gridiron, was 14-0. R. I. won the toss. Kratz kicked off to Newton, who carried the ball back twenty yards. By shift plays Rhode Island succeeded in tearing the Brown line and rushed the ball to her 30 yard line. Here Brown held and Sullivan tried for a goal from the field. The oval missed by a narrow margin. All through the first period the Brown team was outclassed and the playing was in her territory. The period ended with the ball on Brown's thirty yard line. The second period was played with two of the Rhode Island regulars out of the game. For a time the ball seesawed in the center of the field. Brown fumbled on her third down. Price recovered the ball and carried it to her five yard line. This time Rhode Island fumbled and Brown carried the ball the length of the field for a touchdown. Ashbaugh kicked the goal. Rhode Island received the kickoff on her ten yard line and carried it back ten yards. After two downs the whistle blew for half time. Score—Brown 7, R. I. 0.

The second half opened with Brown kicking to Sullivan on his fifteen yard line. He carried the ball to the forty yard line, where it was out of bounds. Rhode Island was forced to punt. Crowther ran the ball back nearly to the place where it was kicked. Both teams played a punting game. Near the end of this period Brown rushed the ball down the field, where Henry placed it between the goal posts for the second touchdown. Ashbaugh kicked the goal. The period ended with the men lined up for a kickoff. The fourth period opened with Sullivan kicking to McLean, who took the ball back ten yards, but lost it when tackled. Here Rhode Island put up a game fight to reach her opponents' goal line. She was forced to punt, however, and Crowther received the ball, but was downed in his tracks. Brown advanced the ball to Rhode Island's forty yard line. Ashbaugh tried a goal from placement, which fell short. Sullivan ran the ball back thirty yards and after two downs punted. Brown tried two line plunges and the whistle ended the game.

On October 12th Rhode Island suffered its second defeat of the season at the hands of the strong aggregation representing the Pine Tree state. The game was played in a light rain, upon a soggy and slippery field. The latter proved to be a great hindrance to our team, for it did away with much of the open style of playing, and eliminated our end running to a great extent. Rhode Island started off well and had things her own way in the first period of the game. Long runs by Sherwin and Sullivan brought Rhode Island within striking distance. Here, however, Maine held, and soon came into possession of the ball. By repeated line plunging the Maine team carried the ball down the field and scored. During the remainder of the game the ball see-sawed up and down the field, Maine scoring in the third period and again in the last minute of play.

Tired out from the tedious trip to Maine and in a crippled condition, the boys journeyed to the Metropolis and surprised Fordham University by taking a 6-0 victory. Both teams seemed unable to gain ground, with the odds in Rhode Island's favor, Sullivan tallying two out of three tries for a drop kick.

A week later Rhode Island came back strong and swamped Worcester Polytechnical Institute representation on college field, 27-0. The home team won the toss and received the ball on its ten yard line. With good interference the ball was carried to the middle of the field. A couple of end runs and some plunging, mostly through left tackle, gave Rhode Island her first touchdown, Sherwin carrying the ball over. The goal was missed. Worcester received the kick. Kelly carried the ball back five yards. Worcester could not gain, so punted on the fourth down. Sherwin carried the ball to the thirty yard line. The whistle ended the first period. The second period opened with Rhode Island plugging Worcester's line. With the ball on the opponents' ten yard line Sullivan carried the ball around right end for the second touchdown. Sullivan kicked the goal. Worcester received the kick again and the play was carried on again in her territory until the end of the second period. Score—R. I. 13. W. P. I. 0.

Worcester received the ball in the third period and was forced to punt. Rhode Island carried the ball to the opponents' twenty-five yard line, but was held for downs. After three downs W. P. I. punted to Sullivan, who brought the ball back to the forty yard line. From here R. I. carried the ball down the field for a third touchdown, Newton carrying the ball through right tackle. Sullivan kicked the goal. Rhode Island again kicked off and downed the Worcester man on his twenty yard line. Again Worcester punted to the middle of the field. Sherwin carried the ball to her forty yard line. The whistle ended the third period. The fourth period saw Rhode Island plugging hard and it was

only a short time before Sherwin carried the ball over for the fourth touchdown of the game. Sullivan kicked the goal. Worcester received the kick, only to be forced to punt to Rhode Island's forty yard line. Sullivan carried the ball around left end for forty-five yards. Here Worcester held Rhode Island for downs. After three downs Worcester punted and Rhode Island was steadily working for another touchdown when the game ended.

In a one-sided, though hard fought game from beginning to end, Rhode Island again defeated their keen rivals, New Hampshire State College, by the score of 25 to 0, on Saturday, November 2. New Hampshire fought hard to stave off defeat, but the powerful line plunges of Sherwin, the brilliant and spectacular end runs of Newton and long gains by Price were too much for them. With the ball on New Hampshire's 40 yard line, Sherwin hit the line hard and plowed through a broken field for a touchdown. Newton brought the crowd to its feet when, with 25 yards to make on the last down, he circled right end for a 35 yard run. Captain Sullivan made two of the prettiest drop kicks ever seen at the athletic field, one being from the 40 yard line and the other from the 45 yard line. Brackett and Hobbs played a fine game for New Hampshire, the former making a run of forty yards, while the latter tore off a pretty 35 yard run.

The first score came after the first few minutes of play. New Hampshire kicked to Rhode Island's 25 yard line. Price carried the ball through left tackle for ten yards. Sherwin plugged for five more. Newton then circled right end for 15 yards. Rhode Island carried the ball to New Hampshire's 35 yard line, where they were held for downs. Sullivan's drop kick failed. New Hampshire punted to Newton on the New Hampshire 23 yard line. Newton ran the ball back five yards. Sullivan took the ball around end for 35 yards. Newton advanced it 12 more. Sherwin made four yards through right tackle. Price carried the ball to New Hampshire's two yard line, where Newton carried it over for a touchdown. Sullivan missed the goal. Sullivan kicked off to New Hampshire's one yard line. Hobbs ran the ball back thirty yards. Bissel could make no gain through guard. Brackett made thirty yards around end, but fumbled the ball and it was recovered by Davis for Rhode Island. Newton on the first play made 25 yards around the right end. New Hampshire then held Rhode Island to no gain. Sullivan then made a pretty drop kick from New Hampshire's 40 yard line. Score at the end of the first half—Rhode Island 9, New Hampshire 0.

In the third period Sullivan made his second drop kick, which was made from New Hampshire's 40 yard line. In this period Sherwin carried the ball

through guard 40 yards for a touchdown. Sullivan missed the goal. In the last period Sullivan tried a drop kick from New Hampshire's 45 yard line, but it missed by just a few feet. To many of the spectators it was a question as to whether or not it went over. New Hampshire put the ball in play on her own twenty yard line. Jones was thrown back for a loss of 19 yards. New Hampshire punted to her own 30 yard line. Newton carried the ball around end for 15 yards. Sullivan, on a trick play, made five yards through guard. Price carried it two yards more. Newton carried it to New Hampshire's half yard line. Price then carried the ball over the line for a touchdown.

Owing to cancellation on the part of Boston College, a game was played with Fort Greble. Coach Bingham used the second team during the greater part of the game. The game was loosely played, but gave the second team a good chance to try out against strong opponents. The final score was 14-6.

The team closed its season on Ohio Field, N. Y., November 16, losing to the powerful N. Y. U. team, 14-7. Rhode Island's touchdown came after six minutes of play. Sullivan punted into New York's territory and Henninger recovered the ball. Sullivan carried it around left end for a touchdown and then kicked the goal. The first period opened with New York kicking to Henninger, who carried it to Rhode Island's forty yard line. By line plunging and two end runs the ball was carried to New York's 30 yard line. Here Newton carried the ball around right end for a touchdown, but it was not allowed. Rhode Island was penalized 15 yards for holding. Sullivan circled left end for a touchdown and kicked the goal. New York kicked to Sullivan, who carried the ball to the middle of the field. New York held for downs and then steadily pushed the ball down the field for a touchdown. Dutcher kicked the goal. Sullivan kicked to New York and the whistle ended the period with the ball on New York's 30 yard line. During most of the second period the ball seesawed back and forth in the middle of the field, but towards the end New York kicked and recovered the ball on a fumble. Two line plunges and a forward pass gave her the second touchdown. Dutcher kicked the goal. New York kicked to Rhode Island as the whistle ended the period.

During all of the second half the ball was kept going back and forth in the center of the field with the favor on New York's side. Rhode Island was handicapped in this half by the loss of Mailloux and Davis, both of whom wrenched their ankles. When the whistle ended the game the ball was on Rhode Island's 40 yard line. The game was the hardest Rhode Island had this year, being outweighed by at least 20 pounds to the man. Every man showed a remarkable gameness and fought until the end.

The team leaves a remarkable record this past season considering that it was necessary to develop almost an entirely new line. In every game the fellows were outweighed man for man. In spite of this they could be counted upon from the beginning to the end of the games, and barring the numerous injuries, the season may be considered one of the most successful in the history of Rhode Island State College Athletics.

The Scores

		Rhode Island	Opponents
September 21	M. A. C. at Amherst	7	0
September 28	Pawtuxet A. C. at Kingston	20	0
October 5	Brown at Providence	0	14
October 12	U. of Maine at Orono	0	18
October 19	Fordham U. at Fordham, N. Y.	6	0
October 26	W. P. I. at Kingston	27	0
November 2	New Hampshire at Kingston	25	0
November 9	Fort Greble at Kingston	14	6
November 16	N. Y. U. at New York	7	14
		106	52



Varsity 2d Team

Varsity Coaches



ROBERT W. BINGHAM
Football



FRANK J. BEAUMONT
Baseball



GEORGE R. COBB
Head Coach



MARSHALL H. TYLER
Football



J. STANLEY BEAMENSDERFER
Track



LEONARD A. MAYNARD
Basketball

Basketball Team



Browning (Asst. Mgr.) Cohen (Mgr.) Aspinwall Maynard (Coach)
Lennox Nichols Tully (Capt.) Freeman Young

Basketball



CAPT. TULLY

Considerable difficulty was experienced this year by the basketball manager in arranging his schedule, as most of the colleges in the east are dropping this line of athletics. However, we had a successful season, winning four out of seven games played. The team lived up to its old standard and won all of the home games. Three positions were open at the beginning of the season and these were ably filled by Lennox, Nichols and Freeman. Capt. Tully and Aspinwall played in their old places at forward and center, respectively.

After several weeks of hard practice, the team met Renselaer Polytechnic Institute at Kingston and easily won by a score of 29-11.

The game opened with both teams playing a guarding game and Renselaer having a little the better of it, and scoring five points to two made by Rhode Island. This was only for a short time, however. About the middle of the half Nichols carried the ball down the floor and shot a pretty basket, which was soon followed by another, Aspinwall doing the work. This seemed to spur Rhode Island on and at the end of the half she led by a score of 9-6.

Rhode Island had things all her own way in the second half, every man on the team playing a hard and fast game with no letup. Rensselaer on the other hand couldn't seem to stand the pace and was completely outclassed. Lennox and Nichols, along with Captain Tully played all over the floor, while Aspinwall got the jump on his man every time at center and this figured largely in the success of the team. Freeman had his man completely boxed every minute of the game and deserves much credit. When the final whistle blew the score stood 29 to 11.

Rhode Island won its second game of the season Saturday, January 4, when Pratt Institute was defeated on the latter's court in Brooklyn, New York, by the score of thirty-five to thirty-one. As the score would naturally indicate, the game was a close one, and it was not until the last two minutes of play that Rhode Island won the game.

Pratt started the scoring when Whitehead shot a foul for the home team. Another foul on Rhode Island gave Pratt another point, but Lennox shot a basket and tied the score. Rhode Island had the advantage of the Brooklyn team in the first half, the score at the end of the half being 15-13 in favor of the visiting team.

Although Rhode Island held the score at all times of the first half, the reverse was quite true in the second half up to the last five minutes of play. The Brooklynites came back in the second half with a determination to win, and before it could hardly be realized, the score stood 26-21 in their favor.

Seeing the tables turned against her, Rhode Island took a sudden spurt and managed to tie the score. With but two minutes to play, the score stood 31-31. Here is where the superiority of the team work of Rhode Island was the most evident. By some striking passing, Aspinwall netted two consecutive baskets, making the score 35-31 in favor of Rhode Island when the whistle blew.

On January 11, the team met its first defeat of the season, losing to Wesleyan, the New England champions for the last two years, by a score of 56-23.

Wesleyan was represented by practically the same team that has defended honor during the past three years. The showing made by Rhode Island deserves more credit than the score would probably lead one to think.

Although outplayed from the very start, every man on the Rhode Island team played for all that was in him, and was not willing to consider himself defeated until the game was ended. Rhode Island scored twelve points during the first half and eleven during the second, while Wesleyan netted twenty-eight point during each half.

Probably the fastest game of basketball that has ever been played in Kingston was played on January the fifteenth, when our boys defeated New Hampshire 24-23.

The game was the most exciting that has been seen on the home floor for some time and it was neither team's game until the end. With only forty seconds to play and New Hampshire leading by a single point, Lennox dribbled the ball the length of the floor and shot a pretty basket, winning the game for the team. Both teams showed fine playing at times, although that of New Hampshire was more consistent.

Rhode Island has never lost a game on the home floor, but with the score 14 to 9 against them at the end of the first half it looked as if the good record was to be broken. Rhode Island started things in the second half by scoring two baskets soon after the whistle and forging ahead a few minutes afterwards. New Hampshire, not to be outdone by the fast work of the home

team, strengthened and time and again the crowd was brought to their feet in the excitement.

The Saturday following, Rhode Island journeyed to Williamstown, Mass., and met defeat at the hands of the Williams boys. Because of the smallness of the court our aggregation were unable to get started during the first part of the game, but came back strong in the last half. The accuracy with which the home team were able to shoot baskets is the main reason for the final score standing as it did, 51-14.

In the roughest basketball game held at Kingston this season, Rhode Island defeated the Yale Rovers, January 25, by a score of 29 to 23. Although there was strenuous work in both halves, the players put up a clean contest and excitement ran high from the start to the finish.

The game was a see-saw in the opening period, but when the whistle blew for intermission, Rhode Island was ahead, 13 to 12. The Rovers spurted in the second half, and by some clever basket shooting, tied the score at 19 points each about eight minutes before the final whistle.

The Rhode Islanders opened the throttle, and forcing the pace, broke the tie and piled up 10 points, while the visitors were collecting four. Freeman hurst his ankle in this half and was replaced by Young.

On New Hampshire's floor, Rhode Island fell to defeat on Saturday, February 15, after forty minutes of hard-fought basketball with the Northern state team joyously rushing off the floor with the final honors.

New Hampshire started scoring on an easy basket by Thompson, which was followed by Rhode Island's first point on a foul caged by Lennox, who quickly followed his free trial by a goal from the floor.

This was the only time during the game when R. I. had the lead. The first half ended with the score 20-9 with New Hampshire on top.

The second half opened with New Hampshire turning in a succession of baskets, but at this point Rhode Island tightened and cut the lead to ten points. The score wavered during the remainder of the game with New Hampshire always in the lead, and when the gong sounded in the end, the score stood 40-28.

THE SUMMARY.

	R. I.	OPP
Dec. 14. Renssalaer P. I. at Kingston.....	29	11
Jan. 4. Pratt Institute at Brooklyn	35	31
Jan. 11. Wesleyan at Middletown	23	56
Jan. 15. New Hampshire at Kingston	24	23
Jan. 18. Williams at Williamstown	14	51
Jan. 25. Yale Rovers at Kingston	29	23
Feb. 15. New Hampshire at Durham	28	40
	182	235

'Varsity Baseball Team



Larkin (Mgr.) Webb Foley Cobb (Coach)
Meyer Redding Hudson Coleman
Newton Doll Sullivan Briden (Capt.) Price Lennox

Baseball



CAPT.-ELECT NEWTON

Basketball over, the attention in athletics was immediately turned to baseball. Capt. Briden and Coach Cobb issued a call for new material, which was enthusiastically responded to. The veterans on the squad were Capt. Briden, Doll, Newton, Price, Sullivan and Redding, all out for their old positions. For four weeks daily practice was held in Lippitt Hall. The first cut in the squad was made the first week in April and the remaining men were given a final stiff practice for the opening game with Bowdoin on April 9, 1912.

Owing to unfavorable weather conditions, the squad was not in the best of condition to meet such able opponents. The student body as during the rest of the season was out in full force to cheer them on. The game was well played and interesting throughout.

Meyer started pitching for Rhode Island and up to the eighth certainly pitched fine ball. He pulled out of several bad holes, once with the bases full. He was relieved by Coleman in the eighth, after Bowdoin had scored three runs.

Rhode Island scored on a hit, a stolen base and an error.

The batting of our varsity was lamentably weak, only four hits being made. Foley's catching and throwing were fine and Sullivan's throw to the plate, which caught the runner, was a "corker."

April 13 saw Tufts succeed in downing R. I., but not until fourteen innings had been played.

At the beginning of the ninth our varsity had a lead of 3 to 1, but Tufts tied the score in the ninth and went out in the fourteenth.

Coleman pitched a fine game, holding the opposing batsmen hitless for

eight innings and to six hits in the whole game. He clearly outpitched Adams, the ex-Brown star, who was touched up for nine hits.

Rhode Island started the scoring in the first inning. Sullivan drew a pass, Price sacrificed him to second, and he scored on a fine two-bagger by Doll. Doll stole third and scored on an error by Qualters, the Tufts' third baseman.

Tufts got one back in the second on a wild throw by Foley over first base.

There was no more scoring until the seventh when Coleman walked. He immediately stole second and scored on a fine hit by Sullivan.

Tufts tied the score upon an error and a couple of hits.

In the eleventh and thirteenth Rhode Island threatened to score—the necessary hit was lacking. Coleman, on the other hand, kept Tufts well in check until the fourteenth.

In the last of the fourteen the first Tufts batsman "slammed" out a fine three-bagger. Two men were retired before Lowry, the Tufts center fielder, came along with the necessary hit, which won the game.

On April 20 the strong New Hampshire representation arrived at Kingston to carry away with them a 4-0 scalp-lock. A very strong wind blew across the field bothering both teams. In spite of this, however, the game was very exciting throughout.

The boys from the White Mountain State started things by pushing a run over the plate in the first inning. From this time to the seventh inning the game was closely contested, both teams having men on bases. The timely stick work was lacking, however, and no score was made.

In the first half of the seventh New Hampshire came back strong and scored three runs on as many hits and an error, obtaining a lead of four runs.

Rhode Island threatened to score in both the eighth and ninth innings, but were shut off by good fielding on the part of New Hampshire.

After winning from Harvard on Tuesday and holding Brown to a 3-2 score on Wednesday, the Bates College nine won from the Rhode Island nine Thursday afternoon after 11 innings. The game was one of the fastest ever seen on the home team's grounds and was favored with the best of weather conditions.

The Bates team displayed great team work. Time and again they stopped what looked like sure hits and were freely applauded by the Rhode Island rooters. At the bat they were strong, getting nine hits off Coleman. Rhode Island team played a fast fielding game but were weak with the stick, Redding being the only man to connect for a hit.

Rhode Island scored a run in the third inning. With one down, Redding lined out a pretty single to right field and stole second on the first ball

pitched. Coleman, the next man, drew a pass, Sullivan hit a hard one to short, sending Redding to third. Coleman was just out at second and an attempt to get Sullivan at first resulted in a wild throw, Redding scoring and Sullivan going to second. The next batter flied out, shutting off further scoring.

In the fifth Cody of Bates was hit by a pitched ball, went to second on Danahy's single and scored when Keaney and Lindquist both sacrificed.

In the 11th Griffen hit safe. Cody followed with another hit. Then with two down Keaney hit a Texas Leaguer over third base, scoring Griffen and giving Bates the game.

Following a week of stiff practice, the team lined up against the Norwich University aggregation on the college field the next Saturday.

It was anybody's game until the last man was put out. Rhode Island nearly turned a defeat into victory in the ninth, but Murray's catch on Foley's Texas Leaguer saved the game for Norwich. Sullivan and Doll played exceedingly well, while Lennox, Burwell, Murray and Shepard played good ball.

Rhode Island started off by scoring a run in the first inning. Doll, the first man up, singled to middle. Sullivan followed with a pretty bunt along the first base line. Foley struck out and Newton sent up an infield fly, putting Doll out. With Sullivan on second and Newton on first, Lennox singled to right, scoring Sullivan. Briden hit to second but was put out.

In the second Rhode Island scored twice. Hudson walked and was sacrificed to second by Coleman. Doll hit, scoring Hudson. Sullivan singled to left, scoring Doll. Foley fanned. Score—Rhode Island 3, Norwich 0.

Norwich came back strong in the third. Munsel was passed, Parkman bunted in front of the plate, and an error by Lennox on Foley's throw to second let Munsel reach third. Burwell singled, scoring Munsel, and Murray's two-bagger sent Burwell over the plate for another score. Belyia struck out. Rhode Island 3, Norwich 2.

Lennox made a pretty one-hand stop in the fifth, getting his man at first. Rhode Island scored again in this inning. Doll reached first on an error by Thompson. Sullivan and Foley both bunted safe, Newton flied out and Lennox sacrificed, scoring Doll.

In the sixth Norwich took advantage of Rhode Island's slow playing and scored three runs. Burwell, the first man at bat, walked. Murray singled, Belyia hit a Texas Leaguer between middle and right, which should have been an easy putout. This scored Burwell and Murray. Hudson's throw to the plate took a bad bound, letting Belyia reach third. O'Dowd sacrificed

along the third base line, scoring Belyia. Keegan flied out. Score—Rhode Island 4, Norwich 5.

Sullivan's throw from left to second, catching Burwell while trying to stretch a single into a two-bagger, was perfect.

Rhode Island tied the score in the eighth when Lennox was passed, stole second, and scored on Briden's pretty single to middle.

In the first half of the ninth Shepard hit safe for Norwich, went to second on Burwell's sacrifice, and to third on an error. The next batter hit to Doll, who threw to the plate to shut off the run, but the runner slid into Foley, causing him to drop the ball. In sliding, the runner's head struck Foley's knee and he had to be carried off the field.

Rhode Island tried hard for a score in her half of the ninth. Webb walked. Coleman struck out. Webb was put out in trying to steal second. Doll reached first on an error by Shepard and went to third on a wild throw over first. Keegan let Sullivan walk. He at once stole second. Foley hit a Texas Leaguer over third but a good catch by Murray ended the game.

On Friday, May 10th, Rhode Island met Brown on Andrews Field in Providence. After a hard fight on both sides, Brown came out of it with a score of 3-0 in their favor.

Both Cram and Meyer were pitching in mid-season form, the former allowing three hits and the latter holding Brown's heavy batting team to four hits, two of which were of the scratch order.

Brown's first score came in the third inning, when R. Nash hit safely to right field. Cram sacrificed and Foley threw wild in attempting to catch the man at first, allowing Brown's center fielder to come all the way home.

In the fifth, K. Nash drew a base on balls, made second on a sacrifice hit, and scored on Foley's second error.

In the next two innings both teams went out in order and each side gave a fine exhibition of fielding. In the eighth Brown added her last run. After Cram and Crowther had been retired, K. Nash singled to right. Reilly, who ran for Nash, stole second and tallied on Loud's smashing three-bagger to right center. Henry, the next man up, hit to Lennox, but was thrown out.

Returning to Kingston, R. I. easily defeated Boston University 20-0 on the following day. The home team piled up a total of 23 hits, but the opponents were held at the mercy of Coleman being able to get but one stray hit.

A week later Rhode Island easily defeated Worcester Polytechnic Institute on the home field, by the score of 19 to 4. The Rhode Island batters hit the ball to all corners of the field for a total of 21 hits. Doll and Foley led in the

hitting, each getting four hits, the former getting a three-bagger, two two-baggers and a single.

In the first two innings both teams shaped up well and it looked as if it would be a hard contest, but in the third Rhode Island landed on the Worcester pitcher and secured five runs. From then until the end of the game the winners had everything their own way.

This was a very fitting close for the season and showed that the boys, though defeated early in the schedule, were able to come back and win a few games for R. I.

Scores

	R. I.	Opp.
April 11. Bowdoin at Kingston.....	1	5
April 13. Tufts at Medford.....	3	4
April 20. New Hampshire at Kingston	0	4
April 25. Bates at Kingston	1	2
May 4. Norwich at Kingston	5	6
May 10. Brown at Providence	0	3
May 11. Boston University at Kingston	20	0
May 18. Worcester Polytechnic	19	4
	49	28

'Varsity Track Team



Webb (Mgr.), Kinney, Weston, Brindle, Aspinwall, McIntosh

Slocum, Barlow, (Capt.), Reiner

Coleman, Hawkins, Dodge, Mason, Irons, Benson

Track



CAPT. IRONS.

Considerable interest was shown in track last spring. Although the dual meet with New Hampshire May 25th was lost, material developed will in all probability produce for R. I. a much stronger team this year. A very keenly-contested inter-class meet was held in June which resulted in a sweeping victory for 1914. This fall a Sophomore-Freshman meet was held to interest the new men especially. The result was in favor of the Sophs. A fast relay four has been developed which means more victories.

The New Hampshire Meet

To our misfortune last spring several of our men were unable to enter the New Hampshire meet on account of injuries. Capt Barlow again proved his ability as a runner by taking the 440 and the 880. In the shot put R. I. took all three places, while in the hurdles Irons showed himself superior. The summary of events is as follows.

<i>Event.</i>	<i>Winners</i>	<i>Time, Height or Distance.</i>
Mile-Run	1st. SANBORN	5 min. 2 2-5 sec.
	2d. KINNEY	
	3d. POHLSON	
440-Yard Run	1st. BARLOW	54 4-5 sec.
	2d. TUCKER	
	3d. COLEMAN	
120-Yard Hurdle	1st. IRONS	19 sec.
	2d. REED	
	3d. DAVIS, of R. I.	

The New Hampshire Meet—Continued

<i>Event.</i>	<i>Winners.</i>	<i>Time, Height or Distance</i>
100-Yard Dash	1st DAVIS, of N. H.	10 1-2 sec.
	2d. DODGE	
	3d. SWAZEY	
Two-Mile Run	1st SANBORN	10 min. 65 sec.
	2d. POHLSON	
	3d. WATSON	
880-Yard Run	1st. BARLOW	14 3-5 sec.
	2d. TUCKER	
	3d. REINER	
220-Yard Hurdle	1st. IRONS	29 sec.
	2d. REED	
	3d. BEACH	
220-Yard Dash	1st. DAVIS, of N. H.	24 sec
	2d. DODGE	
	3d. SWAZEY	
16-Pound Shot	1st. ASPINWALL.	33.7 ft.
	2d. SHERMAN	
	3d. AHRENS	
Pole Vault	1st. HAM	9 ft. 8 in.
	2d. DAVIS, of N. H.	
	3d. NEWTON and BRINDLE tie	
High Jump	1st. MASON	5 ft. 4 in.
	2d. HAIN and BEACH tie	
16-Pound Hammer	1st. BEACH	98.3 ft.
	2d. McLUCUS	
	3d. AHRENS	
Broad Jump	1st. BEACH	18.37 ft
	2d. BENSON	
	3d. DAVIS, of N. H.	



Beamensderfer (Coach), Hawkins (Mgr.), Coleman, Dodge, Reiner, Whittaker (Asst. Mgr.)
Tabor, Kinney.

Relay Team

On February 8, 1913, the relay team defeated New Hampshire at the Mechanics Pavilion in Boston in a close and interesting race. This makes the third successive win for Rhode Island.

On February 22nd they met the Massachusetts Aggies at the State Armory in Providence and lost by about two yards in a fast and exciting race. The boys from the Bay State had had more experience in taking the banks and this was the chief reason for their victory over Rhode Island. The boys deserve a good deal of credit for the work done this year. The new board track will be of assistance to them in the future.

Annual Spring Track Meet

The annual spring track meet was held on the college field on Class Day. It was a balance of excitement throughout the most of the contest, but 1914 forged ahead rapidly toward the close and finished with 43 points to her credit to 28 by 1915, 23 by 1913, and 23 by the specials. The events were as follows:

Running Broad Jump	1st. HAWKINS, '14	19 ft. 3 in.
	2d. DODGE, Special	
	3d. NORDQUIST, '15	
Running High Jump	1st. MASON, '14	5 ft.
	2d. BRINDLE, Special	
	3d. NEWTON, '14	
Pole Vault	1st. NEWTON, '14	8 ft. 8 in.
	2d. LENOX, '15	
	3d. BRINDLE, Special	
Shot Put	1st. ASPINWALL, '13	32 ft. 1 in.
	2d. AHRENS, '13	
	3d. MCINTOSH, '15	
Hammer Throw	1st. AHRENS, '13	80 ft. 8 in.
	2d. THAYER, '14	
	3d. FINCH, '14	
100-Yard Dash	1st. DODGE, Special	10 2-3 sec.
	2d. TABOR, '15	
	3d. COLEMAN, '15	
220-Yard Run	1st. DODGE, Special	24 2-5 sec.
	2d. TABOR, '15	
	3d. COLEMAN, '15	
440-Yard Run	1st. COLEMAN, '15	54 3-5 sec.
	2d. HAWKINS, '14	
	3d. NEWTON, '14	
880-Yard Run	1st. REINER, '14	2 min. 15 sec.
	2d. KINNEY, '14	
	3d. COLEMAN, '15	
One-Mile Run	1st. KINNEY, '14	5 min. 11 2-5 sec.
	2d. FINCH, '14	
	3d. J. MILLER, '15	
Two-Mile Run	1st. J. MILLER, '15	12 min. 14 sec.
	2d. KINNEY, '14	
	3d. BROWNELL, '15	
120-Yard Hurdles	1st. IRONS, '13	19 2-5 sec.
	2d. NORDQUIST, '15	
	3d. BRINDLE, Special	
220-Yard Hurdles	1st. IRONS, '13	29 1-5 sec.
	2d. DODGE, Special	
	3d. MCINTOSH, '15	

First Annual Fall Sophomore-Freshman Meet

The first autumn inter-class meet was held on the college field November 4th. Much interest was shown by both the 1915 and 1916 classes, and were well represented. The final score was 68 to 47 in favor of the Sophomores. Some of the material developed looks good for the Varsity this spring. The summary of events is as follows:

220-Yard Dash	1st. COLEMAN, '15	
	2d. TABOR, '15	
	3d. PARKER, '15	
440-Yard Dash	1st. COLEMAN, '15	
	2d. REDFERN, '16	
	3d. NORDQUIST, '15	
880-Yard Run	1st. FARON, '16	
	2d. BARNEY, '15	
	3d. HARRIS, '16	
One-Mile Run	1st. BROWNELL, '15	
	2d. BARNEY, '15	
	3d. YOUNG, '16	
Two-Mile Run	1st. McCORMICK, '16	
	2d. ANTHONY, '16	
	3d. BROWNELL, '15	
120-Yard Hurdles	1st. *REDFERN, '16	
	3d. NORDQUIST, '15	
	2d. MCINTOSH, '15	
220-Yard Hurdles	1st. REDFERN, '16	
	2d. *NORDQUIST, '15	
	3d. PARSONS, '16	
Shot Put	1st. PALMER, '16	34 ft. 7 1-2 in.
	2d. SEIGFERT, '16	
	3d. KEITH, '15	
High Jump	1st. NICHOLS, '15	
	2d. FARON, '16	
	3d. GLASHEEN, '16	
Broad Jump	1st. PALMER, '16	
	2d. PARKER, '15	
	3d. NORDQUIST, '15	
Pole Vault	1st. LENNON, '15	
	2d. HOPE, '16	
	3d. FARON, '16	

* Disqualified.

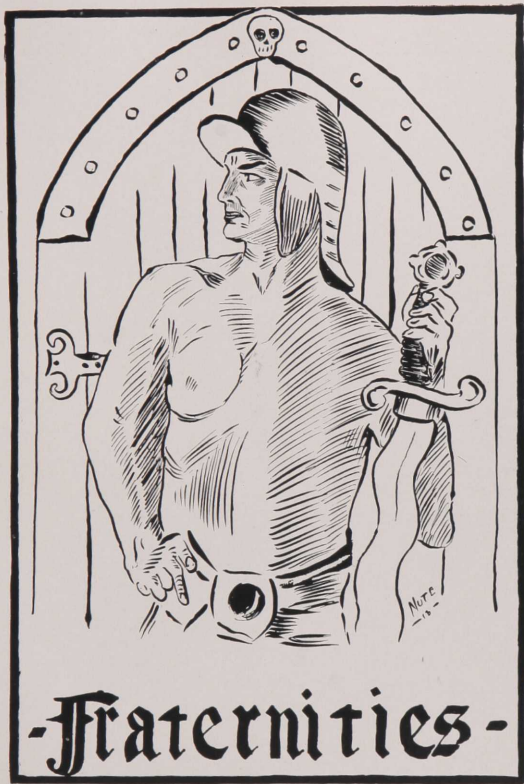
3d.

Referee—George R. Cobb. Starter—Professor Beamensderfer. Scorers—Whalen and Esty, '14. Timers—Newton, '14, and M. B. Greenough. Announcer—C. W. Rugg, '15. Judges at Finish—Slocum, '13, Glynn, '14, Cohen, '13. Field Judge—R. W. Bingham. Measurers—Reynolds, '13, Turner, '13. Assistant Field Judge—H. F. Thayer, '14.

The Women's Athletic Association

SARAH A. MILHOLSON	<i>Treasurer</i>
ADELAIDE G. WATSON	<i>Vice-President</i>
JANET S. GRAY	<i>Secretary</i>
HELEN W. FORD	<i>Treasurer</i>

The Women's Athletic Association was organized in 1911, the object being to "further all athletic interests among the women students." Owing to the small number of girls, basketball was temporarily abandoned but the enthusiasm was renewed this year and games are again being played. Tennis, however, is the principle sport for the young women. Last fall a tournament, including a large number of girls was arranged and played, being won by Miss Emily Curran, '16.



-Fraternities-



Rho Iota Kappa

Honorary Member

DR. HOWARD EDWARDS

Roll

1913

JOHN WILLIAM CORR

IRVING CLOVIS MITCHELL

CRAWFORD PECKHAM HART

WILLIAM FRANCIS REDDING

ARTHUR LESLIE REYNOLDS

1914

JOHN BRECHIN, JR.

MILTON HARRIS PRICE

HENRY ELLIS DAVIS

LEROY MERTON SHERWIN

MYRON WHITMARSH FINCH

JOHN LEO SULLIVAN

LEROY BURGESS NEWTON

LEROY ALLEN WHITTAKER

WILLIAM HARRY WEBB

1915

CLIFFORD ARNOLD ALLENSON

WILLIAM FRANK HANLIN

CARL LAFAYETTE COLEMAN

JOHN LOUIS JACKOWITZ

EUGENE JOSEPH FLAHERTY

WILLIAM EMMANUAL LEWIS

CURTIS WALCOTT GATES

FRANK HARRY MEYER

1916

DANIEL GASKELL ALDRICH

THOMAS WILLIAM FREEMAN

WESLEY CROWELL BRIGHAM

ROSWELL WOODWARD HENNINGER

GILBERT RALPH CORDIN

JAMES MURRAY HENRY

ROBERT ALLEN EBBS

PHINEAS MUNSSELL RANDALL

Resident Member

WILLIAM JOSEPH WHALEN



Theta Chi

Founded at Norwich University, 1856.

Roll of Chapters

Alpha	Norwich University
Beta	Massachusetts Institute of Technology
Gamma	University of Maine
Delta	Rensselaer Polytechnic Institute
Epsilon	Worcester Polytechnic Institute
Zeta	New Hampshire State College
Eta	Rhode Island State College
Theta	Massachusetts Agricultural College
Iota	Colgate University
Kappa	University of Pennsylvania
Lambda	Cornell University

Alumni Chapter

NEW YORK CHAPTER
BOSTON CHAPTER

WESTERN VERMONT CHAPTER
PITTSBURGH CHAPTER

Theta Chi

Honorary Member

THOMAS CARROLL RODMAN

Fraters in Facultate

FRED SILVER PUTNEY, Z.

FREDERICK JOSEPH GODIN, H.

Fraters in Universitate

1913

WALDO REINER

WALTER RAYMOND TURNER

WALTER COLWELL IRONS

ERROL KENYON WILCOX

1914

HAROLD WILLIAM BROWNING

LORENZO FOSTER KINNEY, JR.

JOHN CHARLES GLYNN

HERBERT REINER

WILLIAM HENRY TULLY

1915

NORMAN HARRISON BORDEN

FRANK JOSEPH LENOX

ROYAL CARLTON HUDSON

WESLEY CLIFTON MILLER

LAWRENCE FULLER KEITH

CHESTER WARREN RUGG

WALTER CURTIS SENIOR

1916

HENRY FALES DANIELS

ROBERT THOMAS LONGTON

DEAN BLENUS FRASER

JOHN HENRY MCGILL

RALPH EARL GLASHEEN

CLARENCE HOWARD PARKER

SETH FREDERICH HADLEY LAGERSTADT

ERNEST ELMER REDFERN

LESTER WILLIAM LLOYD

EARL WARMSLEY

VINCENT CASE YOUNG

Resident Member

ARCHIE COGGESHALL GODDARD, H.



Beta Phi

Honorary Member

JOHN BARLOW

Roll

1913

RALPH IRWIN ALEXANDER

GEORGE EDWIN SLOCUM

RUEBEN CHARLES BATES

JAMES HANNIBAL YOUNG

1914

FRANK HOWARD BAXTER

LOUIS JOSEPH ROSSI

JAMES RUSSELL ESTY

EARL CLIFTON WEBSTER

MYRON ANGELL HAWKINS

RICHARD WARD WESTON

OLIVER HAZARD STEDMAN

1915

RAYMOND LIVINGSTON BARNEY

CARLISLE HALL

ROBERT WILLIAM BELFIT

ALBERT CLAYTON HUNTER

FRANK EDWARD TABOR

1916

GEORGE GARNER GUINNESS

EVAN BEAUMONT JANSON

EDWIN DOUGLASS HILL

CHARLES IRVING MILNES

LEONARD HANLEY HOLLEY

RUST SCOTT

EDGAR BABCOCK LEONARD

CARLTON WEBB SHORT

Graduate Member

JOHN ELBERT SEABRIGHT, University of Virginia



Gamma Delta Sigma

Roll

1914

JAMES HILTON ALDRED

SETH ATHERTON CALDWELL

ROBERT JOHN BENSON

CEDRIC HAMLIN COLLINS

JOSEPH FRANCIS SHEA

1915

CHESTER WILLIAMS ALLENSON

HENRY CLINTON KELLY

LEON IRVING HARRIS

JOSEPH ELTON NICHOLS

1916

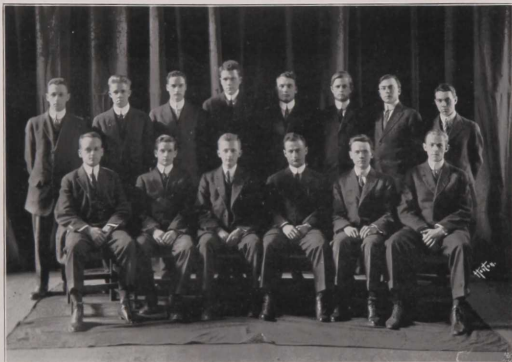
JOHN ADAMS DOLLIVER

MICHAEL JOSEPH O'NEILL

ERNEST GEORGE FIELD

JOHN HAYWARD PARSONS

CARLOS QUINTERO



Cohen, Browning, Esty, Baldwin, Mitchell, Davis, Matthews, Irons
Bates, Collins, Reiner, Webb, Young, Benson

Polygon

Inter-Fraternity Society

Rho Iota Kappa

WILLIAM HARRY WEBB

IRVING CLOVIS MITCHELL

HENRY ELLIS DAVIS

Theta Chi

WALDO REINER

WALTER COLWELL IRONS

HAROLD WILLIAM BROWNING

Beta Phi

REUBEN CHARLES BATES

JAMES HANNIBAL YOUNG

JAMES RUSSELL ESTY

Delta Alpha Psi

BENJAMIN COHEN


GOERGE HOLLAND BALDWIN

WILFRED CHIPMAN MATTHEWS

Gamma Delta Sigma

ROBERT JOHN BENSON

CEDRIC HAMLIN COLLINS

A decorative rectangular border composed of repeating floral and leaf motifs, framing the central text.

Organizations



Esty Slocum McGill
 Newton Brett Borden

Student Council

C. E. BRETT '13	President
L. B. NEWTON '14	Vice-President
N. H. BORDEN '15	Secretary-Treasurer
G. E. SLOCUM '13		J. R. ESTY '14

J. H. MCGILL '16

Freshman Rules Committee

G. E. SLOCUM J. H. MCGILL J. R. ESTY

Trophy and Literature Committee

C. E. BRETT J. R. ESTY

Social Room Committee

ENTIRE COUNCIL * C. E. BRETT, *Acting Chairman*

Athletic Committee

L. B. NEWTON J. H. MCGILL

The Rhode Island State College Lecture Association

WALTER C. IRONS	<i>President</i>
DOROTHY D. ELKINS	<i>Secretary</i>
ROYAL L. WALES, B. S.	<i>Treasurer</i>
HAROLD W. BROWNING	<i>Asst. Treasurer</i>
MISS MARY EDDY	<i>Village Member</i>

Program 1912-1913

October	22.	ANNIE S. PECK. "The Conquest of Mt. Huascarán."
November	2.	ROGERS AND GRILLEY. Musical and Literary Programme.
December	5.	LINCOLN WIRT. "The Conquest of the Arctic."
January	29.	BYRON PRATT. "The Mass Against the Man."
February	19.	PARKER'S BOSTON IMPERIALS. VIOLIN, FLUTE AND HARP; SOLOS; MALE AND MIXED QUARTETTES.
March	27.	MRS. PHIDELAH RICE. "Miss Hobbs."



The Glee Club

Tabor	Dennis	Barney	Corr	Mailloux	Medbury	Hawkins	Dodge	Sullivan
Baxter	Hall	Scott	Anthony	Miller	Parker	Finch	Bates	Davis
		Webster (Mgr.)	Dr. Jules	Jordan (Director)	Young (Leader)	Young	Allenson	
		Bonlester	Borden	Randall	Hunter			

Glee Club

J. H. YOUNG *Leader*
 C. A. ALLENSON *Asst. Leader*
 E. C. WEBSTER *Manager*
 C. HALL *Asst. Manager*
 DR. JULES JORDAN *Director*

Soloists

C. A. ALLENSON, *Baritone*
 E. S. BOULESTER, *Reader*
 F. H. BAXTER, *Mandolinist*
 J. W. CORR, *Pianist*
 A. C. HUNTER, *Pianist*
 T. W. FREEMAN, *Bass*
 H. E. DAVIS, *'Cellist*

Quartette

C. D. HAWKINS J. L. SULLIVAN J. H. YOUNG R. C. BATES

First Tenor

W. E. DODGE
 C. D. HAWKINS
 C. H. PARKER
 L. A. WHITTAKER
 K. R. DENNIS

Second Tenor

J. L. SULLIVAN
 E. C. WEBSTER
 N. H. BORDEN
 D. HILL
 F. E. TABOR
 P. M. RANDALL

First Bass

R. C. BATES
 L. M. SHERWIN
 C. A. ALLENSON
 E. S. BOULESTER
 L. H. MAILLOUX
 H. C. ANTHONY
 H. C. MEDBURY

Second Bass

J. H. YOUNG
 C. HALL
 F. H. BAXTER
 R. L. BARNEY
 W. C. MILLER
 T. W. FREEMAN
 R. SCOTT
 M. W. FINCH

Concerts

WICKFORD HIGH SCHOOL
 WICKFORD, R. I. DEC. 6, 1912
 STAR THEATRE
 EAST GREENWICH, R. I. DEC. 13, 1912
 ODD FELLOWS HALL
 VALLEY FALLS, R. I. FEB. 1, 1913
 MEMORIAL HALL
 PEACEDALE, R. I. FEB. 26, 1913
 WESTERLY HIGH SCHOOL
 WESTERLY, R. I. FEB. 27, 1913
 CRANSTON STREET BAPTIST CHURCH
 PROVIDENCE, R. I. MARCH 7, 1913
 LIPPITT HALL
 KINGSTON, R. I. APRIL 3, 1913
 MANSFIELD GIRLS' CLUB
 MANSFIELD, MASS. April 9, 1913

BEACON BOARD



Sullivan Nichols Esty Barney Kinney Baxter Finch Hunter
Miss O. Nicholson Browning Young Corr Davis Gates

The Beacon

The Beacon Board

JAMES H. YOUNG, '13.....	<i>Editor-in-Chief</i>
HAROLD W. BROWNING, '14.....	<i>Managing Editor</i>
JOHN L. SULLIVAN, '13.....	<i>Athletic Editor</i>
LORENZO F. KINNEY, '14.....	<i>Exchange Editor</i>
EDITH M. SAFFORD, '14.....	<i>Literary Editor</i>
OLIVE NICHOLSON, '14.....	<i>Davis Hall</i>
JOSEPH E. NICHOLS, '15.....	<i>Social Editor</i>
JAMES R. ESTY, '14.....	<i>Alumni Editor</i>
FRANK H. BAXTER, '14.....	<i>Department Editor</i>
MYRON W. FINCH, '14.....	} <i>Campus Editors</i>
ALOY SOONG, '14.....	
RAYMOND L. BARNEY, '15.....	
ALBERT C. HUNTER, '15.....	

Business Department

J. WILLIAM CORR, '13.....	<i>Business Manager</i>
HENRY E. DAVIS, '14.....	<i>Subscription Manager</i>
CURTIS W. GATES, '15.....	<i>Advertising Manager</i>

The Beacon is the College weekly, to which everyone looks for information. In previous years it had been published monthly but this year the board found it advisable to make it a weekly paper, appearing on the campus every Thursday. It is now on a firm financial basis and is thoroughly up-to-date in its contents.

**'Varsity Debating
Team**

BIGELOW (Capt.)



BAXTER



BRIDEN

Annual R. I. S. C. vs. M. A. C. Debate

The second annual debate with M. A. C. took place at Kingston last spring. The subject was, "*Resolved* :

Rhode Island, represented by Messrs. Briden, '13, Bigelow, '12 and Baxter, '14, upheld the affirmative, while M. A. C. upheld the negative side of the question.

Both teams proved very efficient debators, presenting very strong arguments. However, the arguments of the Varsity were the more convincing and they showed more strength in rebuttal. The previous annual debate was won by M. A. C. by a small margin, and with much satisfaction we look upon the increasing efficiency of our debating team, which may be largely due to the training received from the debate with the best class team.

The judges were Hon. Sumner Mowry of Peacedale, W. A. Bradley, Superintendent of Public Schools of South Kingstown, and Mr. Prentice C. Hoyt of Worcester, Mass.



Officers

F. H. BRIDEN	<i>President</i>
E. J. BOULESTER	<i>Vice-President</i>
ALOY SOONG	<i>Secretary</i>
H. E. DAVIS	<i>Treasurer</i>

The Debating Society is composed of students from each class. Each class has a team supporting the affirmative and one the negative of the question which the Varsity will debate with the M. A. C. The idea being that the best class team, if opposing side to Varsity, shall debate against Varsity before its debate with M. A. C. Messrs Soong, Boulester and Davis made up the Varsity second team.

Varsity Team

F. H. BRIDEN, '13
 C. M. BIGELOW, '12
 F. A. RICHMOND, '12

1913 Teams

W. H. WEBB, J. H. YOUNG
 W. F. REDDING, R. C. BATES
 W. REINER, W. C. IRONS

1914 Teams

A. SOONG H. W. BROWNING
 E. J. BOULESTER L. A. WHITTAKER
 H. E. DAVIS F. H. BAXTER

1915 Teams

H. C. MOWRY F. E. TABOR
 J. LOFTUS W. TRESMOTT
 N. H. BORDEN H. W. JACKSON



Premo Price Dennis Miller Hawkins Lewis
Rugg Hunter (Leader) Davis (Mgr.) Hart

College Orchestra

Leader A. C. HUNTER
Manager H. E. DAVIS

Piano

A. C. HUNTER

Violins

T. FREEMAN
M. H. PRICE
W. C. MILLER
C. D. HAWKINS
K. R. DENNIS

'Cello

H. E. DAVIS

Trombone

V. E. PREMO

Cornets

C. P. HART
C. W. RUGG

Drums

G. M. LEWIS



FRANK H. BRIDEN	<i>President</i>
JAMES R. ESTY	<i>Vice-President</i>
MYRON W. FINCH	<i>Secretary</i>
HAROLD W. BROWNING	<i>Treasurer</i>

Living bodies have been classified as immovable, movable and those that move. Once the Y. M. C. A., being held down by misconception, was immovable. Misconception was replaced by possibility in which the Y. M. C. A. became movable and now with the advent of a definite object the Association is teeming over with energy and determination to perform that which they can realize to be of benefit and of worth to their fellow-beings and to the existing local civic conditions. The Y. M. C. A. has included now in its curriculum, beside the strictly religious phase, the social and civic sides, and are now well under way toward accomplishing ends.

It was through the aid of Mr. Arthur F. Newell, Secretary of the Y. M. C. A. at Brown University, that the possibility of deputation work among the surrounding foreign people was made clear. Through an arrangement with Miss Thurston, of Peacedale, a demonstration of the Robert System of teaching English to foreign students was held under Mr. Higgins, of Brown University, at the Neighborhood Guild, Peacedale, R. I. In the presence of many Y. M. C. A. men and others interested in Social Service work Mr. Higgins taught a class of 18 Italian students who understood little or nothing of English fifteen to twenty sentences of English in one hour. This work has since its beginning at Christmas, been kept up two nights a week, with classes having an average enrollment of ten.

Important speakers have addressed the Y. M. C. A. in its last year, of whom are: Mr. E. C. Mercer of New York, of the International Y. M. C. A. Committee; Mr. E. C. Andrews, Secretary of Army and Navy Y. M. C. A., Newport, R. I.; Arthur F. Newell, General Secretary of Brown University Y. M. C. A., Providence, R. I.; Dan Kulp, of Brown University, and Dr. Daniel Lambert, Mr. Paul Cloke and Prof. L. P. Dickenson of R. I. State College.

Electrical Engineering Society

Officers

W. H. WEBB	<i>President</i>
W. F. REDDING	<i>Vice President</i>
L. A. WHITTAKER	<i>Secretary</i>
W. C. MATTHEWS	<i>Treasurer</i>

Honorary Members, PROF. L. P. DICKINSON, ASSISTANT PROF. PAUL CLOKE.

The Electrical Engineering Society was organized in February, 1913, and promises to become a leading factor in the education of the students engaged in the study of Electrical Engineering.

It is the aim of the society to present papers and discussions on the commercial applications of electricity and by this means keep the students in touch with the practical phase of electrical engineering. It is planned to have engineers of practical experience lecture to the members during the next year. Owing to the late time of the year at which the society got into good working order, no such arrangements were made for the first year.

The society is now a student branch of the American Institute of Electrical Engineers and are subject to the rules and regulations of that body.

Members

1913

BENJAMIN COHEN	ARTHUR L. REYNOLDS
WILLIAM F. REDDING	JOHN L. SULLIVAN
	GEORGE E. SLOCUM

1914.

ROBERT J. BENSON	OLIVER H. STEDMAN
WILFRED C. MATTHEWS	W. HARRY WEBB
JOSEPH F. SHEA	LEROY A. WHITTAKER
	EDWIN O. YOUNG

1915.

CHESTER W. ALLENSON	FRANK J. LENNOX
CLIFFORD A. ALLENSON	FRANK H. MEYER
PHILIP R. CLOKE	WESLEY C. MILLER
EUGENE J. FLAHERTY	FRANK E. TABOR
ALFRED P. KIVLIN	ALVAH G. WOODWARD

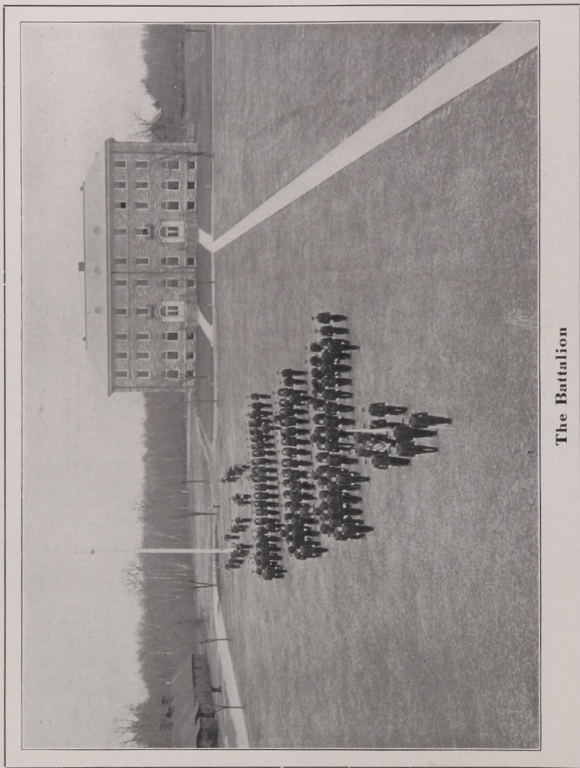
1916.

GILBERT R. CORDIN	LEONARD H. MAILLOUX
JOSEPH E. MCGILL	PHINEAS M. RANDALL, JR.
JOHN H. MCGILL	CHARLES SEIFERT

DANIEL SULLIVAN



The Battalion



The Battalion



The Battalion

Commandant

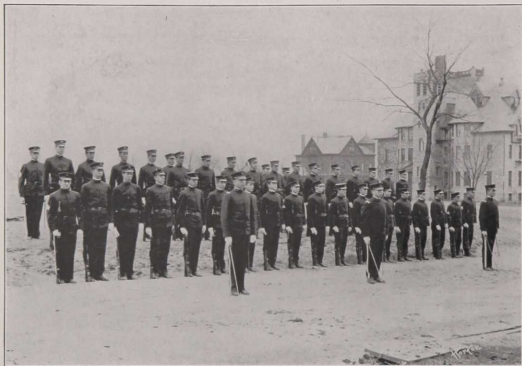
CAPT. W. E. DOVE, U. S. A. Retired.

Commissioned Staff

JOHN L. SULLIVAN	Major
J. H. YOUNG	First Lieutenant and Adjutant
J. W. CORR	Second Lieutenant and Quartermaster

Non-Commissioned Staff

B. COHEN	Sergeant Major
F. STECK	Quartermaster Sergeant
W. R. TURNER	Color Sergeant
G. E. SLOCUM	Color Sergeant



Company A

W. H. TULLY	<i>Captain</i>
W. C. MATTHEWS	<i>First Lieutenant</i>
W. REINER	<i>Second Lieutenant</i>
H. E. DAVIS	<i>First Sergeant</i>
L. B. NEWTON	<i>Quartermaster Sergeant</i>
H. W. BROWNING	<i>Sergeant</i>
M. H. PRICE	<i>Sergeant</i>
L. A. WHITTAKER	<i>Corporal</i>
W. E. LEWIS	<i>Corporal</i>
N. H. BORDEN	<i>Corporal</i>
J. BRECHIN JR.	<i>Corporal</i>



Company B

F. H. BRIDEN	Captain
W. H. WEBB	First Lieutenant
J. R. ESTY	Second Lieutenant
G. H. BALDWIN	First Sergeant
R. C. BATES	Quartermaster Sergeant
F. H. BAXTER	Sergeant
E. C. WEBSTER	Sergeant
C. H. COLLINS	Corporal
F. O. ASPINWALL	Corporal
C. W. GATES	Corporal
J. L. JACKOWITZ	Corporal



Company C

I. C. MITCHELL	<i>Captain</i>
R. I. ALEXANDER	<i>First Lieutenant</i>
W. F. REDDING	<i>Second Lieutenant</i>
H. REINER	<i>First Sergeant</i>
L. M. SHERWIN	<i>Quartermaster Sergeant</i>
L. F. KINNEY	<i>Sergeant</i>
J. C. GLYNN	<i>Sergeant</i>
J. H. ALDRED	<i>Corporal</i>
E. J. BOULESTER	<i>Corporal</i>
E. K. WILCOX	<i>Corporal</i>
M. W. FINCH	<i>Corporal</i>



The Band

2ND LIEUTENANT AND CHIEF MUSICIAN C. P. HART	<i>Solo Cornet</i>
PRINCIPAL MUSICIAN O. H. STEDMAN	<i>Solo Clarinet</i>
DRUM MAJOR S. A. CALDWELL	
SERGEANT W. C. IRONS	<i>Second Cornet</i>
SERGEANT A. L. REYNOLDS	<i>Trombone</i>
SERGEANT C. W. RUGG	<i>First Cornet</i>
CORPORAL A. C. HUNTER	<i>French Horn</i>
CORPORAL A. G. WOODWARD	<i>Second Clarinet</i>
CORPORAL G. M. LEWIS	<i>Snare Drum</i>
PRIVATE J. E. NICHOLS	<i>Bass Drum</i>
PRIVATE J. E. PREMO	<i>Trombone</i>
PRIVATE T. W. FREEMAN	<i>Bugler</i>
PRIVATE F. J. LENNOX	<i>Bugler</i>

Rifle Club

G. E. SLOCUM	<i>President</i>
W. E. DODGE	<i>Secretary</i>
J. C. GLYNN	<i>Treasurer</i>

Rifle Team

W. C. MATTHEWS, *Captain*

G. C. SLOCUM
W. C. IRONS
H. REINER
W. E. DODGE

J. F. SHEA
L. F. KEITH
L. K. EBBS
C. H. PARKER

V. C. YOUNG

A decorative rectangular border composed of repeating floral and leaf motifs, framing the central text.

The Alumni

Alumni Association

Officers

C. LESTER COGGINS, '07.....	<i>President</i>
RANDOLPH H. CARPENTER, '10.....	<i>Vice-President</i>
JOHN R. ELDRED, '00.....	<i>Secretary-Treasurer</i>

Executive Committee

C. LESTER COGGINS, '07	JOHN R. ELDRED, '00
RANDOLPH H. CARPENTER, '10	DRAVIN T. ARNOLD, '94
NELLIE A. HARRALL, '05	

The New York Club

The Rhode Island Club of New York, the first branch of the general Alumni Association to organize, did so as a direct result of the meeting of several former students at a football game with New York University in 1911. Shortly after this date a few of the fellows met one evening and planned a monthly gathering of as many former Rhode Island students as could be reached in New York and its suburbs. How well the plan succeeded was shown on April 27, 1912, when 22 covers were laid for the first annual banquet, held at the Park Avenue Hotel.

The meetings throughout were entirely informal, as was indeed the whole organization. The only officer was Mr. C. L. Coggins, '07, who acted as chairman when it became necessary to conduct a business meeting and as secretary in sending out notices.

With the coming of the present year, however, the club found itself grown to some twenty active members and in need of stronger organization, so a simple constitution was adopted and under it Mr. R. O. Brooks, '99, was elected president with Mr. R. H. Carpenter, '10, as secretary and treasurer. Outside of the social features of the club, its aim is to keep in touch with the work and needs of the college, to interest prospect students, to make it pleasant for all past and present students when in New York, and above all, to

BOOST RHODE ISLAND.

The Detroit Club

C. C. CROSS, '00	<i>President</i>
R. N. SOULE, '00	<i>Secretary and Treasurer</i>
C. S. BURGESS, '01.....	} <i>Membership Committee.</i>
A. A. DENICO, '01.....	

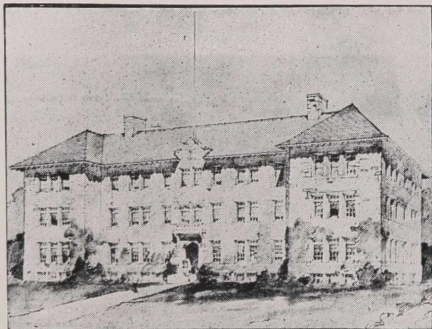
On the 20th of May, 1912, a few of the Rhode Island State College Alumni met at the Metropolitan Hotel in Detroit, with an idea of forming a Club. They were somewhat disappointed in not having several Alumni who were in town at that time with them, but those who were present went ahead and formed the Rhode Island State College Club of Detroit. The above officers were elected.

The object of the Club is purely of a social nature. They wished to keep in close touch with the College and with each other, as they are all interested in the happenings at the College and are always glad to welcome any new members, who come there. They expect some day to have a very good sized organization there in Detroit and hope to be able to open up Club Rooms, but this will probably be some little time in the future.

The Pittsburgh Club

GEORGE H. SHELDON, '03.....	<i>President</i>
HENRY N. BARLOW, '12.....	<i>Secretary and Treasurer</i>

In the early fall of 1912 a sort of fraternal organization was formed by the Rhode Island graduates in and around Pittsburgh, the idea being to bring the fellows together in a social way to work for R. I. The necessity of keeping in touch with the other alumni and the college was immediately realized. Most of the members are with the Westinghouse Co. and desire, if possible, to assist any R. I. man in this line of work. The social end of the club affords the members a pleasing reaction from their daily work, one which otherwise might not be obtained. It is desired that all R. I. men who are anywhere near Pittsburgh will stop in and see the boys there.



The New Science Hall

After over two years of consistent and untiring effort, President Edwards and the Board of Managers succeeded in having an act passed through the General Assembly, in the spring of 1912, granting us \$75,000 for a new building to be devoted to scientific purposes. As this Grist goes to press, the building lacks but one story and a roof. It is expected that it will be completed by August 1, 1913.

The building will be one hundred and fifty-six feet long in front with an outside distance, from front to rear, of seventy-two feet. It will be three stories high with a basement and the walls are being constructed of the same granite used in the construction of East Hall.

The third floor will be devoted to the Botany Department, under Professor Merrow, and the Bacteriological Department, under Doctor Hadley. The Zoological Department, under Professor Barlow, and the Physics Depart-

ment under Professor Dickinson, will occupy the second floor, while the first floor will be devoted to the Chemistry Department, under Doctor Leighton. There will also be a large assembly room on the first floor.

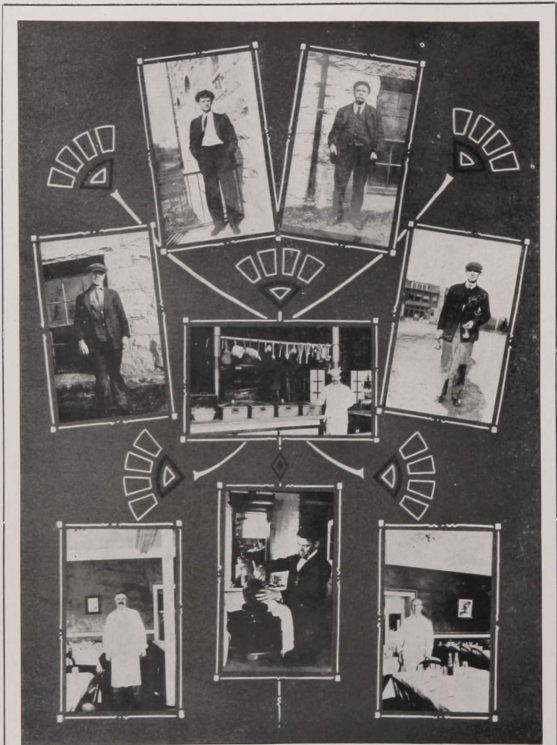
In the Botany Department there are to be two general laboratories for Botany I, one laboratory for Histology and Pathology, a room for a herbarium and library combined, and two small rooms for the professor and an assistant. On the south side of the building there will be a glass house which will be used for Physiological Botany.

For the Zoological Department there is to be one general laboratory 20x50 feet, one advanced laboratory 28x30 feet, one office 10x20 feet, one lecture room 20x30 feet, a museum 30x40 feet, and a small dark room, which will be used by both the Zoological and the Physics Departments.

At the disposal of the Physics Department there is to be one recitation room, three main laboratories, one special optical laboratory, one instrument room and one office. There will be new equipment added to this department, especially for lectures and demonstrations. There is to be a lecture table equipped with gas and electricity. A motor generator will furnish a direct current. For works in light, there is to be a lecture room provided with metal shades in order to make the room perfectly dark.

The Chemistry Department will have one general laboratory 30x57 feet for general chemistry and qualitative analysis, one quantitative laboratory 28x30 feet, one organic laboratory 20x30 feet, one weighing room 10x20 feet, one assaying room 10x20, one room 14x20 for physical and agricultural chemistry, one room 12x20 for water analysis, one laboratory 12x20 for electro chemistry, two recitation rooms, each 15x20, two offices and supply and storage rooms.

The assembly room will be capable of seating one hundred and fifty. It will be fitted with projection apparatus and a demonstrator's table. This room will be used by any of the departments where lecturing is desired.



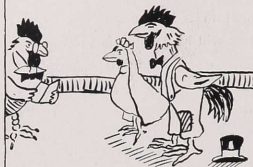
ABOUT THE CAMPUS

I



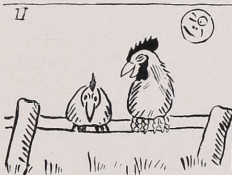
- THE BEGINNING -

IV



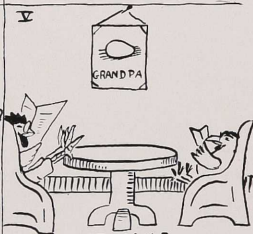
THE WEDDING

II



- THE COURTSHIP -

V



AT HOME

III



- THE ELOPMENT -

VI



AT REST

CBNOTE — 13 —

1913 Poultry Club

On January second, nineteen thirteen, we pitched our tepee at Rhode Island State College with Sandy Hook in the advance, scanning the horizon for the rolling hills of Kentucky.

Father Time was at the camp fire with the shovel feeding string beans to Chief Red Spot. Doctor Ford superintended the unloading of the packs of note books. Then as "we were all willing," with Shrimp and Pheasant as guides, we shouldered our little bags of Dry Mash and were welcomed at the City Hall by Judge Rickey.

Doctor Lambert took us in charge and under his instructions we soon were able to produce Thousand Dollar birds.

Chief Red Spot soon held a pow-wow, with Brodie as his chief scout, and the Granger pushing the quill. At this council the tribe organized as "The Lambert Poultry Club."

The tribe took several trails to different chicken wigwams. On one occasion Pheasant ordered a piano to appease his hunger. Brodie and Brownie manifested their appreciation of the meal by giving the charming waitress a bit of silver.

Three of the tribe one day lost the trail to Bradley's and were unable to find it for three days.

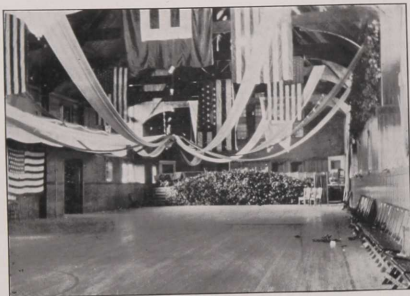
Around the camp fire many thrilling tales were told of the wilds of Kentucky. Doc. Lambert related of a certain young man who asked if it was proper to propose to a girl on his knees. "Yes," was the answer, "or tell her to get off."

The councils of the Lambert Poultry Club close by a wild whooping war-dance with the beating of tom-toms and uncanny shrieks of Red's violin. Shovel.

THE YEAR.



VEN



Junior Promenade

LIPPITT HALL,

APRIL 26, 1912

Committee on Arrangements

WALTER C. IRONS, *Chairman*

Invitations

JAMES H. YOUNG

Decorations

RAYMOND C. HOPKINS

Programs

REUBEN C. BATES

Reception

H. W. HAWKHURST

Music

H. W. WEBB

Refreshments

A. L. REYNOLDS

Patronesses

MRS. HOWARD EDWARDS
 MRS. ROYAL L. WALES
 MRS. FRANK K. SECHRIST
 MRS. BURT L. HARTWELL
 MRS. GEORGE E. ADAMS
 MRS. GEORGE R. COBB

Commencement Week

June 16-20, 1912

Program

Sunday, June 16

- 3:00 P. M. Baccalaureate Address Chapel
7:00 P. M. Cantata Village Church

Tuesday, June 18

- 8:00 P. M. Reading of Prize Essays Chapel

Wednesday, June 19

- 9:00 A. M. Interclass Track Meet Athletic Field
2:30 P. M. Class Day Exercises Davis Hall Lawn
8:00 P. M. Faculty Reception East Hall

Thursday, June 20

- 11:00 A. M. Commencement Exercises Lippitt Hall
2:00 P. M. Annual Business Meeting of the Alumni Association . . . South Hall
3:00 P. M. Alumni Baseball Game Athletic Field
8:00 P. M. Commencement Ball Lippitt Hall

Baccalaureate Service

June 16, 1912

Program

Invocation	REV. CHARLES P. REDFIELD
Soprano Solo	MISS JANET L. FREEMAN
Scripture Reading	REV. CHARLES P. REDFIELD
Hymn, Carmina Sanctorum	
Prayer	REV. CHARLES P. REDFIELD
Soprano Solo	MISS JANET L. FREEMAN
Address, "Rejoice, O young man, in thy youth, and let thy heart cheer thee in the days of thy youth"	PRESIDENT HOWARD EDWARDS
Benediction	REV. CHARLES P. REDFIELD

Reading of Kingston Prize Essays

June 18, 1912

Program

Essay, "Methods for the Extraction of Sulphur from its Ores." J. RUSSELL ESTY
Essay, "The Providence Water Supply".....EARL C. WEBSTER

MUSIC

Essay, "The Utilization of Peat".....CARLE M. BIGELOW
Essay, "The Lumiere Method of Color Photography".....LORENZO F. KINNEY

MUSIC

Essay, "The Industrial Conditions of Lawrence, Massachusetts." EDITH SAFFORD
Essay, "The Solution of the Immigration Problem".....ALOY SOONG

First Prize, ALOY SOONG

Second Prize, CARLE M. BIGELOW

Third Prize, LORENZO F. KINNEY

Class Day

June 19, 1912

Program

Roll Call	MISS B. M. NUTTING
Class History.....	{ P. H. CLARK
	{ MISS A. C. SLATER
Class Data	{ A. J. PATTERSON
	{ C. H. LARKIN
Class Prophecy.....	{ MISS E. P. HENDERSON
	{ H. N. BARLOW
	{ F. A. RICHMOND
Presentation of Medals.....	MISS D. W. CALDWELL
Planting of Ivy	W. J. WHALEN
Class Will.....	{ C. M. BIGELOW
	{ G. E. SHERMAN
Presentation of Spade.....	S. C. WEBSTER
Presentation of Flag.....	MISS E. H. COLT
Class Gift.....	MISS A. E. KENYON
Pipe Dream	D. E. WARNER
Address to Undergraduates.....	WALTER DOLL



Commencement Exercises

June 20, 1912

Program

Invocation	REV. F. E. SEYMOUR
	MUSIC
Solo—"God, My Father"	<i>Dubois</i>
	E. H. MILLER
Address—"What Pays?"	HON. R. B. BURCHARD
	MUSIC
Solo—"O Thou Sublime Sweet Evening Star"	<i>Taunhauser</i>
	E. H. MILLER
Address	LIEUTENANT-GOVERNOR Z. W. BLISS
	MUSIC
	CONFERRING OF DEGREES
	MUSIC

Commencement Ball

In Honor of Class of 1912

By Class of 1913

JUNE 20, 1912

Committee of Arrangements

WALTER C. IRONS

REUBEN C. BATES

Patronesses

MRS. HOWARD EDWARDS

MRS. VIRGIL L. LEIGHTON

MRS. ROYAL L. WALES

MRS. MARSHALL TYLER

Social Room Reception

November 8, 1912

CLARENCE E. BRETT, *Toastmaster*

Program

MUSIC

Purpose of the Social Room.....	PROF. DICKINSON
History of the Social Room.....	PROF. BARLOW
Senior Class	W. C. IRONS
Junior Class	H. W. BROWNING
Sophomore Class	L. F. KEITH
Freshman Class	R. W. HENNINGER
Football.....	{ W. REINER, <i>Myr.</i> J. L. SULLIVAN, <i>Capt.</i>
Basketball	B. COHEN
Track	M. A. HAWKINS
Baseball	L. M. SHERWIN
Beacon	J. H. YOUNG
Debating Society	E. J. BOULESTER

College Songs

Yells

Refreshments

Committee on Arrangements

C. E. BRETT, '13

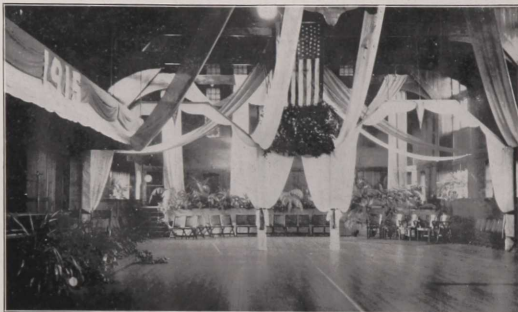
G. E. SLOCUM, '13

J. R. ESTY, '14

L. B. NEWTON, '14

N. H. BORDEN, '15

J. E. MCGILL, '16



Sophomore Hop

Lippitt Hall, November 22, 1912

Committee of Arrangements

LAWRENCE F. KEITH, *Chairman*

Reception

C. A. ALLENSON

Decorations

N. H. BORDEN

Music

ALBERT C. HUNTER

Invitations and Programs

A. P. KIVLIN

Electrical Effects

W. C. MILLER

Floor

FRANK E. TABOR

Refreshments

CARLISLE HALL

Patronesses

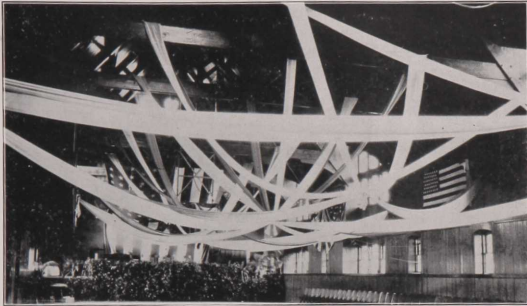
MRS. MARSHALL H. TYLER

MRS. VIRGIL L. LEIGHTON

MRS. GEORGE R. COBB

MRS. LESTER W. BOARDMAN

MRS. HERMAN CHURCHILL



Military Ball

Lippitt Hall, January 24, 1913

Executive Committee

MAJOR SULLIVAN, *Chairman*

CAPT. TULLY

CAPT. BRIDEN

CAPT. MITCHELL

Invitations

CAPT. TULLY, *Chairman*

LIEUT. REINER

Programs

Reception

CAPT. BRIDEN

1ST LIEUT. AND ADJUTANT YOUNG

Floor

Decorations

LIEUT. ALEXANDER

2ND LIEUT. AND QUARTERMASTER CORR

Electrical Effects

LIEUT. REDDING, *Chairman*

LIEUT. MATTHEWS

Refreshments

LIEUT. WEBB, *Chairman*

LIEUT. ESTY

Financial

Music

CAPT. MITCHELL

2ND LIEUT. HART

Patronesses

MRS. HOWARD EDWARDS

MRS. BURT L. HARTWELL

MRS. WILBUR E. DOVE

MRS. GEORGE R. COBB

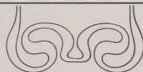
MRS. MARSHALL H. TYLER

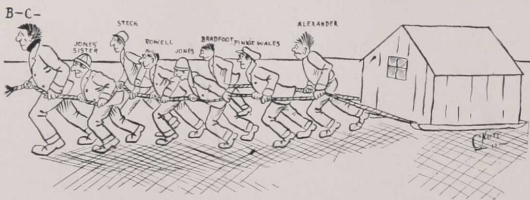
MRS. PHILLIP HADLEY



"A FRIEND IN NEED
IS A FRIEND INDEED"

Grindings



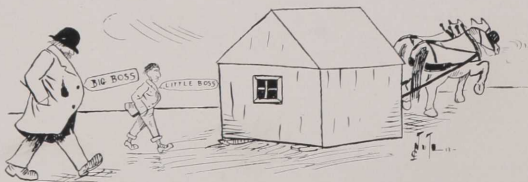


Uncle Tom's Cabin

The ever popular and traditional presentation of Uncle Tom's Cabin was held again this winter at R. I. State College. The play was well attended and was followed throughout the time with considerable interest. The setting of the scene was well chosen and very natural and aided very materially in making the presentation realistic. Credit may here be given to the managers for their efforts and ingenious planning in the development of the play.

The curtain of night was raised at 7 A. M. sharp and disclosed a little red cabin setting quietly in the center of a quadrangular clearing. There was a path leading to his master's mansion (Davis Hall) on one side, and another leading to the cotton fields on the other side. The light in the sky and the condition of the vegetation showed that the setting was on a bright morning in January. No smoke was curling up from the chimney which indicated that Uncle Tom was not yet up, and, as in those days of slavery, telephone conveniences were not at hand.

The play went on without a hitch and was well received. It may be interesting to note that in the change of scenery Uncle Tom's Cabin was drawn off the stage by horses.



Society for the Prevention of Sarcasm to Aggies

CRAWFORD P. HART	<i>President</i>
WILLIAM E. ANDERSON	<i>Vice-President</i>
WALTER C. IRONS	<i>Recorder</i>
W. FRANK HANLIN	<i>Exchequer</i>
JOHN C. GLYNN	<i>Inside Guard and Politician</i>
CEDRIC H. COLLINS	<i>General Mechanic</i>
JOHN L. JACKOWITZ	<i>Attorney</i>
LEROY M. SHERWIN	<i>Loyal Tender of the Bull</i>

This society is of recent formation and its purpose is explained in its name. Our attorney is especially adapted to argue with anyone on any subject whatsoever. Special care was taken in the choice of officers to appoint only those who are ardent in the cause. Hurrah for the Aggies.

Brotherhood for Prevention of Useless Study**Loyal Order of Sons of Rest**

MIKE W. FINCH	<i>Reverent Master</i>
FATINA WEBSTER	<i>Worthy Sub-Potentate</i>
TACKIE GLYNN	<i>Dauntless Deacon</i>
RUBLE DARLING EBBS	<i>Sedate Scribe</i>

To name the inferior officers of this organization would include Rustie Scott, Figum Newton, and Scrimera Caldwell, who are able understudies and spend most of their time in pursuit of the cause.

NON-PARIEL**All-American Football Team from R. I. State College**

Coach and trainer, Augustus B. Davis, former all star fusser of Penn.; full-back, John Loftus, future evangelist of Turkey; right half-back, Henry H. Broadfoot, former Providence detective; left half-back, Harold C. Jones, expugilist of Providence; quarter-back and captain, Ralph Irwin Alexander, the coming statesman; center, Aloy Soong, direct descendant of China's ambassador in Egypt, 28 B. C.; right guard, Curtis W. Gates, alias Lizzie; left guard, Frank E. Steck, who "works while we sleep"; right tackle, Edward J. Boulester, noted soloist; left tackle, Wilfred N. Wales, alias Pinkey, who needs no introductions; right-end, Crawford P. Hart, famous two miler; left-end, Frederick O. Aspinwall, champion checker player; substitutes, Slocum, who uses his "bean" and Kelley, who "lives on his rep." After considerable discussion it was decided that the team should be managed by Edwin O. Young, whose experience as the social leader at Newport last summer seemed sufficient qualification. U. Cant-guess, athletic reporter.

BELFIT:—"Where can I find a pair of long stockings?"

ALEXANDER:—"Up to Davis Hall."

* *

Did you all see the "Dummy" the morning after the Soph Hop? Ask Sims about it.

* *

PROF. WALES:—"Rossi, why is this statement true?"

ROSSI:—"By common sense."

* *

BAXTER, in Thermo., trying to explain the second law of thermo-dynamics:—"Take a certain amount of coal and combust it."

* *

PROF. WALES:—"Take a pound of water and then some chloroform instead of chloroform first."

* *

Economics I, DR. EDWARDS:—"Why, I wouldn't give fifty cents for a diamond."

DAVIS:—"You'll admit that you paid more than fifty cents for one once."

DR. EDWARDS, later:—"You know too much."

* *

Soong gets a haircut and a Physical Chemistry cut at the same time.

* *

YOUNG:—"I believe in having a good time while I am young and not get married until later on in life."

ESTY:—"Well, James, you always will be young. (Young.)"

* *

DR. CHURCHILL:—"I think that will do now, Mr. Hawkins. You have taken up all of your allotted time."

MYRON:—"Thank you."

* *

JACK (during football scrimmage on campus):—"Excuse me, 'Tulby.'" "

"TUBBY":—"Don't mention it."

* *

Jackowitz has a hard time to gain admittance at Andrews Field. The gate-keeper mistakes him for a boy carrying one of the players' suit-cases instead of a star quarterback and captain of the 2nd R. I. team.

* *

In Physics Class on sound. "CASEY JONES":—"If there are four beats in a measure, how many beets in a bunch?"

* *

FRESHIE:—"What is the incidental fee of \$2.25 for?"

BURSAR:—"Oh, wear and tear of buildings. It should be \$22.50 instead in some cases."

* *

YOUNG:—"I am going into the Broker's business after graduation."

SLOCUM:—"Well, what are you going to break?"

PROF. WALES:—"When I was in the University of Tennessee, we had an engine that just drank steam."

SLOCUM:—"Did it ever get drunk?"

* *

OVERHEARD IN THE KITCHEN.

TAC:—"What did you get in A. C., Pat?"

"A," said Pat.

TAC:—"A what?"

PAT:—"A flunk."

POLLARD (to Tac):—"What did you get in English?"

TAC:—"B."

* *

TABOR AND JOHN PRYOR IN KITCHEN.

JOHN:—"Do you like Baked Beans?"

"TORCHY":—"Sure, where are they?"

JOHN:—"Then you must be a Bostonian."

"TORCHY":—"Oh, no! I'm a Rhode Island Red."

* *

"Wigzel" appears late to supper and finds all desserts gone.

ESTY:—"Now, you see, how the waiters fare. We have to take up with what is left."

JONES pipes up suddenly:—"Yes, but the waiters are very seldom left."

* *

OVERHEARD IN DINING ROOM.

BOULESTER:—"We play Tufts tomorrow, don't we?"

R. BARNEY:—"No, we play gentlemen."

* *

OVERHEARD IN THE KITCHEN.

INQUISITIVE ONE:—"Why don't we have smelts once in a while?"

CHEF:—"We do."

INQUISITIVE ONE:—"We do?"

CHEF:—"Last week we had codfish and a half dozen smelt."

* *

TABOR:—"Where has Miss Harrall been?"

C. HALL:—"She has been out Nutting." (B. Nutting.)

* *

HEARD AT OCKISH CLUB.

IRONS:—"That's a nice house that 'Tip' built."

OCKISH:—"Yes, but I like the one that Vander built." (Vanderbilt.)

* *

CASEY JONES:—"Do you open the door when Roy knocks." (Knox.)

* *

PROF. BOARDMAN (reading in English):—"Oh Mercy!" to myself I cried, "if Lucy should be dead!"

* *

SHERWIN (at breakfast):—"Say, but those are fine looking cakes."

JACKOWITZ (having been in Wakefield the night before):—"Yes, they look like molten iron after it has cooled."

MISS TUCKER (referring to a plant near her desk in the office):—"What is the name of this plant. Mr. Godin?"

MR. GODIN:—"I don't know the exact name of that plant, but it is evidently quite close to a lemon."

* *

MYRON HAWKINS (in English):—"He (Cataline) murdered his sister's wife's husband."

* *

PROF. WALES (handing a ticket punch to Browning): "Here's the punch. Have a drink."

* *

GLYNN:—"Those two fellows are having a circus all the time."

E. K. WILCOX:—"What two fellows?"

GLYNN:—"Barnum and Bailey."

* *

TULLY:—"Is that clock right?"

HUDSON:—"That is the one that they set the sun by."

* *

PROF. BOARDMAN (to Morrison in English Class):—"Rise and shine."

* *

TULLY:—"Oh, yes, Budlong is the man that grows pickles and cucumbers."

* *

KYLE:—"Deep canonkions show the strength of a man's brain."

* *

PROF. ADAMS:—"Name the sugar crops."

H. REINER:—"Sugar lime, sugar beet and honey."

* *

PROF. WALES (to M. E. X. Class):—"Well, Sullivan, these men can't seem to get 'L.' Give 'em 'L.' "

* *

HALL:—"Well, Ezra, are you going to the C. E. tonight?"

EZRA:—"I don't know, though I need the change."

HALL:—"Ha! Ha! Going to rob the contribution box, hey?"

* *

BARNEY AHRENS:—"Formaldehyde attacks the memory."

* *

CHEF:—"The reason why the Titanic went down was because it couldn't go up."

* *

"PREXY" (in Chapel):—"At the end of each quarter we find a large number of men who have dropped classes during the term without due consultation of proper authorities. A great deal of this is found among the Freshman Class and it is sometimes done by people who ought to know better."

* *

"FRENCHY" (to Chef):—"I want some refreshments for our Soph Hop." (Junior Prom.)

"ALEX" (in Mechanics' Class):—"Where does that sign come from?" After Prof. Wales had explained it several times for three days, "Alex" again asks where the minus sign comes from? Prof. Wales replies, "Aw! Good Night!"

* *

BOULESTER (a dnniing table):—"How long will it take a letter to go to Denver and return?"

R. BARNEY:—"Well, that depends somewhat on whether you ride or walk." (Lucy smiles.)

* *

SOPHOMORE KNOWLEDGE.

SHEA:—"Rabies is a disease contracted from a bite of a mad dog. Hydrophobia is a disease contracted from eating green apples."

* *

WEBSTER (remarking about Basketball game at Wakefield):—"Oh yes, Torchy, I see. You played the bald-headed infants."

* *

PA WEBSTER:—"Were you able to go out, Karmann?"

KARMANN (explaining absence):—"Yes, but I didn't."

* *

YOUNG (in Physical Chem. Class):—"Oh, say, did I break this—No! no! someone says, I didn't. This is the most expensive apparatus we have."

* *

KIVLIN:—"Do they still have chapel every Wednesday morning like they used to?"

"Benny" breaks Waldo Reiner's new Derby Hat, but has the Price to purchase a new one, however.

* *

In the Freshman Math Class, while "Tip" was figuring out a problem on the blackboard, a great commotion arose which aroused his imagination. Upon observing to the rear, Broadfoot said, "Someone does not know what to do with their feet."

* *

Brechin yawns in Calculus class. "Tip" warns him to refrain. "If it is necessary to perform such operations, do it in the Physics Class. I am not the cause of it."

* *

At supper one Sunday evening, "Benny" asks for raw boiled eggs. The waiter does as is requested. "Benny" eats one and places the other three in his coat pocket, where he thought they were safe. Baxter comes along and what becomes of his eggs?

* *

Seniors do a little joy riding in wheel barrows. Redding and Slocum were passengers, Briden and Cohen were motormen.

* *

HANLIN:—"That Kahjenberg is some Chemistry."

CORR:—"How's that?"

HANLIN:—"It has agreed with us several times."

HENNINGER:—"Bill, do you love me still?"

REDDING:—"The stiller the better."

* *

REDDING (in Exp. Eng.):—"Are fish oils animal oils?"

PROF. WALES:—"Yes, if they are dog fish."

* *

BOULESTER (in Eng. IV):—"Has anyone ever read, 'The Trials of a Twin?'"

BAXTER:—"Which one?"

* *

Glee Club officers:

Dr. Jules Jordan, Conductor.

Earl C. Webster, Motorman.

* *

Yens tries to run over Brown's auto, and, as a result, has three ribs fractured.

* *

PROF. CHURCHILL:—"You can choose a man of the revolutionary war times to speak on.

IRONS:—"Daniel Webster?"

* *

REDDING:—"Prof. Dickie lectures so much on wave motion I am getting sea-sick.

TABOR (in the kitchen):—"Is that clock fast, Chef?"

CHEF:—"I think so. I saw Knight nail it there."

* *

HUDSON:—"I think this ceiling is a put up job."

* *

At Yale Rover basketball game.

YALE ROVER:—"Look out for that big fellow."

FREDDIE:—"Never mind, I won't hurt you."

* *

Glynn expounds in Botany.

BALDWIN (to Glynn):—"What is a fruit?"

GLYNN:—"A herbaceous plant."

(Later.) Miss MERROW:—"How are flowers pollinated?"

TAC:—"By birds, insects and bees."

MISS M.:—"What birds?"

TAC:—"Crows."

* *

MR. LICHTENTHAELER:—"Where is limestone found?"

"TAC" GLYNN:—"In bed."

* *

PA WEBSTER:—"Were you able to go out, Karrmann?"

KARRMANN (in explaining absence):—"Yes, but I didn't."

* *

BALDY:—"Kiss me, Steck, nothing makes me sick."

STECK:—"No, but it might make me sick."

* *

PROF. SMITH:—"What is silicon dioxide?"

KARRMANN:—"Silicon dioxide is a gas; it is very rare."

MEYER:—"The body is heavier after death, because then it is dead weight."

* *

In Bot. I, MISS MERROW:—"In what form does N. go into the leaves?"

BOOB (in a low voice):—"Carbon dioxide."

* *

Soong accuses Kyle of wasting time while under college employment.

KYLE (straightening up and raising his hand, which contains a large book):—"I object! I object!"

* *

ALLEN '16 (to Baldwin):—"Have you got that parabolical curve for sale?"

Hort. IV. Spraying and Pruning Class pruning trees in the apple orchard. Andy gets out on a branch and then cuts the branch off close to the trunk; drops to the ground, lands on a rock head first. Rock wasn't injured.

* *

TULLY (to Dodge):—"Say, Scup, is a sea gull a fish or a bird?"

* *

"Cupid" Redding walked across the campus with a co-ed. Your a comer, "Bill."

* *

In poultry judging class, DR. LAMBERT:—"If a hen lays diseased chicks, she isn't worth keeping."

* *

"Tub" Nutting caught breaking the rule.

* *

Industrial History Class, ALEXANDER:—"The actual cost of the war in dollars and cents was \$2,000,000,000."

* *

PROF. WALES' greeting to class Friday morning before the Christmas vacation:—"We will have our regular tests this morning."

CLASS in unison:—"When will we hand them in?"

PROF. WALES:—"Send them by mail."

(How about those tests that did not get here on time?)

* *

"Torchy" says he is going to cut off his bath-robe in order to have a Mackinaw like "Webby's."

* *

April 1. Who let the hogs out? Who put them back?

* *

In Physics Class. (Mr. Cloke explaining the arc light.) FINCH:—"Mr. Cloke, did you know that Noah was the first electrician?"

Mr. Cloke didn't bite.

(He made the arc light on Mt. Ararat.)

* *

COLLINS to "Pa" Webster:—"How can one man uncoil a tape?"

PA WEBSTER:—"That's a big joke—Ha! Ha! Ha! That ought to go in the Grist. I'm going to purchase one."

134 Rhode Island State College

Bill Corr tries to burn the Chem. Lab. Saturday, November 12, '12, when working on the Victor-Meyer experiment.

* *

OLIVE DATSON:—"An example of a physical change is the 'chopping of wood.'"

* *

"JIM" YOUNG:—"I did!"

* *

Reiner's soils report states that the weather was roar.

PROF. ADAMS:—"Some phonetic spelling, Reiner."

* *

BATES in O. E.:—"John Adams was born at the early age of 12 years."

* *

ANDERSON to Chef:—"Say, Chef, how long does it take to cure a ham?"

CHEF:—"Of what?"

BILL:—"Why-er-(pause)—!!!"

* *

SLOCUM at supper:—"Is this dessert or beans?"

* *

The hit of the season—Bill Redding's haircut. The girls are laughing at you, not smiling at you.

* *

MR. BOARDMAN (in Eng. IV):—"You see the English are ahead of us in education."

WHITTAKER:—"How much is cabbage ahead?"

* *

Redding eradicates the impediment on his upper lip.

* *

Economics I, DR. EDWARDS:—"If a cannibal had only one banana to sustain life on,—

SLOCUM:—"Why don't he buy a bag of peanuts?"

* *

DODGE:—"What is a transmission, anyway?"

COLLINS:—"A transmission is that property of matter which allows itself to be transmitted."

* *

ANOTHER ONE. DR. EDWARDS (in Economics I):—"A man goes out and catches a big fish and in the fish he finds a gold dollar."

* *

Only three asleep in the Forestry Class.

* *

P. I. K. poodle just escaped the sausage factory.

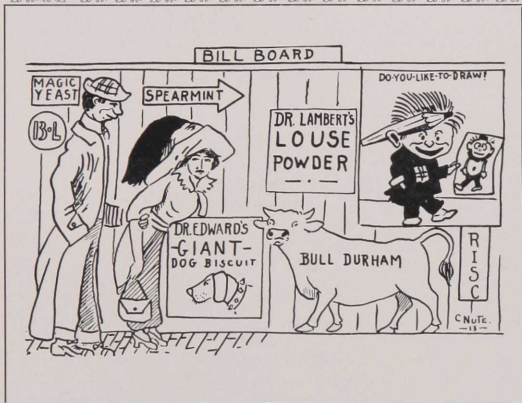
* *

(In Forestry Class) MR. MILES:—"This size tree cuts into two railroad ties."

WARNER:—"To be used by a railroad company?"

GODDARD:—"No, for a steamboat company."

Advertisements



Calendar





The Johns Hopkins Horticultural Laboratories and Greenhouses at Baltimore, Md.

Lord & Burnham's Greenhouses form Part of the Educational Equipment of Prominent Institutions.

HERE, there and everywhere all over this big prosperous country we are building greenhouses for institutions as an essential part of the educational equipment. No longer are they confined alone to Agricultural Colleges and experiment stations.

For example, the Johns Hopkins University at Baltimore, Md., conducts a distinct horticultural course with botanical laboratories and experimental greenhouses.

The greenhouse work is carried on in the same vigorous, thorough way so characteristic of this wonderful institution.

The extensive group at Cornell University, we built. Those at Bussey Institute, Harvard, are ours.

If you are interested in having a greenhouse we would be glad to send you our Two G's Booklet, telling of Glass Gardens and giving a Peep Into Their Delights.

Lord & Burnham Company

Sales Offices—New York—St. James Bldg. Boston—Tremont Bldg. Philadelphia—Franklin Bank Bldg. Chicago—Rookery Bldg. Rochester—Granite Bldg.

Factories—Irvington, N. Y.; Des Plaines, Ill.

LOWELL

ANIMAL FERTILIZERS
ARE NEAREST TO NATURE

They are made from Blood, Meat and Bone, with essential chemicals added, and are the best substitutes for farm yard manure. See what successful customers say about them.

Write for Booklet and Calendar.

LOWELL FERTILIZER COMPANY

40 No. Market Street, Boston, Mass.

JACOB REED'S SONS
PHILADELPHIA

Manufacturers of

Gold Medal Uniforms

Unequaled Facilities and Qualifications for supplying
Cadet Uniforms



The largest and most successful College and School Uniform Outfitting House
in the United States.

Custom Tailoring, Ready-to-wear Clothing,
Haberdashery, Headwear, Fraternity Hat Bands and Neckwear

Calendar

March

1. Spiritualistic beings in evidence in Dining Hall. Tables start to leave "Peleg" and "Jack," but "Lucy" appearing, come to the rescue before any damage could result. Freshmen at Guild. Freshmen 25, Guild 23.
2. No lights for supper. Head-waiter Bates is unsuccessful in turning his cup of coffee upside down and takes a bath as a result.
3. George Slocum drops a q (water) in the horn.
4. "Senator" Arnold falls through a chair in Physics. Freshmen try out for interclass debates.
6. Mr. Matteson, Curator of Roger Williams Art Museum, addressed the students in chapel on "Work Done by Museums." In his talk he referred to "horses having feathers."
7. Sophomore Trial Debate. Beacon Board election—H. W. Hauxhurst, Editor-in-Chief; J. W. Corr, Business Manager.
8. Interclass Debaters chosen by the English Department.
9. "Benny" has a Teddy-Bear hair cut.
10. As a visitor was coming out of East Hall he noticed our Chem. Lab. at first glance. He remarks, "What's that? The henery."
11. "Torchy" leaves his breakfast to walk across the campus with "Jimmie."
13. Rev. W. O. Keirstead of Auburn, R. I., addresses the students of R. I. S. C. Briden shoots a basket-(ball) in the wiggle at the B Φ House.
14. Glee Club journeys to Westerly and entertains in the Opera House. Baseball men out for first time in season for a little batting practice on the Campus. Big squad report.
15. Heapy rainfall. No lights in Dorm. or B. Φ. House after 9:00 P. M.
17. St. Patrick's Day. The Wearing of the "Green and the Yellow" was a noticeable feature in the Dining Hall. B. Φ. celebrates. Wigzel's horse goes off without him. Who unhitched the mare?
18. Athletic meeting. Benjamin Cohen elected Basket-Ball Manager. Harold W. Browning elected Assistant Basket-Ball Manager. At meeting Waldo Reiner says "he blew up the Maine (football) all himself."
20. Prexy gives one of his familiar talks on "Character." Small audience.
22. "Benny" comes in at 7:40 A. M. and begs for a light breakfast. "Chef" brings out a small candle on a saucer. "Tip" slips another raw one over on the Sophs.
23. *P. I. K.* holds a public initiation on the Camps. Five initiates make star slides to the bases through the slush.
25. "Tip" returns test-papers which average about freezing point Fahrenheit.

THE THORNLEY SUPPLY CO.

Jobbers of

Plumbing, Steam, Gas and Water Supplies



Pawtucket

Rhode Island

All that is Needed

For the Farm, Garden and Poultry Yard

Providence Seed Co.

No. 6 Exchange Place

Providence

Rhode Island



The "Snow" Shoe

TRADE MARK.

Is well suited for the College man, as it combines style and splendid wearing qualities. We have a number of new Spring styles which are worth seeing. Ask to see the "Gink" and the "Rough Neck," two of the newest, and we know the reasonable prices, **\$3 to \$5 a pair**, will appeal to you.

Our specialties are Pumps and Court Ties that fit, \$4.00.

"Snow" Shoe Shop

Those Totally Different Shoes

434 Westminster St., Providence, R. I.

J. P. WALTON, Manager

Grist Calendar—Continued

26. Dr. F. N. Sealey gives a very interesting and instructive talk on "Sex Hygiene."

27. Soong follows Seth Caldwell's shoe out of the window of South Hall.

28. Mr. Philedah Rice presents "The Taming of the Shrew" in a very pleasing manner to enthusiastic audience. Glee Club quartet at Quanicotaug.

29. Another test in calculus. Glee Club quartet assists East Providence High School Orchestra by rendering several selections.

30. Dr. A. B. Cristy gave an illustrated lecture on "Alcohol" in the Chapel. Baseball—Sophs 10, Scrubs 8.

31. Palm Sunday. Pollard gets some ice cream and also some ketchup on his tail (shirt). Baxter and Pollard mix it up a little with ketchup and Worcester-shire sauce.

April

1. Theta Rho gets an April fool.

2. Juniors and Sophomores debate on Recall question. Judges vote unanimously in favor of Sophomores. Soong, Boulster and Davis take off the honors.

3. Rev. Duttan gives address in Chapel. Col. H. Anthony Dyer delivers an address on "An Artist's Rambles in the Search of the Beautiful," under the auspices of the R. I. S. C. Lecture Association.

Providence
Blank Book Company

Binders to the State
Book Binders
Blank Book Manufacturers

Pamphlet & Catalogue Work
a Specialty

GEO. E. EMERSON, Mgr.
15 Custom House St.
Providence, R. I.

The publishing of
This Book
was
made possible
by our advertisers

Each student is requested to....

Patronize our
Advertisers

E. P. TUCKER

Dealer in....

Choice
Family
Groceries

Hay, Grain, Coal and Wood

Also Agent for Troy Steam Laundry

West Kingston, R. I.



COMPLIMENTS OF



“TUBBY”
MILLS



COMPLIMENTS



of
a
Friend

Kenyon's Department Store

What kind of a store? A good store; a satisfying store, a store of high standards and, above all, a safe store.

In brief, a store that you will like and can trust. First of all **Reliability**, after that, Low Prices.

Kenyon's

Wakefield, R. I.

Grist Calendar—Continued

4. Departure for Easter.
5. Good Friday. College closes until Monday.
7. Easter Sunday.
8. Students back to work.
9. Freshmen and Juniors debate in Chapel. 1915—Loftus, Borden and Miller. 1913—Webb, Reiner and Redding. 1913 victorious.
10. Seniors don caps and gowns for first time. First smoker held in Chapel, East Hall.
- Mr. Krieger of Providence entertains audience. Grand success. Thanks to the Student Council.
11. Baseball—R. I. S. C. 1, Bowdoin 5.
13. Baseball Team journeys to Medford and lose second game 4-3. Sophs 2, Picked Team 4.
14. College Team takes students to Wakefield to church.
15. First social meeting of the Polygon at Theta Chi House. Finance Committee of House visits College.
16. Sophomores and Freshmen finish debate series. 1914—Baxter, Browning and Whittaker. 1915—Tabor, Trescott and Jackson. 1914 victorious.

Ballou, Johnson & Nichols Co.

Wholesale Dealers and
Manufacturers' Agents

Kitchen Furnishings

128 to 134 Dorrance St.
Providence, R. I.

Grist Calendar—Continued

18. Athletic Association meeting for purpose of raising money to clean up old debt. "Barney" offers to give a Minstrel Show.
19. English Department picks six debaters of 1914 teams for second team. Mid-term reports out.
20. N. H. 4, R. I. S. C. 0.
21. College Team goes to Wakefield to church.
22. Men return with high projects in view.
23. E. C. Webster elected Manager of Glee Club.
24. H. W. Hauxhurst resigns as Editor-in-Chief of Beacon. J. H. Young elected unanimously.
25. Bates Team arrives on Campus.
26. R. I. 2, Bates 1. (11 innings.)
26. Junior Prom.
27. 1914 6, S. K. H. S. 1, at Wakefield.
27. Alumni Banquet at Park Avenue Hotel, Park Avenue and 34th Street, New York City.
28. Churchgoers ride to Wakefield.
29. Tennis courts are rolled and in good condition. New material report for practice.

QUAYLE

Steel Engravers *and*
Manufacturing Jewelrymen *to*

AMERICAN
UNIVERSITIES

NEW YORK
25 W. Forty-Second St.

ALBANY
19 Chapel St.

CHICAGO
62 W. Randolph St.

THE E. S. HODGE CO.

Peace Dale, R. I.

Steam and Hot Water
and Hot Air Heating

Plumbing and Electrical Work
Hardware, Sanitary and Electrical Supplies
Bicycle Sundries
Agents for Glenwood and Furman Boilers,
Glenwood Ranges
Estimates Promptly Furnished
Satisfaction Guaranteed

TELEPHONE

G. E. ALLEN

C. E. ALLEN

ALLEN BROS.

Plumbing and
Heating
Engineers

Special Attention given
to All Kinds of Repairs

1136 Main St.
Pawtucket, R. I.

Telephone Conn.

Fern Crest Butter

Best
Grocers
Sell it

J. H. PRESTON & CO.

Wholesale
Distributers

Providence, R. I.

J. ATTMORE WRIGHT, Ph. G.

Registered Druggist

Bell Block Wakefield, R. I.

A COMPLETE LINE OF

Drugs, Chemicals, Patent Medicines, Toilet Articles, Perfumes,
Rubber Goods, Elastic Hosiery, Trusses, Sponges and
Chamois; Tobacco, Pipes, Cigars & Cigarettes.

A supply of Fresh Candy always on hand from the well-known manufacturers, namely:
Lowney, Lowell and Covell, R. L. Perry Co., Fuller-Greene Co.,
H. N. Fish Co., Bell Confectionery Co.

"THE DRUGGIST WHO TRIES TO PLEASE."

In our prescription department we use the double check system—thus insuring against mistakes; also, each prescription contains our guarantee that it is compounded in accordance with the doctor's orders.

Our soda cannot be beaten. Please call and be convinced. We pride ourselves on our line of domestic and imported Toilet Water and Perfumes. Fresh Candy; Delicious Soda.

Grist Calendar—Continued

May

1. Father Smith of Wakefield addresses students in Chapel.
2. Second edition of Beacon appears.
2. "Six Kleptomaniacs" at Library Hall given by members of Y. W. C. U.
4. R. I. S. C. 2, Norwich 3, at Kingston. Freshmen 6, Stonington H. S. 9.
6. Polygon meeting at *P. I. K.* house.
7. Sophs battle against Varsity on Recall question in endeavor to keep up its record. Soong, Boulester and Davis do excellent work for '14. Celebration in honor of new Science Hall. Smoker, Bon-fire and Fireworks.
8. P. Cloke appointed Assistant Prof. in E. E. Student Council meeting in Chapel.
9. Number of students off for Andrews Field to witness Brown game.
10. Arbor Day. No school. Brown 3, R. I. 1, in annual baseball contest. Great spirit manifested.
11. Interscholastic Track meet. One hundred and fifty men compete from prep. schools throughout R. I. Best meet ever held on Athletic Field. R. I. 20, Boston University 0, in listless game.
12. Excavation of new Science Hall begins.
14. Sophs hold Varsity to a 3-1 score for 6 innings.

Has a College Education value for me?

Where can I obtain it?

"Who's Who in America" contains the names of 9,643 markedly successful persons—representative list from all lines of American effort.

Note the following deductions—of 12 million beginning life, 9643 markedly successful. Of these, 7676 markedly successful are from 135,000 with a college education; of these 1967 markedly successful are from 11,800,000 without a college education. That is, *with* a college education your chance for marked success is 1 in 8; *without* a college education your chance is 1 in 6000. As the City has given you a free high-school education, so the State and Nation are offering you free at **Rhode Island State College** an opportunity through a college education to increase your chance of success 350 times. Is it not worth while to take the opportunity? Can four years be more profitably spent? Instruction at Rhode Island State College is free of cost; instruction at Rhode Island State College is of high grade. See estimate of catalogue as to expenses; see report of Legislature Commission (1909) as to grade of work. The College has courses for men and women. Its agricultural courses prepare high school men and women for Agricultural Practice, Agricultural Investigation, Agricultural Teaching.

Its engineering courses prepare high school men for Engineering Practice, Engineering Teaching, Engineering Work.

Its applied-science prepares men and women for Scientific Investigation, Scientific Administration, Scientific Teaching.

Its courses in home economics prepare high school women

- As capable and refined managers of the home.
- As Teachers of Domestic Science and kindred subjects.
- As Dietetic Administrators.
- As Scientific Investigators.

Access to the State College is easy, 45 minutes from Providence; access to the State College is cheap, 18c. for commuters from Providence.

Residence at the State College is cheap, healthful, helpful—a training in social responsibility and ethics.

Stone Dormitory—East Hall—for men. Modern conditions, neat, sanitary.

Stone Dormitory—Davis Hall—for women. Sanitary and attractive conditions.

Send for information to

RHODE ISLAND STATE COLLEGE

Kingston, R. I.

Is it a Rug or a Piece of Furniture wanted
for your room? You need not go out of
town for a Fine Selection at Low Prices.

Call on **The Sheldon
House Furnishing
Company**

Wakefield

Rhode Island

Grist Calendar—Continued

15. The annual tapping exercises of the Polygon held. Mitchell '13, Irons '13, Browning '14, Davis '14, Esty '14 and Matthews '14 were tapped.
16. Preparation for Inspection.
17. Captain Raymond of U. S. A. inspects Military Department. Sham Battle in afternoon. R. I. wins debate unanimously over M. A. C.
18. R. I. 19, W. P. I. 4. 1915 15, E. G. A. 9, at East Greenwich, R. I.
20. First of interfraternity series. Theta Chi 11, Delta Alpha Psi 6.
21. Beta Phi 13. Gamma Delta Sigma 11.
22. "Prexy" gives one of his familiar talks in Chapel.
- P. I. K.* 14, Delta Alpha Psi 3.
- '15 men endeavor to start things but have to return after a worthless walk to 30-acre.
23. Student Council has a public hearing at 4:35 P. M. which results in the accusation of one of the 1915 number breaking Freshman rules.
- Soph Girls entertain eight of the 1914 men at a dinner in the H. E. Laboratory. Mr. F. H. Smith appointed Assistant Prof. in Chem.
24. N. H. Track men arrive.

FRED H. WHITE

ESTABLISHED 1887

Paints

Painters' Supplies

WHOLESALE AND RETAIL

363-365 Main Street

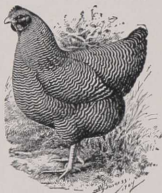
Pawtucket, R. I.

GOOD LOOKING FOWLS



Are more profitable than culls and cost only a trifle more.

Barred Plymouth Rocks have attractive plumage, lay such rich brown shelled eggs and are nice table poultry. We always have



Birds for Sale

Eggs for Hatching

In Season

Visitors are welcome any day except Sunday. Send for Free Book.

LAMBERT'S FARMS

COWESETT ROAD

APRONAUG, R. I.

ALDRICH-ELDREDGE COMPANY

Wholesale Grocers

and Coffee Roasters

Proprietors of North Star Java

Dorrance, Pine and Orange Streets

PROVIDENCE, R. I.

Grist Calendar—Continued

25. R. I. suffers defeat at hands of New Hampshire State 62-51.
27. Beta Phi defeated by *P. I. K.* 4-0. Best game thus far. B. Φ. crippled.
28. Gamma Delta Sigma defeats Delta Alpha Psi 15-2. O'Neil plays r. f.
30. Memorial Day. No recitations.
31. Glee Club gives Minstrel Show at East Greenwich. Grand Success.

June

2. Stock Judging Class under Prof. Putney journey to Glen Farm in Newport. Faculty Clambake at Wesquage Beach.
3. Freshmen Banquet and Bonfire.
4. *P. I. K.* defeats Gamma Delta Sigma 5-1.
5. Theta Chi defeats B. Φ. 15-2.
6. Delta Alpha Psi forfeits game to B. Φ. Glee Club gives Minstrel Show in Lippitt Hall and clears \$75 for Athletic Association.
7. Co-eds Gymnasium Exhibition in Lippitt Hall. Reception to Miss Helen Thompson in Davis Hall.
8. Freshmen fail to play 1914 in baseball.
10. Theta Chi 1, *P. I. K.* 0.

The Athletic Goods

Which we carry are selected from the best factories in the country. Superior materials at moderate prices. Always a large assortment of **Athletic Goods** for all seasons.

Everything is sold under a liberal guarantee.

JOHN F. CASHMAN
Providence

54 Exchange St.
Opposite Banigan Building

Grist Calendar—Continued

11. Dr. F. K. Sechrist resigns Professorship of English and Modern Languages and accepts appointment as Honorary Fellow in Psychology and Education at Clark University.
13. Exams begin.
14. Polygon holds initiation. Social meeting at B. Φ. House.
16. Prexy delivers Baccalaureate address.
18. Kingston Prize Essays read and judged.
19. Interclass meet. Sophomores victorious, 35-24. Class Day Exercises. Faculty Reception in Evening. 1913 Grist out.
20. Commencement Exercises. Annual Business Meeting of Alumni Association. Alumni Baseball Game. Commencement Ball.
21. College closed for Summer.

September

9. Football men report for first practice. Coaches Cobb and Bingham put men through light practice during week.
16. New men arrive. Hard practice for M. A. C. game.
17. Fifteen men report for Practice to Cobb. Meeting of all candidates in Lippitt Hall. Chapel Exercises after which registration takes place. Eighty-seven students register in entering class.
18. Recitations begin. First Student Council meeting. Officers elected.

W. A. FISK, Pres.

G. F. WILLIAMS, Treas.

L. J. WILLIAMS, Sec'y

The W. E. Barrett Company

Manufacturers of and Dealers in

AGRICULTURAL **IMPLEMENTS...**

Wooden Ware Fertilizers Poultry Supplies
Wrapping Paper and Bags

PROVIDENCE

RHODE ISLAND

A. A. GREENMAN

Dealer in

Groceries
Dry Goods
Etc., Etc.

KINGSTON

RHODE ISLAND

If you are a Track Athlete

If you play Base Ball

If you are interested in

Any Outdoor or Indoor Sports —

WHEN YOU NEED A SWEATER

Or anything in the Way of Athletic Equipment,
you can obtain the best that Factories make and
feel that it is absolutely guaranteed, by going to...

JOHN F. CASHMAN

54 Exchange Street, Providence

Grist Calendar—Continued

19. Athletic meeting. Sherwin elected Baseball Manager, Baxter Assistant. Esty elected Recording Secretary and Hawkins Assistant Manager of Track.
20. Football men leave for Amherst.
21. M. A. C. O, R. I. 7. "Sully" gets the touchdown.
23. Polygon meeting.
24. Junior Class meeting. Officers elected.
25. Football squad poses for picture.
26. Freshmen Class meeting. Smoker and Football Revival in Chapel.
27. Y. M. C. A. and Y. W. C. U. hold annual reception in Assembly Hall.
28. R. I. 20, Pawtuxet A. C. O.
30. Coach Cobb puts Varsity through hard drill for Brown game.

October

1. Athletic meeting. Stock Judging Team goes to Brockton to judge.
2. Woonsocket Club elects officers. Rev. E. T. Root speaks in Chapel.
3. Hard scrimmage for Brown game.
4. Stock Judging Team takes second place. "Baldy" is first man.
5. Brown 14, R. I. O.

Purogen
TRADE MARK REGISTERED
THE PERFECT
Antiseptic

Is a non-poisonous antiseptic composed of Boric Acid, Thymol, Menthol, and the non-poisonous Phenols. Its use affords protection against disease-causing germs, as its action inhibits their growth.

For general household use, in **cuts, burns, scalds, sore throat and catarrh**, it has no equal.

It is our Perfect Antineptic and the superior material used in the manufacture of our Tooth Paste, Tooth Powder, Talcum Powder, Cold Cream, Shaving Cream, and Toilet Soap that make them the best on the market.

For sale at all dealers, or by mail. **Small size 25 cents.**

THE WILCOX CO.

Wakefield, R. I.

Grist Calendar—Continued

7. M. A. Hawkins elected Manager of Track and L. A. Whittaker Assistant Manager.
8. Y. M. C. A. election.
9. Rev. S. H. Irwin addresses students at Chapel.
10. Glee Club elects leader and assistant.
11. Football team leaves for Orono, Me.
12. U. of M. 18, R. I. S. C. 0. Dean Academy 22, R. I. 2nds 0.
14. Rifle Club organize and elect officers for year.
15. Freshmen appear strong in football practice.
16. Prof. Putney relates his experiences to students at Chapel Exercise.
18. Informal Dance in Lippitt Hall given by Co-eds.
19. R. I. 6, Fordham U. 0. R. I. 2nds 38, E. G. A. 0.
21. Polygon meeting.
22. First lecture, given by Miss Annie S. Peck, the world famous mountain climber, on "The Conquest of Huascarán."
23. Y. M. C. A. meeting well attended. Brilliant prospects for a lively Y. M. C. A.
24. Glee Club rehearses for first time under leadership of Dr. Jules Jordan.

SMITHFIELD SAVINGS BANK

Greenville, R. I.

ORGANIZED 1872

President—ANDREW B. WHIPPLE
Vice-President—HENRY S. TURNER

Treasurer—NICHOLAS S. WINSOR
Secretary—MARSHALL W. MOWRY

Deposits made on or before the 15th of any month draw interest from the 1st at 4%

Banking Hours, 9 to 3.

Telephone 105-W, Centredale Exchange.

Branch Office, Esmond, R. I.

BOARD OF TRUSTEES

ANDREW B. WHIPPLE
MARSHALL W. MOWRY
STEPHEN H. BROWN

HENRY S. TURNER
ALONZO P. MOWRY
CHARLES P. ALLEN

NICHOLAS S. WINSOR
FRANKLIN S. COLWELL
CHESTER E. WALCOTT

Increased Productivity

receives indifferent attention. **Feed your Land! Farm Intensively! Cultivate Freely!**

A Few Acres, intelligently worked, will bring in greater returns than a huge farm that

Sanderson's Special Formula Fertilizers

have always proved satisfactory. Special fertilizers for special crops.

Use these Fertilizers on your soil this year and note the difference in the quality and size of your crops and after-condition of the land.

SANDERSON FERTILIZER & CHEMICAL COMPANY

New Haven, Conn.

WILLIAM READ & SONS

Athletic.... Outfitters

Base Ball, Football, Basket Ball, Tennis, Track and Hockey Outfits.
Sweaters, Jackets, Jerseys, Athletic Clothing, Shoes
and Gymnasium Supplies.

107 Washington Street
BOSTON

Grist Calendar—Continued

25. Mass meeting in Chapel.
26. Cornerstone laying of Science Hall. R. I. 27, W. P. I. 0.
28. Y. M. C. A. meeting. Prof. Dickinson speaks.
29. Freshmen caps arrive.

November

1. Smoker in Chapel. Sleight of hand performance causes much excitement.
2. R. I. 25, N. H. 0, at Kingston. Concert, Musical and Literary Program:me by Rogers and Greely, by Lecture Association.
3. Straw vote under leadership of Dr. Lambert. No License 93, License 11.
4. Invitations extended to new men to join the Fraternities.
5. Election Day. No recitations. Soph-Fresh Track meet. Soph 68½, Freshmen 46½.
6. Election returns are evidenced everywhere. Rev. S. H. Marsh of Providence speaks in Chapel.
7. Pledge pins are seen on new men.
8. Social Room Reception in the Social Room, East Hall.
9. R. I. 14, Fort Greble 6.

BROWNELL & FIELD COMPANY

Wholesale Grocers

Coffee Roasters...

Importers and Jobbers of Teas and Coffees

119 to 123 Harris Ave., Providence, R. I.

J. C. TUCKER CO.

Narragansett Pier, R. I.

Wakefield, R. I.

Coal

Hardware

Lumber

Kitchen Ware

Building Material

Groceries

Hay and Grain

and Meats

Farming Implements

Garden and Flower Seed

Auto Repairs and Accessories

CHEMICALS



FERTILIZERS

THE WILCOX FERTILIZER COMPANY
"FERTILIZERS THAT FERTILIZE"
MYSTIC, CONN.

Grist Calendar—Continued

11. First call for Basketball candidates. Y. M. C. A. meeting. Soong speaks.
13. Rev. G. W. Manning of Phoenix, R. I., speaks in Chapel.
14. Juniors have first signal practice of season.
15. Juniors scrimmage against Sophs. Varsity goes to New York.
16. N. Y. U. 14, R. I. 7.
18. Dan Kulp of Brown University sets forth the standard for men at Y. M. C. A. meeting.
19. Juniors play Freshmen in preparation for interclass game.
20. Seniors battle against Sophs.
22. Soph Hop. First quarter ends.
23. Sophomore-Freshmen Football game on Athletic Field. Freshmen victorious 6-0.
24. Sophs capture the Freshmen Banner, which was swaying to the breeze, and hot times occur.
25. Polygon and Y. M. C. A. meeting.
27. Thanksgiving recess at 12:00 M. Short Chapel service by Prexy.

You will Find...

a
Very
Complete
Line
of

Stationery
at
the

**Times
Stationery
Store**

**Wakefield
R. I.**

**B. F. BROWN
& SON**

Dealers in

Beef, Pork, Lamb
and
Poultry

also

Vegetables

in their season

KINGSTON, R. I.

Telephone

**RHODE ISLAND
HOSPITAL TRUST COMPANY**

Providence, R. I.

Capital - - \$2,500,000

Surplus and Profits \$2,800,000

Interest paid on Deposits either
subject to Check or in
Participation

**The Oldest Trust Company
in New England**

**THOMAS F. PIERCE
& SON**

**S
H
O
E
S**

and Hosiery

Westminster & Dorrance Sts.

PROVIDENCE, R. I.

For your Inspection

A choice line of Fine Serges, Fancy Worsteds, Suitings and Overcoatings, Fine Worsted Dress Goods and Broadcloth, Double Face Cloth, White Serges, Steamer Rugs : : : :

Made to Measure

Department for New Suits and Overcoats

GEORGE E. HELLIWELL

Wakefield, R. I.

Grist Calendar—Continued

December

1. All return with high expectations after reports are issued.
2. Basketball schedule announced.
3. Prexy relates trip at Atlanta.
5. Lecture by Lincoln Wirt on "The Conquest of the Arctic", in Chapel.
6. First engagement of Glee Club at Wickford.
7. Fat men play Aggies a game of basketball. Aggies unmercifully score on "Fat" men. Y. M. C. A. Conference at Brown University of all associations in Rhode Island and Massachusetts.
9. Gamma Delta Sigma entertains Polygon in Room 2.
10. Annual meeting of Athletic Association. Election of Officers. Guard duty held after meeting.
11. Rev. Diefenbach delivers address on "The Ministry of Human Sympathy" in Chapel. Battalion pictures taken.
12. Rifle Team starts practice.

The Old Reliable

●●●●●●●●●● **Poultry Foods**

Meat Scraps
Bone and Meat Meal
Cracked Chicken Bone
Bone Meal
Clean and Pure

Manufactured by

**THE PAWTUCKET
RENDERING CO.**

Pawtucket, R. I.

B. E. HELME

**Dry Goods and
Groceries**

**Fine
Confectionery**

Kingston, R. I.

PRESTON & ROUNDS

Booksellers

and **Stationers**

98

Westminster
Street

Providence
R. I.

The College Hof-Brau

South Basement

East Hall

Is where you find the men between bells



Food
for the Inner—
Haberdashery
for the Outer—
man

W. I. MAIN

JEWELER

Dealer in

Watches

Clocks and

Jewelry

— Fine —

Watch, Clock and Jewelry Repairing

Clark Block

Wakefield

H. MIDWOOD'S
SONS CO.

Providence, R. I.

Wholesale
Grocers

Agents for

Ceresota Flour

Hunt's Canned Fruits

Granite State Beverages

Rockwood's Chocolates

Orphan Boy Canned Goods

Grist Calendar—Continued

13. Glee Club gives best concert at East Greenwich, R. I.
14. *P. I. K.* initiation. R. I. 29, R. P. I. 11.
16. Gen. Sec. Newell of Brown University Christian Association speaks at Y. M. C. A. meeting along deputational lines.
17. Continuation of annual athletic meeting.
18. Judge G. Bliss, an old veteran of Civil War, addresses men at Chapel with scattering reminiscenses of war time.
19. Top-floor basketball men of *P. I. K.* give initiates a bad rubbing.
20. Departure for Christmas Vacation.

January

2. Poultry course starts. Twenty-four register for course.
4. Team off for Pratt Institute. Delta Alpha Psi hold initiation.
5. Team returns with a victory. R. I. 35, Pratt 31.
6. Report of Conference at Brown given by delegates at Y. M. C. A. meeting.
7. "Bill" Redding has to eat in the dining hall per order of L. C. T.
8. Officers elected by Poultry Course.

Come in and let us show you
how we can save you from \$5
to \$15 on a Suit of Clothes

**Nothing but Peace Dale
Fabrics handled by us....
Fabrics backed by a rep-
utation 110 years old**

**Peace Dale
Co-operative Stores**

Agents for
Wanamaker & Brown
Custom Tailors

Intercollegiate Bureau of Academic Costume



COTRELL & LEONRAD

Albany, N. Y.

Caps - Gowns - Hoods

RELIABLE SERVICE

Bulletins and Samples on Request

Makers to American Colleges and Universities from
the Atlantic to the Pacific

EIMER & AMEND

Headquarters for

CHEMICALS

Chemical Apparatus, Minerals, etc.

We carry the Largest Stock of Laboratory Supplies
in the United States--First Quality Only

PROMPT SERVICE

ALL SCIENTIFIC APPARATUS

EST'D - 1851
203-211 - THIRD-AVE
NEW-YORK-CITY

NATIONAL EXCHANGE BANK

Greenville, R. I.

Organized 1822

CAPITAL - \$150,000

SURPLUS AND UNDIVIDED PROFITS, OVER \$60,000

President	- - - -	A. P. Mowry
Vice-President	- - - -	A. J. Mowry
Cashier	- - - -	N. S. Winsor

DIRECTORS

A. P. Mowry
A. J. Mowry
Simeon Sweet

W. A. Read

H. S. Turner
S. C. Irons
D. A. Smith

S. H. Mowry

S. H. Clemence
C. E. Walcott
N. S. Winsor

Banking Hours, 9 to 3.

Telephone 105-W, Centredale Exchange.

Grist Calendar—Continued

9. Freshmen elect Henry Manager of Class Basketball Team.
10. S. K. H. S. 22, 1915 19.
11. Wesleyan 56, R. I. 23. B Φ Initiation and Banquet. Theta Chi Initiation and Banquet.
13. Dr. Lambert addresses Y. M. C. A.
15. Mr. Harold Madison discusses art of exhibiting in Chapel. Compulsory Chapel attendance is decided by Faculty.
16. Y. M. C. A. social workers make initial trip to Guild, Peace dale, and organize classes in English.
17. Y. M. C. A. and Y. W. C. U. give a reception to the Poultry students.
18. R. I. 13, Williams 54. Rifle Team loses to Harvard.
20. Rev. S. L. Knowles of Bridgewater, Mass., addresses Y. M. C. A.
22. Judge Zenas Bliss speaks on Taxation in Chapel. Athletic Association meeting to finish up business of annual meeting. Y. M. C. A. men at Guild.
23. Mr. C. H. McMaster of Youngstown, Ohio, lectures on Fire-Proofing and Construction. Y. M. C. A. men at Guild.
24. Annual Military Ball in Lippitt Hall proves grand success.
25. R. I. 27, Yale Rovers 23.

Industrial Trust Co.

49 Westminster St.

Providence, R. I.

LARGEST BANK IN RHODE ISLAND

CAPITAL	\$3,000,000
SURPLUS	\$3,000,000

OFFICERS

SAMUEL P. COLT	Chairman of the Board
H. MARTIN BROWN	President
JOSHUA M. ADDEMAN	Vice President
JAMES M. SCOTT	Vice President
CHARLES G. HARRINGTON	Vice President
FRANK C. NICHOLS	Vice President
WARD E. SMITH	Treasurer
H. HOWARD PEPPER	Trust Officer & Asst. Treas.
HENRY B. CONGDON	Secretary
E. EUGENE CHESEBRO	Asst. Secretary
ELMER F. SEABURY	Auditor

NEW ACCOUNTS INVITED

A. E. WILCOX

Livery

Boarding

Sale and

Exchange

STABLE

Phone Orders for Automobiles Promptly Attended to

TEAMS AT ALL TRAINS

West Kingston, R. I.

EASTERBROOKS & GETCHELL

HATTERS AND FURNISHERS

279

MAIN STREET

PAWTUCKET R. I.

ESTABLISHED 1884

SIMON WRESCHINSKY MERCHANT TAILOR

CLEANING

PRESSING and

... REPAIRING

SUITS TO ORDER

Wakefield, R. I.

NEW YORK

BOSTON

WRIGHT & DITSON

Leading Dealers in

Athletic Goods

Tennis, Golf, Base Ball, Foot Ball, Basket Ball and Track Outfits
Sweaters, Jerseys, Shoes, etc.

Special Attention given to
Outfitting College and School Teams

82 Weybosset St.
Providence, R. I.

HARRY WEBB
"College Agent"

CHICAGO

SAN FRANCISCO

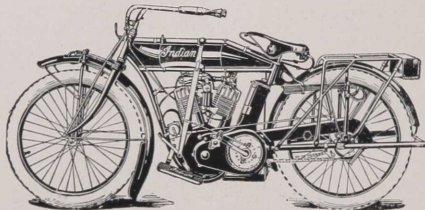
Grist Calendar—Continued

27. Mr. E. C. Mercer arrives on Campus for a three days' visit with the students.
29. Mr. Byron Piatt delivers lecture on "The Mass Against the Man" Mr. Mercer gives final address to students and faculty at Chapel.
31. Exams begin.

February

1. R. I. Glee Club gives concert at Valley Falls, R. I.
2. Candlemas Day. Fair and Bright.
3. Snow.
4. First term ends. Vacation. Au Revoir.
10. Second semester begins.
- 11, 12, 13. Poultry exhibition at Chickenville.
14. Valentine's Day. Big mail arrives at office. Faculty 28, Sophomores 9.
15. N. H. 40, R. I. 28.


ARCHIE BROWN



INDIAN MOTORCYCLE AGENCY

Bicycle and Motorcycle Repairing and Supplies
Robinson Street, Wakefield, R. I.

Ground Limestone

**For
Soil 
Improvements**

87% Combined Carbonates
Guaranteed

Splendid Results already Obtained
from its Use

ORDER EARLY

STEARNS LIME CO.
Danbury, Conn.

Jewelry
Silver
Watches
Stationery
Art Goods
Pictures
Oriental Rugs



Tilden-Thurber
Providence

BERT C. HORTON



High Class Photographic Artist

Boston Store Annex

Elevator Telephone

Photographer to Rhode Island State College

239 Westminster St., Providence, R. I.

Grist Calendar—Continued

17. Mr. Andrews, Secretary of Newport Y. M. C. A. in Navy and Army Departments, addresses men at Y. M. C. A. meeting. Lieut. Cupid attempts to march Co. C through the north gym wall.

18. "Chubby" Premo cuts Lorenzo Well's hair.

19. Dr. Boardman speaks on "Reminiscences from an Old Mirror." Last number of lecture course greatly appreciated. Parker's Imperials entertain.

20. Final tryouts of Relay Team for meet with M. A. C.

21. Cohen gives each Senior a present. (Bill for Class dues.)

22. Washington's Birthday. M. A. C. just noses out R. I. in a fast and close relay at Armory, Providence. Sophs win from Freshies in close contest up to last, 18-12.

24. Horton takes photos of all teams and organizations.

25. 1915 Grist Editor-in-Chief and Manager elected.

26. Glee Club gives concert in Memorial Hall, Peacedale.

27. Glee Club entertains at Westerly.

28. Mass meeting about taxes.

WAKEFIELD TRUST COMPANY

WAKEFIELD, R. I.

Capital, \$100,000

Surplus and Profits, over \$50,000

Branch at Narragansett Pier

Open Entire Year

Safe deposit boxes to rent; Issues drafts payable in all Foreign Countries; Solicits deposits; Pays interest Feb. 15th and Aug. 15th at rate of 4% per annum on Participation Account.

For strength compare the percentage of our capital and surplus to deposits with any other like institution in this State.

BENJ. F. ROBINSON, Pres.
JOHN E. BABCOCK, Treas.
GEO. A. KROENER, Ass't Treas.

DIRECTORS

John Babcock
Benj. F. Robinson
John E. Babcock

Benj. W. Palmer
Dr. R. R. Robinson
Wm. G. Gould

John A. Allen
Rowland Hazard
W. A. Nye.

Narragansett Milling Company

Shippers and Millers
of Grain

East Providence, R. I.

EVERY STUDENT, Alumnus, Faculty-Member, and every person who has ever heard of Rhode Island should subscribe for the livliest thing at Rhode Island.

The Beacon \$1.50 per Year
Newsy Clean-Cut Up-to-Date

H. E. DAVIS, Mgr.

CHARLES S. BUSH CO.

Photo Supplies

Artists' Materials Lab. Supplies
212-216 Weybosset St.
Providence, R. I.

O. E. STEDMAN

-Dentist-

Wakefield, Rhode Island

ORRIN E. JONES

Storage Warehouses

For Fine Household Effects, Pianos, etc.
Packing, Crating, Shipping and Transferring
— OFFICES —
936 Westminster St. and 59 Central St.
Providence, R. I.

DR. FITZGERALD

The Dentist

Pawtucket, Rhode Island

KILLAM & CO.

Manufacturers of

Clocks and Clock Movements

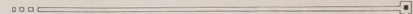
Special Parts made to Order.
Reproductions of Willard, Banjo and Mantel
Clocks.
Pawtucket, R. I.

L. W. TUCKER

Machinist and General Repair Man

Bicycle Repairing and Supplies

Robinson Street, opposite Depot
Wakefield, R. I.



THE ELECTRIC CITY ENGRAVING Co.
BUFFALO, N.Y.

WE MADE THE ENGRAVINGS FOR THIS BOOK.



The Electric City Engineering Co.
New York

